



Elm Road, Mannamead Plymouth PL4 7BA

welcome to

Elm Road, Mannamead Plymouth

POTENTIAL TO IMPROVE IN MANNAMEAD! A fantastic opportunity to acquire this THREE BEDROOM mid terrace property arranged over THREE FLOORS with great scope to remodel and improve, for sale with NO ONWARD CHAIN! Perfect for first time buyers or investors looking for a project! Call to view today!



Lounge

11' 8" x 11' 8" (3.56m x 3.56m)

Front facing upvc double glazed window, radiator, picture rail, feature fireplace.

Dining Room

13' 1" x 10' 4" (3.99m x 3.15m)

Rear facing upvc double glazed window, radiator, picture rail, feature fireplace, built in storage cupboard.

Kitchen

9' 8" x 7' 2" (2.95m x 2.18m)

Rear facing upvc double glazed window, fitted kitchen, matching wall and base units, work surface, tiling, gas hob with oven below, stainless steel drainer sink. radiator, space and plumbing for a washing machine, space for a fridge freezer, radiator.

Reception Room/basement

25' 2" x 14' 4" (7.67m x 4.37m)

Rear facing upvc double glazed window and door, radiator, gas central heating boiler.

Bedroom One

12' 4" x 9' 8" (3.76m x 2.95m)

Front facing upvc double glazed window, radiator, picture rail, feature fireplace.

Bedroom Two

13' 1" x 11' 8" (3.99m x 3.56m)

Rear facing upvc double glazed window, radiator, picture rail.

Bedroom Three

8' 5" x 6' 5" (2.57m x 1.96m)

Front facing upvc double glazed window, radiator, picture rail.

Family Bathroom

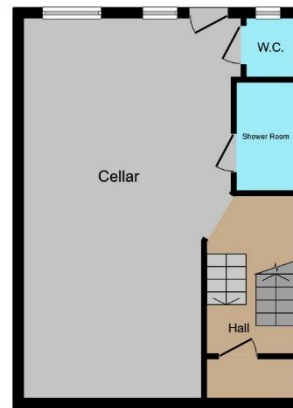
Rear facing upvc double glazed window, bath with shower over, low level WC, wash hand basin, tiling, radiator.

Cloakroom/wc

Low level wc, wash hand basin, tiling.

Shower Room

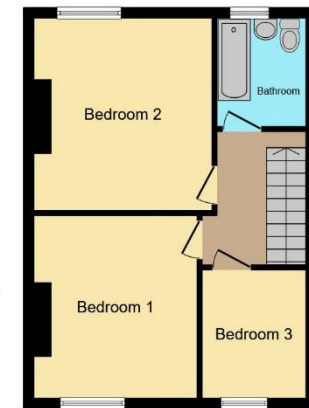
Shower cubicle, tiling.



Lower Ground Floor



Ground Floor



First Floor

Total floor area 128.3 sq.m. (1,381 sq.ft.) approx

This floorplan is for illustrative purposes only and is not drawn to scale. Measurements, floor-areas, openings and orientations are approximate. They should not be relied upon for any purpose and do not form any part of an agreement. No liability is taken for any error or mis-statement. All parties must rely on their own inspections.



view this property online fox-and-sons.co.uk/Property/MUP107586



welcome to

Elm Road, Mannamead Plymouth

- Mid terrace house in need of modernisation
- Arranged over three floors with scope to remodel
- Three bedrooms and a family bathroom
- Three large reception rooms and a kitchen
- NO ONWARD CHAIN

Tenure: Freehold EPC Rating: C

offers in the region of

£190,000



Please note the marker reflects the postcode not the actual property

view this property online fox-and-sons.co.uk/Property/MUP107586



Property Ref:
MUP107586 - 0009

1. MONEY LAUNDERING REGULATIONS Intending purchasers will be asked to produce identification documentation at a later stage and we would ask for your co-operation in order that there is no delay in agreeing the sale. 2. These particulars do not constitute part or all of an offer or contract. 3. The measurements indicated are supplied for guidance only and as such must be considered incorrect. Potential buyers are advised to recheck measurements before committing to any expense. 4. We have not tested any apparatus, equipment, fixtures or services and it is in the buyers interest to check the working condition of any appliances. 5. Where an EPC, or a Home Report (Scotland only) is held for this property, it is available for inspection at the branch by appointment. If you require a printed version of a Home Report, you will need to pay a reasonable production charge reflecting printing and other costs. 6. We are not able to offer an opinion either written or verbal on the content of these reports and this must be obtained from your legal representative. 7. Whilst we take care in preparing these reports, a buyer should ensure that his/her legal representative confirms as soon as possible all matters relating to title including the extent and boundaries of the property and other important matters before exchange of contracts.

Fox & Sons is a trading name of Sequence (UK) Limited which is registered in England and Wales under company number 4268443, Registered Office is Cumbria House, 16-20 Hockliffe Street, Leighton Buzzard, Bedfordshire, LU7 1GN. VAT Registration Number is 500 2481 05.


fox & sons



01752 662777



MutleyPlain@fox-and-sons.co.uk



28 Mannamead Road, Mutley Plain,
PLYMOUTH, Devon, PL4 7AA



fox-and-sons.co.uk