



Ashford Crescent, Mannamead, Plymouth PL3 5AB

welcome to

Ashford Crescent, Mannamead, Plymouth

GUIDE PRICE: £400,000 - £425,000. Located in Mannamead is this beautifully presented, four bedroom detached family home. With two/three reception rooms, a generous corner plot garden including a unique outbuilding, and a double garage and driveway it's a fantastic purchase.



Front Porch

Kitchen/diner

21' 6" x 13' 7" (6.55m x 4.14m)

Front side and rear facing upvc double glazed windows, rear facing upvc double glazed door, fitted kitchen, matching wall and base units, work surface, tiling, built in double oven, induction hob with cooker hood above, space and plumbing for a washing machine and tumble dryer, radiator, space for American fridge freezer, space for a dining table.

Cloakroom/wc

Living Room

21' 6" x 17' (6.55m x 5.18m)

Front facing upvc double glazed french doors, front and side facing upvc double glazed windows, radiator, TV point.

Reception Room/bedroom Five

17' x 7' 8" (5.18m x 2.34m)

Side facing upvc double glazed window, radiator.

Bedroom One

15' 9" x 10' 3" (4.80m x 3.12m)

Front facing upvc double glazed window, radiator.

En-Suite

Shower cubicle, low level WC, wash hand basin, radiator, extractor fan.

Bedroom Two

14' 4" x 10' 3" (4.37m x 3.12m)

Front and side facing upvc double glazed window, radiator.

Bedroom Three

11' 7" x 9' 5" (3.53m x 2.87m)

Rear facing upvc double glazed window, radiator.

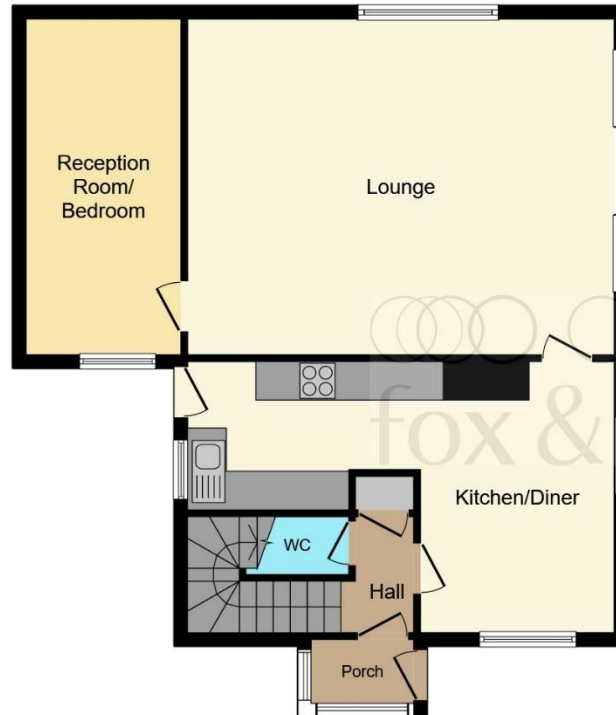
Bedroom Four

7' 9" x 7' 7" (2.36m x 2.31m)

Rear facing upvc double glazed window, radiator.

Bathroom

Two rear facing upvc double glazed windows, bath with mixer taps, shower cubicle, low level WC, wash hand basin, radiator, tiling.



Ground Floor



First Floor

Total floor area 140.1 sq.m. (1,508 sq.ft.) approx

This floorplan is for illustrative purposes only and is not drawn to scale. Measurements, floor-areas, openings and orientations are approximate. They should not be relied upon for any purpose and do not form any part of an agreement. No liability is taken for any error or mis-statement. All parties must rely on their own inspections.



view this property online fox-and-sons.co.uk/Property/MUP105537



welcome to

Ashford Crescent, Mannamead, Plymouth

- Detached family home in Mannamead
- Four/five bedrooms, three doubles
- Bathroom, downstairs WC and master en-suite
- Double garage and double driveway for parking
- Large corner plot with outbuilding and a summer house

Tenure: Freehold EPC Rating: C

guide price

£400,000



view this property online fox-and-sons.co.uk/Property/MUP105537

Please note the marker reflects the postcode not the actual property



Property Ref:
MUP105537 - 0012

1. MONEY LAUNDERING REGULATIONS Intending purchasers will be asked to produce identification documentation at a later stage and we would ask for your co-operation in order that there is no delay in agreeing the sale. 2. These particulars do not constitute part or all of an offer or contract. 3. The measurements indicated are supplied for guidance only and as such must be considered incorrect. Potential buyers are advised to recheck measurements before committing to any expense. 4. We have not tested any apparatus, equipment, fixtures or services and it is in the buyers interest to check the working condition of any appliances. 5. Where an EPC, or a Home Report (Scotland only) is held for this property, it is available for inspection at the branch by appointment. If you require a printed version of a Home Report, you will need to pay a reasonable production charge reflecting printing and other costs. 6. We are not able to offer an opinion either written or verbal on the content of these reports and this must be obtained from your legal representative. 7. Whilst we take care in preparing these reports, a buyer should ensure that his/her legal representative confirms as soon as possible all matters relating to title including the extent and boundaries of the property and other important matters before exchange of contracts.

Fox & Sons is a trading name of Sequence (UK) Limited which is registered in England and Wales under company number 4268443, Registered Office is Cumbria House, 16-20 Hockliffe Street, Leighton Buzzard, Bedfordshire, LU7 1GN. VAT Registration Number is 500 2481 05.


fox & sons



01752 662777



MutleyPlain@fox-and-sons.co.uk



28 Mannamead Road, Mutley Plain,
PLYMOUTH, Devon, PL4 7AA



fox-and-sons.co.uk