



Caroline Place, Millbay, Plymouth PL1 3PS

welcome to

Caroline Place, Millbay, Plymouth

CHARMING CAROLINE PLACE PROPERTY!! A unique SELF CONTAINED MAISONETTE in a fantastic waterside location with NO ONWARD CHAIN! Boasting a beautiful communal garden and PRIVATE GARDEN SPACE, it must be viewed to be fully appreciated! Call Fox & Son's to view TODAY



Living Room

15' 7" x 8' 5" (4.75m x 2.57m)

two rear facing upvc double glazed windows, radiator.

Kitchen

11' 8" x 8' 5" (3.56m x 2.57m)

two rear facing upvc double glazed windows, fitted kitchen, matching base units, work surface, stainless steel drainer sink, electric oven and hob, space and plumbing for a washing machine.

Bedroom One

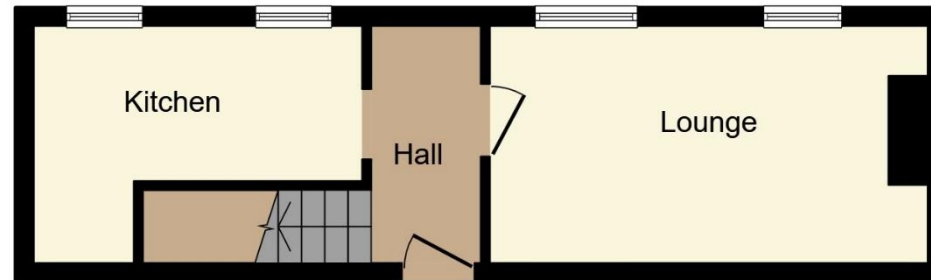
15' x 8' 5" (4.57m x 2.57m)

two rear facing upvc double glazed windows, radiator.

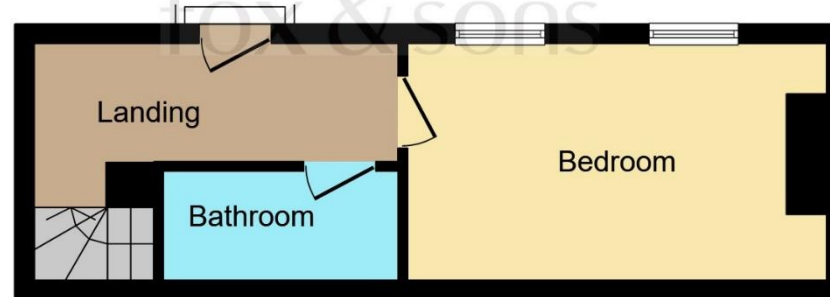
Bathroom

bath with mixer taps and shower attachment over, low level wc, wash hand basin, extractor fan.

Private Garden Area
Communal Garden Area



Ground Floor



First Floor

Total floor area 48.1 sq.m. (517 sq.ft.) approx

This floorplan is for illustrative purposes only and is not drawn to scale. Measurements, floor-areas, openings and orientations are approximate. They should not be relied upon for any purpose and do not form any part of an agreement. No liability is taken for any error or mis-statement. All parties must rely on their own inspections.



view this property online fox-and-sons.co.uk/Property/MUP106566



welcome to

Caroline Place, Millbay, Plymouth

- Self contained one double bedroom maisonette
- Fantastic waterside location by Millbay Marina
- Private garden space and communal garden
- NO ONWARD CHAIN
- Gas central heating and upvc double glazing

Tenure: Leasehold EPC Rating: E

offers over

£110,000



Please note the marker reflects the postcode not the actual property

view this property online fox-and-sons.co.uk/Property/MUP106566

This is a Leasehold property. We are awaiting further details about the Term of the lease. For further information please contact the branch. Please note additional fees could be incurred for items such as Leasehold packs.



Property Ref:
MUP106566 - 0019

1. MONEY LAUNDERING REGULATIONS Intending purchasers will be asked to produce identification documentation at a later stage and we would ask for your co-operation in order that there is no delay in agreeing the sale. 2. These particulars do not constitute part or all of an offer or contract. 3. The measurements indicated are supplied for guidance only and as such must be considered incorrect. Potential buyers are advised to recheck measurements before committing to any expense. 4. We have not tested any apparatus, equipment, fixtures or services and it is in the buyers interest to check the working condition of any appliances. 5. Where an EPC, or a Home Report (Scotland only) is held for this property, it is available for inspection at the branch by appointment. If you require a printed version of a Home Report, you will need to pay a reasonable production charge reflecting printing and other costs. 6. We are not able to offer an opinion either written or verbal on the content of these reports and this must be obtained from your legal representative. 7. Whilst we take care in preparing these reports, a buyer should ensure that his/her legal representative confirms as soon as possible all matters relating to title including the extent and boundaries of the property and other important matters before exchange of contracts.

Fox & Sons is a trading name of Sequence (UK) Limited which is registered in England and Wales under company number 4268443, Registered Office is Cumbria House, 16-20 Hockliffe Street, Leighton Buzzard, Bedfordshire, LU7 1GN. VAT Registration Number is 500 2481 05.


fox & sons



01752 662777



MutleyPlain@fox-and-sons.co.uk



28 Mannamead Road, Mutley Plain,
PLYMOUTH, Devon, PL4 7AA



fox-and-sons.co.uk