



Hillview Road, Minehead TA24 8EE

welcome to

17 Hillview Road, Minehead

Enjoying wonderful views to the front and rear is this spacious Three bedroom semi detached 1930's home presented in excellent order with light and spacious living accommodation, the property stands in large gardens with Southerly aspect and offers great scope for further extension if desired.



Entrance Porch

Canopied porch, courtesy light point, double glazed door to

Entrance Hall

Stairs to first floor landing, useful understairs storage cupboard, wood effect flooring, radiator, doors to

Sitting Room

14' 5" max x 11' 7" (4.39m max x 3.53m)
Double glazed bay window to front with attractive views to North Hill, feature fireplace with inset log burner, TV aerial point, radiator.

Kitchen/ Dining Room

20' 9" x 11' 5" (6.32m x 3.48m)
Enjoying lovely views over town and towards countryside.

Kitchen Area- Attractively re-fitted range of wall and base level units with Granite effect worktop surfaces, inset single drainer sink unit, appliance space for slot in cooker, appliance space for fridge and freezer, tiled splashbacks and tile floor, open plan to

Dining Area with double glazed sliding doors opening onto timer balcony, continuation of tiled floor, feature fireplace and radiator.

Cloakroom

Double glazed window to side, white suite comprising low level WC and wash hand basin, tiled floor.

First Floor Landing

Double glazed window to side, access to loft space, doors to;

Bedroom One

10' 8" x 9' 10" (3.25m x 3.00m)
Double glazed window to front with attractive views towards North Hill, wall to wall fitted wardrobes, radiator.

Bedroom Two

11' x 9' 7" (3.35m x 2.92m)
Double glazed window to rear with attractive views over Minehead, wall to wall fitted wardrobes, radiator.

Bedroom Three

8' 4" x 7' 6" (2.54m x 2.29m)
Double glazed window to rear, radiator.

Bathroom

Double glazed window to front, attractive period style white suite comprising panel enclosed bath with shower over, low level WC and pedestal wash hand basin, tiled surrounds, vinyl floor, radiator.

Garage

21' 11" x 8' 1" (6.68m x 2.46m)
Attached garage with metal double doors to front, power and light, utility area with fitted units and sink unit, wall mounted Gas boiler for central heating and hot water.

W.C.

Gardeners WC with white low level suite.

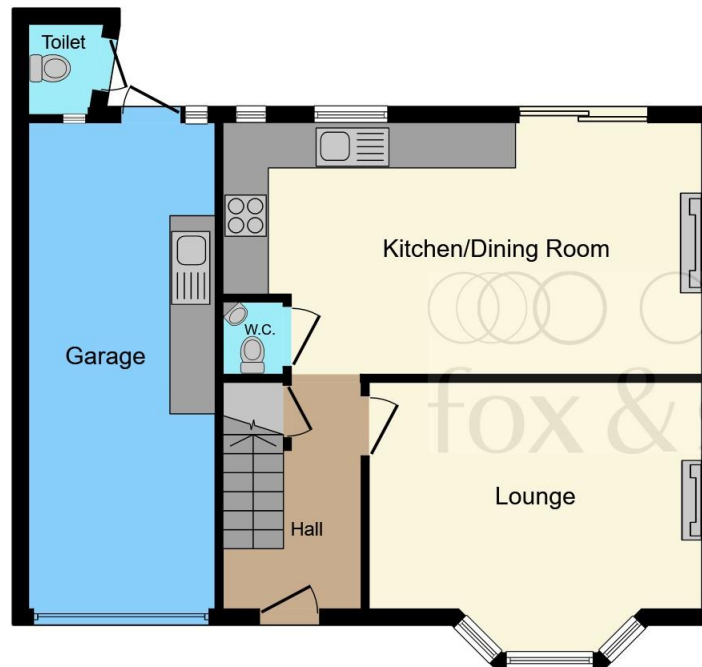
Front Garden

With walled boundaries to the front and side, driveway to garage affording off street parking, attractively planted flower beds and borders.

Rear Garden

The rear garden is a feature of the property enjoying southerly aspect with decked terrace to the rear of the property enjoying wonderful views and ideal for al-fresco dining, steps lead down to a generous expanse of lawned gardens with flower borders, rockery, two patio areas, access through a timber pergola leads to a further area of garden, again laid to lawn with flower borders, inset tree's, and two timber garden stores. Beyond the rear garden is an access lane which could afford access to a further garage or outbuilding if desired.

Council Tax Band C



Ground Floor



First Floor



view this property online fox-and-sons.co.uk/Property/MIH106696



welcome to

17 Hillview Road, Minehead

- Spacious & Beautifully Presented 1930's Semi-Detached
- Sitting Room With Woodburner - Re-Fitted Kitchen/Dining Room
- Cloakroom - Three Bedrooms - Bathroom
- Large Gardens - Garage & Driveway - Extension Potential
- Double Glazing - Gas Central Heating - Viewing Advised

Tenure: Freehold EPC Rating: E

£340,000



Please note the marker reflects the postcode not the actual property

view this property online fox-and-sons.co.uk/Property/MIH106696



Property Ref:
MIH106696 - 0004

1. MONEY LAUNDERING REGULATIONS Intending purchasers will be asked to produce identification documentation at a later stage and we would ask for your co-operation in order that there is no delay in agreeing the sale. 2. These particulars do not constitute part or all of an offer or contract. 3. The measurements indicated are supplied for guidance only and as such must be considered incorrect. Potential buyers are advised to recheck measurements before committing to any expense. 4. We have not tested any apparatus, equipment, fixtures or services and it is in the buyers interest to check the working condition of any appliances. 5. Where an EPC, or a Home Report (Scotland only) is held for this property, it is available for inspection at the branch by appointment. If you require a printed version of a Home Report, you will need to pay a reasonable production charge reflecting printing and other costs. 6. We are not able to offer an opinion either written or verbal on the content of these reports and this must be obtained from your legal representative. 7. Whilst we take care in preparing these reports, a buyer should ensure that his/her legal representative confirms as soon as possible all matters relating to title including the extent and boundaries of the property and other important matters before exchange of contracts.


fox & sons



01643 702281



minehead@fox-and-sons.co.uk



13 The Parade, MINEHEAD, Somerset, TA24 5NL



fox-and-sons.co.uk