



Whitegate Road, Minehead, TA24 5SS

welcome to

Chedworth, Whitegate Road, Minehead

Situated within a popular residential area on the outskirts of Minehead town centre is this beautifully presented semi-detached neo-georgian style family home. The property has been modernised by the current owners & benefits from gas central heating, double glazing, garage & gardens.



Double Glazed Front Door

Leading to

Entrance Hall

With wood style flooring, radiator, staircase rising to first floor landing, doors to

Cloakroom

With extractor unit, low level WC, wash hand basin, tiled floor.

Lounge

13' 1" x 13' 5" (3.99m x 4.09m)

Double glazed bay window to front, wood style floor, fitted shelving, telephone point, radiator, TV point, feature fireplace, built in understairs cupboard, open plan to

Kitchen/ Dining Room

17' 9" max x 12' 1" (5.41m max x 3.68m)

Double glazed window to rear, radiator, wooden style floor, door to cloakroom.

Kitchen Area

A range of modern fitted coloured base units, Quartz worktop surfaces, inset sink unit with mixer tap, integrated electric oven, inset induction hob with cooker hood over, space for fridge freezer, tiled splashbacks, wooden style floor, inset ceiling spotlights, double glazed window to rear and double glazed door to

Utility

9' 2" x 6' 3" (2.79m x 1.91m)

Double glazed windows to rear and side, double glazed door to rear garden, tiled floor, power and light.

First Floor Landing

Double glazed window to side, fitted carpet, access to roof space, built in airing cupboard with Baxi gas fired boiler serving the domestic hot water and central heating systems and shelving, doors to

Bedroom One

17' 10" max x 9' 5" max (5.44m max x 2.87m max)

Double glazed windows to front, fitted carpet, radiator, built in cupboard.



Bedroom Two

10' 3" x 7' 4" (3.12m x 2.24m)

Double glazed window to rear, fitted carpet, radiator.

Bedroom Three

9' 3" x 7' 2" (2.82m x 2.18m)

Double glazed window to rear, radiator, fitted carpet.

Shower Room

A modern fitted suite comprising walkin shower with shower unit and rainwater shower head, vanity wash hand basin with mixer tap and cupboard under, low level WC, tiled surrounds, heated towel rail, tiled floor, extractor unit, inset ceiling spotlights.

Outside

To the front is a lawned garden with driveway to the side offering off street parking and access to garage and front door. To the right of the driveway there is an area of garden which comprises of shrub and a small area to side of garage.

To the rear is an enclosed tiered garden comprising patio area immediately off the rear of the property, steps then

lead up through the garden with areas of grass and a further patio area to the top of the garden where a gate gives access to Cherfield. The garden is bordered by fencing.

Garage

24' 11" x 15' 5" max (7.59m x 4.70m max)

With electric up and over door, double glazed window to rear, door to garden, light and power, space and plumbing for washing machine.

Location

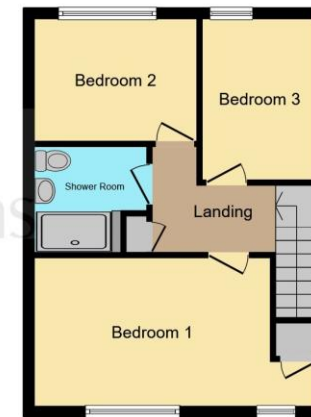
The property is situated within the pretty coastal resort of Minehead, known as the gateway to Exmoor and the start of The South West Coast Path. Minehead offers a good range of day to day amenities, a hospital and schools for all ages including a sixth form college. The rolling hills of Exmoor, Quantock Hills and Brendon Hills are all within easy motoring distance as are the sandy beaches at Blue Anchor. The county town of Taunton is some 24 miles to the south and offers a further range of high street shops, public and state schools and great access links to both the M5 and A303. A direct train link to London Paddington is available from Taunton station in approximately two hours.

Council Tax Band

D



Ground Floor



First Floor

Total floor area 124.1 m² (1,336 sq.ft.) approx

This floorplan is for illustrative purposes only and is not drawn to scale. Measurements, floor-areas, openings and orientations are approximate. They should not be relied upon for any purpose and do not form any part of an agreement. No liability is taken for any error or mis-statement. All parties must rely on their own inspections.

view this property online fox-and-sons.co.uk/Property/MIH106599

welcome to

Chedworth, Whitegate Road, Minehead

- Popular Residential Area
- Neo-Georgian Style Semi-Detached Family Home
- Three Bedrooms - Open Plan Lounge/Dining Room
- Modern Fitted Kitchen & Bathroom
- Garage & Off Street Parking - Front & Rear Gardens

Tenure: Freehold EPC Rating: C

£330,000



view this property online fox-and-sons.co.uk/Property/MIH106599

Please note the marker reflects the postcode not the actual property



Property Ref:
MIH106599 - 0002

1. MONEY LAUNDERING REGULATIONS Intending purchasers will be asked to produce identification documentation at a later stage and we would ask for your co-operation in order that there is no delay in agreeing the sale. 2. These particulars do not constitute part or all of an offer or contract. 3. The measurements indicated are supplied for guidance only and as such must be considered incorrect. Potential buyers are advised to recheck measurements before committing to any expense. 4. We have not tested any apparatus, equipment, fixtures or services and it is in the buyers interest to check the working condition of any appliances. 5. Where an EPC, or a Home Report (Scotland only) is held for this property, it is available for inspection at the branch by appointment. If you require a printed version of a Home Report, you will need to pay a reasonable production charge reflecting printing and other costs. 6. We are not able to offer an opinion either written or verbal on the content of these reports and this must be obtained from your legal representative. 7. Whilst we take care in preparing these reports, a buyer should ensure that his/her legal representative confirms as soon as possible all matters relating to title including the extent and boundaries of the property and other important matters before exchange of contracts.

Fox & Sons is a trading name of Sequence (UK) Limited which is registered in England and Wales under company number 4268443, Registered Office is Cumbria House, 16-20 Hockliffe Street, Leighton Buzzard, Bedfordshire, LU7 1GN. VAT Registration Number is 500 2481 05.


fox & sons



01643 702281



minehead@fox-and-sons.co.uk



13 The Parade, MINEHEAD, Somerset, TA24 5NL



fox-and-sons.co.uk