



**Maple Avenue, Crowle Scunthorpe DN17 4ED**

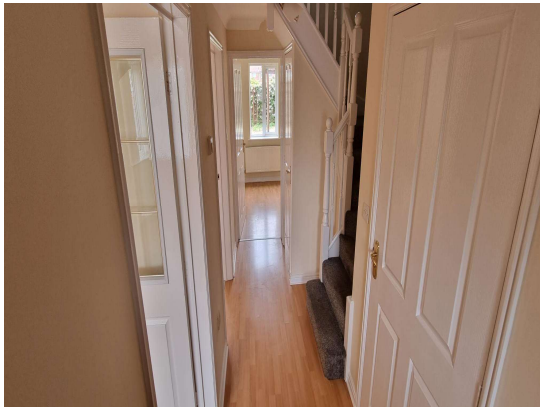




**welcome to**

**Maple Avenue, Crowle Scunthorpe**

Beautiful and remarkable four bedroom detached family home in desirable location! This home has access to a variety of amenities and transport links. This home briefly comprises; entrance hall, cloakroom/downstairs WC, lounge, kitchen/diner, dining room, four bedrooms and bathroom.



### **Entrance Hall**

Having a double glazed door to the front, under stairs cupboard, radiator, laminate flooring, alarm system and coving to the ceiling.

### **Cloakroom/downstairs Wc**

Offering a WC, wash hand basin, tiling to the walls, double glazed window to the front, radiator, laminate flooring and colonial door.

### **Lounge**

16' 5" x 9' 11" ( 5.00m x 3.02m )

Featuring french patio doors leading to rear garden, gas coal effect fireplace with wood effect surrounding, colonial door, coving to the ceiling, radiator and laminate flooring.

### **Dining Room**

13' 2" max x 9' 11" ( 4.01m max x 3.02m )

Having a double glazed square bay window to the front, wood/glazed panel door, coving to the ceiling and radiator.

### **Kitchen/diner**

16' 4" x 8' 9" ( 4.98m x 2.67m )

Fitted kitchen having wall and base units, two double glazed windows to the rear, double glazed door, tiling to the walls, work surfaces, stainless steel sink and drainer unit, electric oven, gas hob, cooker-hood, plumbing for washing machine and dish washer, radiator, laminate flooring, colonial door and integrated fridge and freezer.

### **Landing**

Offering stairs from the entrance hall, loft access and radiator.

### **Bedroom One**

15' 1" to front of wardrobe x 10' 9" max ( 4.60m to front of wardrobe x 3.28m max )

Featuring a double glazed window to the front, radiator, built in wardrobes and colonial door.

### **En-suite**

The en-suite has a double glazed to the front,

shower cubicle, tiling to the walls, WC, extractor fan, wash hand basin and vanity, colonial door, cushion flooring, shaving point and radiator.

### **Bedroom Two**

14' 8" max x 10' 6" to back of wardrobe ( 4.47m max x 3.20m to back of wardrobe )

Having a double glazed window to the front, built in wardrobes, radiator and colonial door.

### **Bedroom Three**

11' 5" x 10' 3" max ( 3.48m x 3.12m max )

Offering a double glazed window, built in wardrobes, colonial door and radiator.

### **Bedroom Four**

8' 1" x 7' 8" max ( 2.46m x 2.34m max )

Featuring a double glazed window to the rear, built in wardrobes, radiator and colonial door.

### **Bathroom**

Having a double glazed window to the rear, radiator, bath with overhead shower, full tiling to the walls, WC, extractor fan, wash hand basin, colonial door, coving to the ceiling and laminate flooring.

### **Outside Rear Garden**

Laid to lawn rear garden, pergola, timber fencing forming the boundary and decking area.

### **Garage**

The garage houses the central heating boiler and offers up and over doors and electric and power is supplied.



***view this property online*** [williamhbrown.co.uk/Property/SCT109646](http://williamhbrown.co.uk/Property/SCT109646)



**welcome to**

## **Maple Avenue, Crowle Scunthorpe**

- Detached family home!
- Master bedroom with en-suite!
- Downstairs WC.
- Laid to lawn rear garden with pergola.
- Driveway for off-street parking!

Tenure: Freehold EPC Rating: C

# £250,000



**view this property online** [williamhbrown.co.uk/Property/SCT109646](http://williamhbrown.co.uk/Property/SCT109646)

Please note the marker reflects the postcode not the actual property



Property Ref:  
SCT109646 - 0008

1. MONEY LAUNDERING REGULATIONS Intending purchasers will be asked to produce identification documentation at a later stage and we would ask for your co-operation in order that there is no delay in agreeing the sale. 2. These particulars do not constitute part or all of an offer or contract. 3. The measurements indicated are supplied for guidance only and as such must be considered incorrect. Potential buyers are advised to recheck measurements before committing to any expense. 4. We have not tested any apparatus, equipment, fixtures or services and it is in the buyers interest to check the working condition of any appliances. 5. Where an EPC, or a Home Report (Scotland only) is held for this property, it is available for inspection at the branch by appointment. If you require a printed version of a Home Report, you will need to pay a reasonable production charge reflecting printing and other costs. 6. We are not able to offer an opinion either written or verbal on the content of these reports and this must be obtained from your legal representative. 7. Whilst we take care in preparing these reports, a buyer should ensure that his/her legal representative confirms as soon as possible all matters relating to title including the extent and boundaries of the property and other important matters before exchange of contracts.

William H Brown is a trading name of Sequence (UK) Limited which is registered in England and Wales under company number 4268443, Registered Office is Cumbria House, 16-20 Hockliffe Street, Leighton Buzzard, Bedfordshire, LU7 1GN. VAT Registration Number is 500 2481 05.

 **william h brown**



**01724 868448**



[scunthorpe@williamhbrown.co.uk](mailto:scunthorpe@williamhbrown.co.uk)



16-18 Oswald Road, SCUNTHORPE, South  
Humberside, DN15 7PT



[williamhbrown.co.uk](http://williamhbrown.co.uk)