



Canons Cottage, Swan Hill, Haselbury Plucknett, Crewkerne TA18 7QT

welcome to

Canons Cottage, Swan Hill, Haselbury Plucknett

A Grade II mid terraced character cottage set in the sought after village of Haselbury Plucknett. The accommodation briefly comprises entrance hall, living room, snug, kitchen/diner, three bedrooms and bathroom. Outside there is a good size rear garden.



Ground Floor

Entrance Hall

Single glazed door to front. Cupboard. Flagstone floor. Storage heater.

Living Room

15' x 13' 10" max (4.57m x 4.22m max)
Front aspect single glazed window. Open fireplace. Feature beams. Wood floors. TV and telephone points.

Snug

11' 1" x 8' 10" (3.38m x 2.69m)
Front aspect single glazed window with window seat. Flagstone floor. Storage heater.

Kitchen / Diner

24' 10" x 9' 4" max (7.57m x 2.84m max)
Three rear aspect double glazed windows. Double glazed skylight to rear. Single glazed door to rear. Fitted with a range of base and wall units. Work surfaces incorporating a sink and drainer. Tiled splashbacks. Aga. Space and plumbing for washing machine. Feature beams. Tiled floor. Storage heater.

Bathroom

Rear aspect double glazed window. Fitted with a suite comprising a panelled bath, shower cubicle, wash hand basin and WC. Extractor fan. Tiled floor. Towel heater.

First Floor

Landing

Rear aspect single glazed window. Access to loft. Fitted carpet.

Bedroom 1

15' 1" x 10' 3" (4.60m x 3.12m)
Front aspect single glazed window with window seat. Fitted wardrobe. Airing cupboard. Fitted carpet. Storage heater.

En Suite W C

Fitted with a WC and wash hand basin. Shaver point. Fitted carpet.

Bedroom 2

15' 4" x 9' 11" (4.67m x 3.02m)
Front aspect single glazed window. Vanity wash hand basin. Fitted carpet. Storage heater.

Bedroom 3

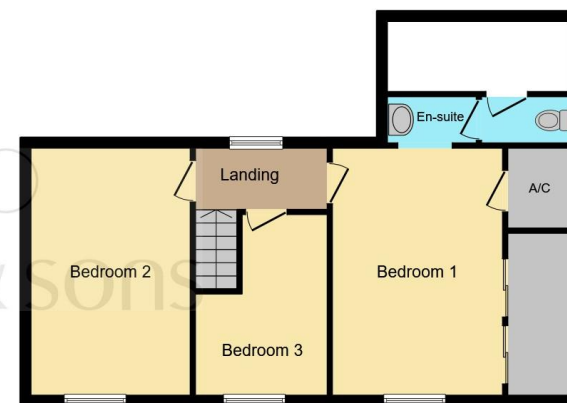
11' 6" x 8' 4" max (3.51m x 2.54m max)
Front aspect single glazed window. Wooden floor. Storage heater.

Outside

The good size enclosed rear garden is laid to lawn with shrub borders and a patio. Garden shed. Oil tank.



Ground Floor



First Floor

This floor plan is for illustrative purposes only. It is not drawn to scale. Any measurements, floor areas (including any total floor area), openings and orientation are approximate. No details are guaranteed, they cannot be relied upon for any purpose and they do not form part of any agreement. No liability is taken for any error, omission or misstatement. A party must rely upon its own inspection(s). Powered by www.focalagent.com



view this property online fox-and-sons.co.uk/Property/CRK106160



welcome to

Canons Cottage, Swan Hill, Haselbury Plucknett

- Mid Terrace Cottage
- Three Bedrooms
- Two Reception Rooms
- Grade II Listed
- Enclosed Rear Garden

Tenure: Freehold EPC Rating: Exempt
Council Tax Band: D

offers in excess of

£335,000



Please note the marker reflects the
postcode not the actual property

view this property online fox-and-sons.co.uk/Property/CRK106160



Property Ref:
CRK106160 - 0005

1. MONEY LAUNDERING REGULATIONS Intending purchasers will be asked to produce identification documentation at a later stage and we would ask for your co-operation in order that there is no delay in agreeing the sale. 2. These particulars do not constitute part or all of an offer or contract. 3. The measurements indicated are supplied for guidance only and as such must be considered incorrect. Potential buyers are advised to recheck measurements before committing to any expense. 4. We have not tested any apparatus, equipment, fixtures or services and it is in the buyers interest to check the working condition of any appliances. 5. Where an EPC, or a Home Report (Scotland only) is held for this property, it is available for inspection at the branch by appointment. If you require a printed version of a Home Report, you will need to pay a reasonable production charge reflecting printing and other costs. 6. We are not able to offer an opinion either written or verbal on the content of these reports and this must be obtained from your legal representative. 7. Whilst we take care in preparing these reports, a buyer should ensure that his/her legal representative confirms as soon as possible all matters relating to title including the extent and boundaries of the property and other important matters before exchange of contracts.

Fox & Sons is a trading name of Sequence (UK) Limited which is registered in England and Wales under company number 4268443, Registered Office is Cumbria House, 16-20 Hockliffe Street, Leighton Buzzard, Bedfordshire, LU7 1GN. VAT Registration Number is 500 2481 05.


fox & sons



01460 73421



Crewkerne@fox-and-sons.co.uk



1-3 Market Square, CREWKERNE, Somerset,
TA18 7LE



fox-and-sons.co.uk