



**Dukes Way, Axminster EX13 5FL**





**welcome to**

## **Dukes Way, Axminster**

Immaculately presented four double bedroom home situated on a pleasantly tucked away position with open outlook to the front. Further benefitting from double garage with driveway parking, enclosed rear garden, and upgraded bathroom and en-suite. This really is a gem which must be viewed!

### **Entrance Hallway**

Entered via Upvc double glazed door, stairs rising to first floor, radiator, ceiling light point

### **Cloakroom**

Low level WC, wash hand basin vanity unit, radiator, ceiling light point

### **Study**

11' 3" max x 9' 8" ( 3.43m max x 2.95m )  
Upvc double glazed window to front aspect, radiator, ceiling light point

### **Lounge Diner**

28' 5" max x 13' 4" max ( 8.66m max x 4.06m max )  
Dual aspect Upvc double glazed windows to front and side aspect with Upvc double glazed patio doors opening to rear garden, feature electric fireplace and surround, radiators, spot lighting and ceiling light points

### **Kitchen**

15' 8" max x 7' 11" ( 4.78m max x 2.41m )  
Upvc double glazed window and door opening to rear garden, full range of wall and base units with worksurface over and undercounter lighting, space and plumbing for washing machine and upright fridge freezer, integrated electric oven and gas hob with cooker hood over, drainer sink, wall mounted boiler, radiator, ceiling light point storage cupboard with lighting,

### **Landing**

Upvc double glazed window to front and rear aspect, access to loft via hatch, storage cupboard over the stairs, radiator, ceiling light point

### **Bedroom One**

11' 3" x 11' ( 3.43m x 3.35m )

Dual aspect Upvc double glazed windows to front and side aspects, fitted wardrobes, radiator, ceiling light point

### **En Suite**

Upvc double glazed opaque glass window to side aspect, walk in shower cubicle, low level WC, wash hand basin vanity unit with shaver point

### **Bedroom Two**

11' 5" x 8' 5" ( 3.48m x 2.57m )  
Upvc double glazed window to front aspect, radiator, ceiling light point

### **Bedroom Three**

11' 11" x 9' 11" ( 3.63m x 3.02m )  
Upvc double glazed window to rear aspect, radiator, ceiling light point

### **Bedroom Four**

11' 5" max x 9' 6" ( 3.48m max x 2.90m )  
Upvc double glazed window to side aspect, radiator, ceiling light point

### **Bathroom**

Upvc double glazed opaque glass window to rear aspect, walk in shower cubicle, low level WC, wash hand basin, heated towel rail

### **Rear Garden**

Enclosed rear garden with timber fencing and gated access to the rear leading to driveway and garage, laid to lawn with patio seating area, range of mature plants and shrubs

### **Garage**

18' 2" x 17' 10" ( 5.54m x 5.44m )  
Accessed via up and over door, power and lighting, driveway parking to front of garage





***view this property online*** [fox-and-sons.co.uk/Property/AXM104100](http://fox-and-sons.co.uk/Property/AXM104100)



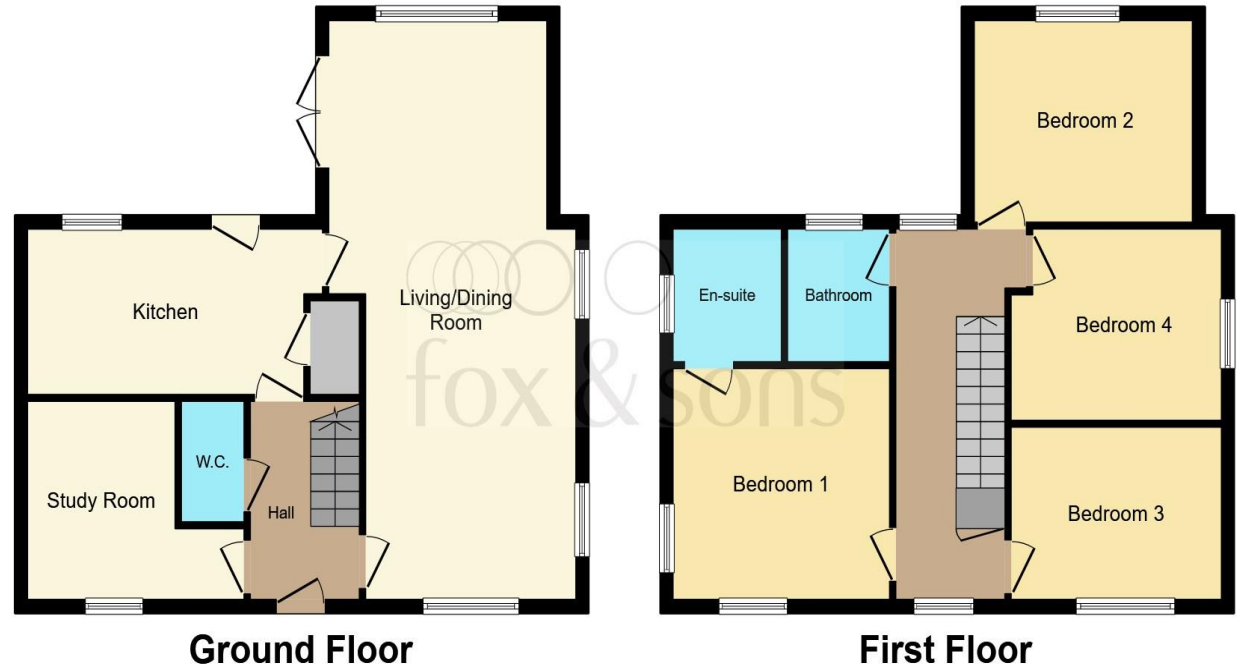
welcome to

## Dukes Way, Axminster

- DOUBLE GARAGE AND DRIVEWAY PARKING
- FOUR DOUBLE BEDROOMS
- LOUNGE DINER
- STUDY
- REMAINDER OF NHBC

Tenure: Freehold EPC Rating: C

**£400,000**



This floorplan is for illustrative purposes only and is not drawn to scale. Measurements, floor-areas, openings and orientations are approximate. They should not be relied upon for any purpose and do not form any part of an agreement. No liability is taken for any error or mis-statement. All parties must rely on their own inspections.

view this property online [fox-and-sons.co.uk/Property/AXM104100](https://fox-and-sons.co.uk/Property/AXM104100)



Property Ref:  
AXM104100 - 0009

1. MONEY LAUNDERING REGULATIONS Intending purchasers will be asked to produce identification documentation at a later stage and we would ask for your co-operation in order that there is no delay in agreeing the sale. 2. These particulars do not constitute part or all of an offer or contract. 3. The measurements indicated are supplied for guidance only and as such must be considered incorrect. Potential buyers are advised to recheck measurements before committing to any expense. 4. We have not tested any apparatus, equipment, fixtures or services and it is in the buyers interest to check the working condition of any appliances. 5. Where an EPC, or a Home Report (Scotland only) is held for this property, it is available for inspection at the branch by appointment. If you require a printed version of a Home Report, you will need to pay a reasonable production charge reflecting printing and other costs. 6. We are not able to offer an opinion either written or verbal on the content of these reports and this must be obtained from your legal representative. 7. Whilst we take care in preparing these reports, a buyer should ensure that his/her legal representative confirms as soon as possible all matters relating to title including the extent and boundaries of the property and other important matters before exchange of contracts.

Fox & Sons is a trading name of Sequence (UK) Limited which is registered in England and Wales under company number 4268443, Registered Office is Cumbria House, 16-20 Hockliffe Street, Leighton Buzzard, Bedfordshire, LU7 1GN. VAT Registration Number is 500 2481 05.

  
fox & sons



**01297 32323**



[axminster@fox-and-sons.co.uk](mailto:axminster@fox-and-sons.co.uk)



West Street, AXMINSTER, Devon, EX13 5NU



[fox-and-sons.co.uk](https://fox-and-sons.co.uk)