



The Meadow, Retford DN22 6QP

welcome to

The Meadow, Retford

****NO ONWARD CHAIN**** This is a GENEROUSLY APPOINTED three DOUBLE bedroom detached bungalow. Spacious open plan living kitchen with a vaulted ceiling and a utility. Master bedroom with ensuite plus two further double bedrooms and a bathroom.



Auctioneer's Comments

This property is offered through Modern Method of Auction. Should you view, offer or bid your data will be shared with the Auctioneer, iamsold Limited. This method requires both parties to complete the transaction within 56 days, allowing buyers to proceed with mortgage finance (subject to lending criteria, affordability and survey). The buyer is required to sign a reservation agreement and make payment of a non-refundable Reservation Fee of 4.5% of the purchase price including VAT, subject to a minimum of £6600.00 including VAT. This fee is paid in addition to purchase price and will be considered as part of the chargeable consideration for the property in the calculation for stamp duty liability. Buyers will be required to complete an identification process with iamsold and provide proof of how the purchase would be funded. The property has a Buyer Information Pack containing documents about the property. The documents may not tell you everything you need to know, so you must complete your own due diligence before bidding. A sample of the Reservation Agreement and terms and conditions are contained within this pack. The buyer will also make payment of no more than £349 inc. VAT towards the preparation cost of the pack. Please confirm exact costs with the auctioneer. The estate agent and auctioneer may recommend the services of other providers to you, in which they will be paid for the referral. These services are optional, and you will be advised of any payment, in writing before any services are accepted. Listing is subject to a start price and undisclosed reserve price that can change.

Entrance Porch

A double glazed entrance door leads to the entrance hall.

Entrance Hall

Laminate flooring, central heating radiator, storage cupboard and loft access.

Living Kitchen

23' 5" x 12' 11" max (7.14m x 3.94m max)

This lovely space incorporates a kitchen and living area. The kitchen area is fitted with a range of cream wall and base units with complementary worksurfaces and a stainless steel sink and drainer. Integrated electric hob with an extractor above plus an integrated fridge freezer and oven, there is also plumbing for a dishwasher. The kitchen is open into the living area with laminate flooring throughout the space, apex ceiling with two velux style windows, two double glazed windows, central heating radiator and double glazed french doors leading to the rear garden.

Utility

Wall and base units, plumbing for a washing machine and a side facing double glazed door.

Master Bedroom One

10' 10" x 10' 5" (3.30m x 3.17m)

Central heating radiator and a front facing double glazed window.

Ensuite

Fitted with a shower cubicle, wash hand basin, w.c. and a double glazed window.

Bedroom Two

12' 6" max x 12' 3" (3.81m max x 3.73m)

Central heating radiator and a side facing double glazed window.

Bedroom Three

11' 1" x 8' 5" (3.38m x 2.57m)

A further double room with a central heating radiator and a front facing double glazed window.

Bathroom

Fitted with a white three piece suite with a shower above the bath, double glazed window and a heated towel rail.

Exterior

To the front of the property is an open lawned garden with a garden path and a tarmac driveway. To the side and rear are lawned gardens with a paved patio. The gardens are enclosed by fence and gated.



view this property online williamhbrown.co.uk/Property/RFD109041



welcome to

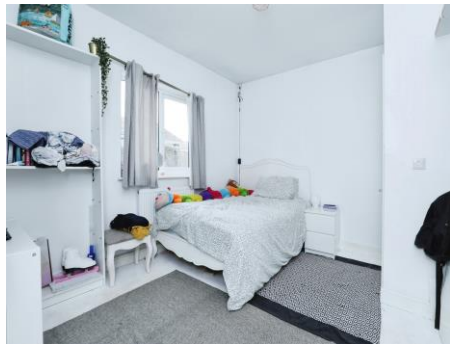
The Meadow, Retford

- Sale by Modern Auction (T&Cs apply)
- Subject to an undisclosed Reserve Price
- Buyers fees apply
- Three DOUBLE BEDROOM modern build detached bungalow
- Spacious and airy open plan living kitchen with a vaulted ceiling

Tenure: Freehold EPC Rating: B

guide price

£210,000



Please note the marker reflects the postcode not the actual property

view this property online [williamhbrown.co.uk/Property/RFD109041](https://www.williamhbrown.co.uk/Property/RFD109041)



Property Ref:
RFD109041 - 0008

1. MONEY LAUNDERING REGULATIONS Intending purchasers will be asked to produce identification documentation at a later stage and we would ask for your co-operation in order that there is no delay in agreeing the sale. 2. These particulars do not constitute part or all of an offer or contract. 3. The measurements indicated are supplied for guidance only and as such must be considered incorrect. Potential buyers are advised to recheck measurements before committing to any expense. 4. We have not tested any apparatus, equipment, fixtures or services and it is in the buyers interest to check the working condition of any appliances. 5. Where an EPC, or a Home Report (Scotland only) is held for this property, it is available for inspection at the branch by appointment. If you require a printed version of a Home Report, you will need to pay a reasonable production charge reflecting printing and other costs. 6. We are not able to offer an opinion either written or verbal on the content of these reports and this must be obtained from your legal representative. 7. Whilst we take care in preparing these reports, a buyer should ensure that his/her legal representative confirms as soon as possible all matters relating to title including the extent and boundaries of the property and other important matters before exchange of contracts.

William H Brown is a trading name of Sequence (UK) Limited which is registered in England and Wales under company number 4268443, Registered Office is Cumbria House, 16-20 Hockliffe Street, Leighton Buzzard, Bedfordshire, LU7 1GN. VAT Registration Number is 500 2481 05.



william h brown



01777 704248



retford@williamhbrown.co.uk



10-12 Grove Street, RETFORD,
Nottinghamshire, DN22 6JR



[williamhbrown.co.uk](https://www.williamhbrown.co.uk)