

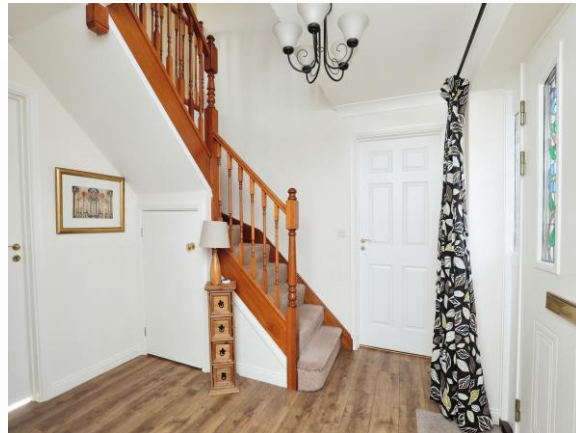


Marquis Gardens, Retford DN22 7JB

welcome to

Marquis Gardens, Retford

OFFERED WITH NO UPWARD CHAIN is this four bedroom detached family home situated in the MUCH REGARDED London Road area of Retford. Ideally located within a mile of the town centre and in close proximity to two highly regarded primary schools.



Entrance Hall

A double glazed door to the front leads to a spacious hallway with a storage cupboard plus under stairs storage, central heating radiator and stairs leading to the first floor.

Cloakroom

Fitted with a w.c. and washhand basin. Coving to the ceiling, tiled splash back and double glazed window.

Study/family Room

11' x 8' 10" (3.35m x 2.69m)

Loft access and double glazed window to the front.

Lounge

20' x 11' 7" (6.10m x 3.53m)

Gas fire place, TV point, coving to the ceiling, two central heating radiators, a double glazed window to the front and double glazed patio doors to the rear garden.

Dining Room

9' 2" x 9' 8" plus bay window (2.79m x 2.95m plus bay window)

Double glazed bay window to the rear and a door to the lounge.

Kitchen

14' max x 11' 5" (4.27m max x 3.48m)

Fitted with wall and base units, complementary work surfaces, 1 1/2 sink and drainer unit and splash back tiling. Integrated appliances including fridge, freezer, electric oven and dish washer. Central heating radiator and double glazed window to the rear.

Utility Room

7' 7" x 5' 6" (2.31m x 1.68m)

Fitted with wall and base units with work surfaces. Worcester boiler, space for dryer and plumbing for washing machine. Side facing double glazed door.

First Floor

Galleried Landing

Staircase leading to the galleried landing with airing cupboard housing the water cylinder, central heating

radiator and double glazed window to the front.

Bedroom One

12' 1" x 11' 3" max (3.68m x 3.43m max)

Built in wardrobes, central heating radiator and double glazed window.

Ensuite

Fitted with wc, wash hand basin and shower cubicle. Extractor fan and double glazed window.

Bedroom Two

9' 10" x 11' 11" max (3.00m x 3.63m max)

Built-in wardrobes, central heating radiator and double glazed window to the front.

Bedroom Three

9' 10" plus wardrobe x 9' 11" (3.00m plus wardrobe x 3.02m)

Built in wardrobes, central heating radiator and double glazed window to the rear.

Bedroom Four

6' 10" x 9' 5" max (2.08m x 2.87m max)

Fitted wardrobes, central heating radiator and double glazed window to the rear.

Bathroom

Fitted with a w.c, wash hand basin and bath with shower above. Tiled walls, coving to the ceiling, central heating radiator and front facing double glazed window.

Exterior

To the front of the property are a small lawned garden and a sweeping paved driveway which leads to the double garage. To the rear is a south facing generous lawned garden enclosed by fence and gated to the side.

Double Garage

Accessed via two up and over doors. The double garage has power, light and shelving..



view this property online williamhbrown.co.uk/Property/RFD108371



welcome to

Marquis Gardens, Retford

- ****NO UPWARD CHAIN****
- Four bedroom detached family home
- Generously appointed internal accommodation
- Master bedroom with ensuite
- Front and rear gardens, double garage.

Tenure: Freehold EPC Rating: C

offers in excess of

£375,000



Please note the marker reflects the postcode not the actual property

view this property online williamhbrown.co.uk/Property/RFD108371



Property Ref:
RFD108371 - 0010

1. MONEY LAUNDERING REGULATIONS Intending purchasers will be asked to produce identification documentation at a later stage and we would ask for your co-operation in order that there is no delay in agreeing the sale. 2. These particulars do not constitute part or all of an offer or contract. 3. The measurements indicated are supplied for guidance only and as such must be considered incorrect. Potential buyers are advised to recheck measurements before committing to any expense. 4. We have not tested any apparatus, equipment, fixtures or services and it is in the buyers interest to check the working condition of any appliances. 5. Where an EPC, or a Home Report (Scotland only) is held for this property, it is available for inspection at the branch by appointment. If you require a printed version of a Home Report, you will need to pay a reasonable production charge reflecting printing and other costs. 6. We are not able to offer an opinion either written or verbal on the content of these reports and this must be obtained from your legal representative. 7. Whilst we take care in preparing these reports, a buyer should ensure that his/her legal representative confirms as soon as possible all matters relating to title including the extent and boundaries of the property and other important matters before exchange of contracts.

William H Brown is a trading name of Sequence (UK) Limited which is registered in England and Wales under company number 4268443, Registered Office is Cumbria House, 16-20 Hockliffe Street, Leighton Buzzard, Bedfordshire, LU7 1GN. VAT Registration Number is 500 2481 05.



william h brown



01777 704248



retford@williamhbrown.co.uk



10-12 Grove Street, RETFORD,
Nottinghamshire, DN22 6JR



williamhbrown.co.uk