



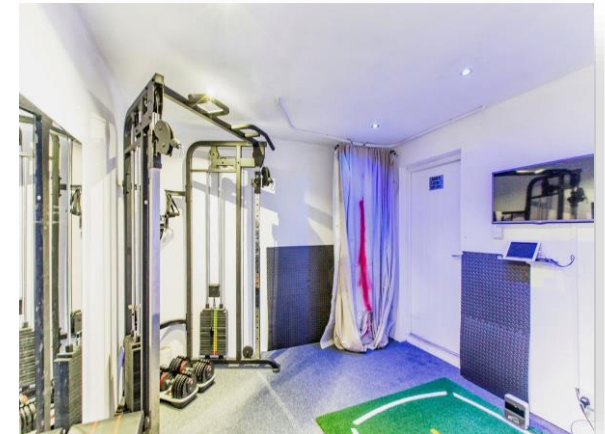
**Kelmarsh Avenue, Raunds WELLINGBOROUGH NN9 6UQ**



**welcome to**

**Kelmarsh Avenue, Raunds WELLINGBOROUGH**

This Three bedroom Link Detached home offers to the ground floor; entrance hall, cloakroom, lounge and kitchen/diner. On the first floor are the Three bedrooms one with en suite and the family bathroom. The rear garden is laid with artificial lawn has a patio area and gated access.



### **Entrance Hall**

Entered via wooden door to the front aspect, stairs rising to the first floor landing, telephone point, radiator and doors to all rooms.

### **Cloakroom**

Double glazed obscure window to the front aspect, WC, wash hand basin, extractor fan, tiling and radiator.

### **Lounge**

16' 11" x 10' 7" ( 5.16m x 3.23m )

Double glazed window to the front aspect, radiator and television point.

### **Kitchen / Diner**

18' 1" x 9' 8" ( 5.51m x 2.95m )

Fitted kitchen comprising a range of matching wall and base units with work surfaces over, stainless steel sink and drainer, splash backs, electric oven and gas hob with cooker hood over, plumbing for washing machine and dishwasher, integrated fridge/freezer, double glazed window to the rear aspect, under stairs storage, radiator, central heating boiler in cupboard and double glazed French doors to the rear aspect.

### **First Floor Landing**

Stairs rising from the entrance hall, airing cupboard, access to loft space partial boarding, doors to the bedrooms and bathroom.

### **Bedroom One**

12' 11" x 10' 7" ( 3.94m x 3.23m )

Double glazed window to the front aspect, radiator and door to en suite.

### **En Suite**

WC, wash hand basin, double shower cubicle, extractor fan, spot lights, part tiling and radiator.

### **Bedroom Two**

11' 3" x 9' 10" ( 3.43m x 3.00m )

Double glazed window to the rear aspect and radiator.

### **Bedroom Three**

8' x 7' 8" ( 2.44m x 2.34m )

Double glazed window to the rear aspect and radiator.

### **Bathroom**

Double glazed window to the front aspect, WC, wash hand basin, bath with shower over, part tiling and heated towel rail.

### **Externally**

#### **Front**

Driveway providing off road parking for two cars.

#### **Rear Garden**

Laid with artificial lawn, patio providing a seating area, outside power sockets and tap, gated side access and door to the garage.

#### **Garage**

Accessed via up and over door from the driveway, power and lighting connected partially converted.



**view this property online** [williamhbrown.co.uk/Property/RDS105901](http://williamhbrown.co.uk/Property/RDS105901)



welcome to

## Kelmarsh Avenue, Raunds WELLINGBOROUGH

- LINK DETACHED HOME
- THREE BEDROOMS
- OFF ROAD PARKING
- GARAGE
- EN SUITE TO MASTER

Tenure: Freehold EPC Rating: B

offers in excess of

**£295,000**



This floor plan is for illustrative purposes only. It is not drawn to scale. Any measurements, floor areas (including any total floor areas), openings and orientation are approximate. No details are guaranteed. They cannot be relied upon for any purpose and they do not form part of any agreement. No liability is taken for any error, omission or misstatement. A party must rely upon its own inspection(s). Powered by www.floorplan.com



Please note the marker reflects the  
postcode not the actual property

**view this property online** [williambrown.co.uk/Property/RDS105901](http://williambrown.co.uk/Property/RDS105901)



Property Ref:  
RDS105901 - 0004

1. MONEY LAUNDERING REGULATIONS Intending purchasers will be asked to produce identification documentation at a later stage and we would ask for your co-operation in order that there is no delay in agreeing the sale. 2. These particulars do not constitute part or all of an offer or contract. 3. The measurements indicated are supplied for guidance only and as such must be considered incorrect. Potential buyers are advised to recheck measurements before committing to any expense. 4. We have not tested any apparatus, equipment, fixtures or services and it is in the buyers interest to check the working condition of any appliances. 5. Where an EPC, or a Home Report (Scotland only) is held for this property, it is available for inspection at the branch by appointment. If you require a printed version of a Home Report, you will need to pay a reasonable production charge reflecting printing and other costs. 6. We are not able to offer an opinion either written or verbal on the content of these reports and this must be obtained from your legal representative. 7. Whilst we take care in preparing these reports, a buyer should ensure that his/her legal representative confirms as soon as possible all matters relating to title including the extent and boundaries of the property and other important matters before exchange of contracts.

William H Brown is a trading name of Sequence (UK) Limited which is registered in England and Wales under company number 4268443, Registered Office is Cumbria House, 16-20 Hockliffe Street, Leighton Buzzard, Bedfordshire, LU7 1GN. VAT Registration Number is 500 2481 05.



william h brown



**01933 626625**



[raunds@williambrown.co.uk](mailto:raunds@williambrown.co.uk)



57 Brook Street, Raunds, WELLINGBOROUGH,  
Northamptonshire, NN9 6LL



**[williambrown.co.uk](http://williambrown.co.uk)**