



Culliford Way, Weymouth, DT3 6AN

welcome to

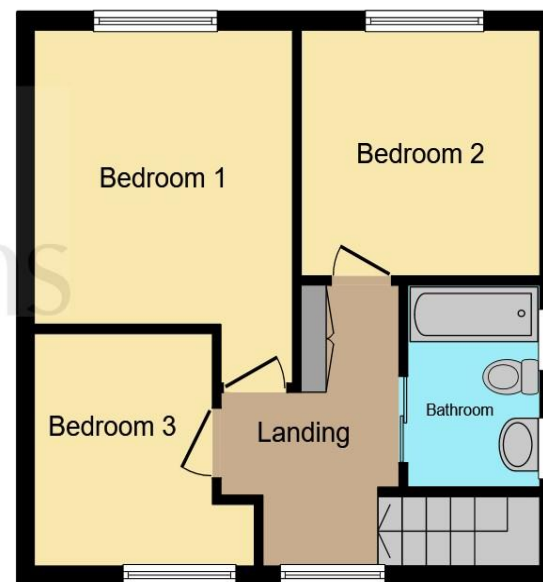
Culliford Way, Weymouth

An end of terrace family home which provides an opportunity for modernisation and improvement. Offering front and rear garden, three bedrooms, and additional reception rooms, this could be the perfect family home for someone looking for a project





Ground Floor



First Floor

Entrance Hall

Porch

Lounge

20' 1" x 11' max (6.12m x 3.35m max)

Sun Room/Dining

9' 5" x 10' 2" (2.87m x 3.10m)

Kitchen

16' 7" x 9' 5" (5.05m x 2.87m)

Utility

Side Hall/Utility

17' 4" x 4' 4" (5.28m x 1.32m)

Bedroom 1

Irregular Shaped Room 10' 1" x 13' 2" (3.07m x 4.01m)

Bedroom 2

9' 2" x 10' 2" (2.79m x 3.10m)

Bedroom 3

Irregular Shaped Room 8' 7" x 9' 3" (2.62m x 2.82m)

Bathroom

Total floor area 113.2 m² (1,218 sq.ft.) approx

This floor plan is for illustrative purposes only. It is not drawn to scale. Any measurements, floor areas (including any total floor area), openings and orientation are approximate. No details are guaranteed, they cannot be relied upon for any purpose and they do not form part of any agreement. No liability is taken for any error, omission or misstatement. A party must rely upon its own inspection(s). Powered by www.focalagent.com

welcome to

Culliford Way, Weymouth

- Front and rear gardens with a large shed/workshop at rear
- Three bedrooms
- Large lounge and separate sunroom/dining area
- Lots of scope to improve
- Utility room

Tenure: Freehold EPC Rating: C

£240,000



Please note the marker reflects the postcode not the actual property

view this property online fox-and-sons.co.uk/Property/WMT106203



Property Ref:
WMT106203 - 0003

1. MONEY LAUNDERING REGULATIONS Intending purchasers will be asked to produce identification documentation at a later stage and we would ask for your co-operation in order that there is no delay in agreeing the sale. 2. These particulars do not constitute part or all of an offer or contract. 3. The measurements indicated are supplied for guidance only and as such must be considered incorrect. Potential buyers are advised to recheck measurements before committing to any expense. 4. We have not tested any apparatus, equipment, fixtures or services and it is in the buyers interest to check the working condition of any appliances. 5. Where an EPC, or a Home Report (Scotland only) is held for this property, it is available for inspection at the branch by appointment. If you require a printed version of a Home Report, you will need to pay a reasonable production charge reflecting printing and other costs. 6. We are not able to offer an opinion either written or verbal on the content of these reports and this must be obtained from your legal representative. 7. Whilst we take care in preparing these reports, a buyer should ensure that his/her legal representative confirms as soon as possible all matters relating to title including the extent and boundaries of the property and other important matters before exchange of contracts.


fox & sons



01305 783488



Weymouth@fox-and-sons.co.uk



31 St. Thomas Street, WEYMOUTH, Dorset, DT4 8EJ



fox-and-sons.co.uk