



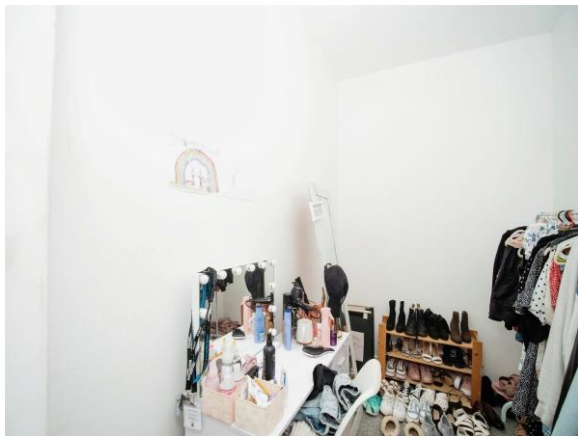
**Espionage Place, South Way, Southwell Business Park, Portland, DT5
2FF**

Not for marketing purposes INTERNAL USE ONLY

welcome to

Espionage Place, South Way, Southwell Business Park, Portland

Fox & Sons are offering to the market this 2- bedroom ground floor apartment situated moments away from Portland Bill, with direct access to coastal paths and walks. This is a fantastic opportunity to purchase an investment property, or somewhere to call home for yourself





Entrance Hall

Kitchen/Lounge

Irregular Shaped Room 17' max x 19' 8" (5.18m max x 5.99m)

Bedroom 1

Irregular Shaped Room 14' 1" max x 13' 3" max (4.29m max x 4.04m)

Dressing Room

9' 5" x 6' 3" (2.87m x 1.91m)

Bedroom 2

Irregular Shaped Room 13' 3" max x 14' 8" (4.04m max x 4.47m)

Parking

This floor plan is for illustrative purposes only. It is not drawn to scale. Any measurements, floor areas (including any total floor area), openings and orientation are approximate. No details are guaranteed, they cannot be relied upon for any purpose and they do not form part of any agreement. No liability is taken for any error, omission or misstatement. A party must rely upon its own inspection(s). Powered by www.focalagent.com

welcome to

Espionage Place, South Way, Southwell Business Park, Portland

- Close to Portland Bill
- Two double bedrooms
- Allocated parking space
- Modernised throughout
- Good sized rooms

Tenure: Leasehold EPC Rating: D

This is a Leasehold property with details as follows; Term of Lease 125 years from 29 Sep 2017. Should you require further information please contact the branch. Please Note additional fees could be incurred for items such as Leasehold packs.

£135,000



Please note the marker reflects the postcode not the actual property

check out more properties at fox-and-sons.co.uk



Property Ref:
WMT106356 - 0005

1. MONEY LAUNDERING REGULATIONS Intending purchasers will be asked to produce identification documentation at a later stage and we would ask for your co-operation in order that there is no delay in agreeing the sale. 2. These particulars do not constitute part or all of an offer or contract. 3. The measurements indicated are supplied for guidance only and as such must be considered incorrect. Potential buyers are advised to recheck measurements before committing to any expense. 4. We have not tested any apparatus, equipment, fixtures or services and it is in the buyers interest to check the working condition of any appliances. 5. Where an EPC, or a Home Report (Scotland only) is held for this property, it is available for inspection at the branch by appointment. If you require a printed version of a Home Report, you will need to pay a reasonable production charge reflecting printing and other costs. 6. We are not able to offer an opinion either written or verbal on the content of these reports and this must be obtained from your legal representative. 7. Whilst we take care in preparing these reports, a buyer should ensure that his/her legal representative confirms as soon as possible all matters relating to title including the extent and boundaries of the property and other important matters before exchange of contracts.

Not for marketing purposes INTERNAL USE ONLY



01305 783488



Weymouth@fox-and-sons.co.uk



31 St. Thomas Street, WEYMOUTH, Dorset, DT4 8EJ



fox-and-sons.co.uk