



**Francis Road, Horndean Waterlooville PO8 0HZ**

**welcome to**

## **Francis Road, Horndean Waterlooville**

Beautifully renovated three bed detached bungalow in sought-after Clanfield. Open-plan living, modern kitchen, south-facing garden, garage and no onward chain. Close to good schools in the village, amenities and transport links-ready to move in!

### **Entrance Hall**

Laminate flooring. Doors to:

### **Shower Room**

Double glazed window to side aspect. Walk-in shower with aqua panelling to walls, low level WC and wash hand basin set over vanity unit. Laminate flooring, heated towel rail.

### **Utility Room**

Double glazed window to side aspect. Space for washing machine and tumble dryer. Storage cupboard.

### **Kitchen**

Double glazed window to side and rear aspects. Range of wall and base units with cupboards and drawers, bottle storage and plate rack. Work surface over, incorporating sink unit with mixer tap over. Built-in oven, fridge/freezer, dishwasher and electric hob with extractor hood over. Laminate flooring. Through to dining area.

### **Dining Area**

Double glazed sliding patio doors leading to rear garden. Laminate flooring, radiator. Through to lounge area.

### **Lounge Area**

Double glazed window to side aspect. Laminate flooring, two radiators.

### **Bedroom One**

Double glazed window to front aspect. Carpet flooring, radiator, built-in wardrobe.

### **Bedroom Two**

Double glazed window to front aspect. Carpet flooring, radiator, built-in wardrobe.

### **Bedroom Three**

Currently set up as an office. Double glazed window to side aspect. Carpet flooring, radiator.

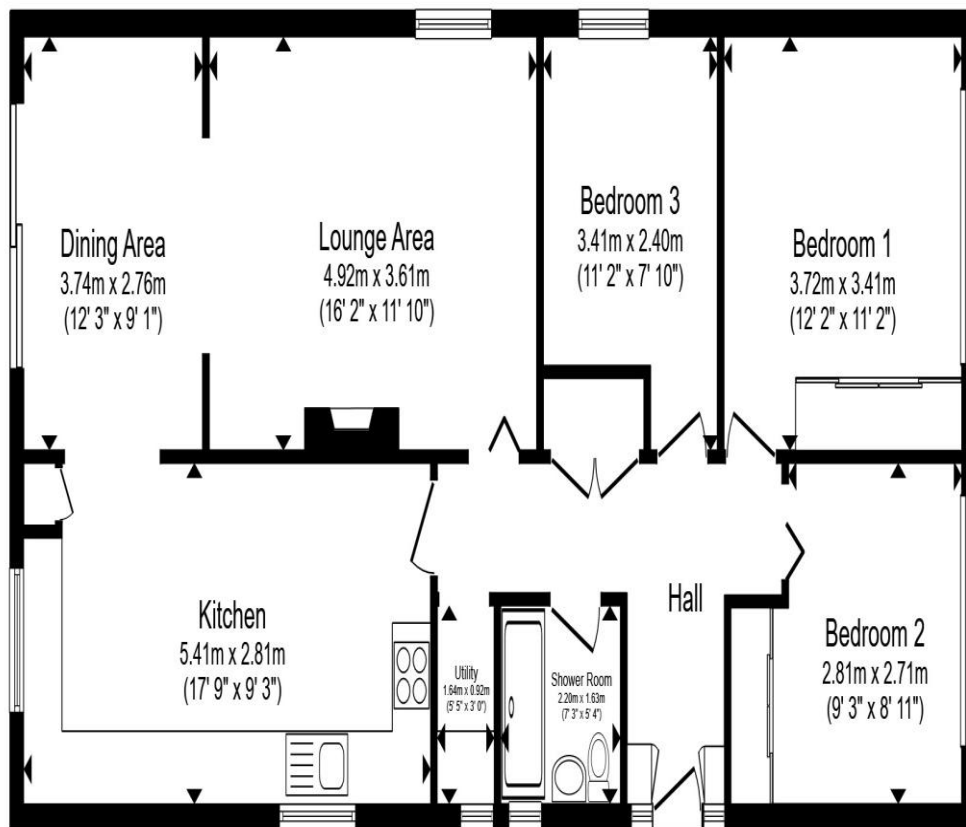
### **Outside**

#### **Front**

Laid to shingle with off road parking space for two vehicles. Access to garage with up and over door, power and light.

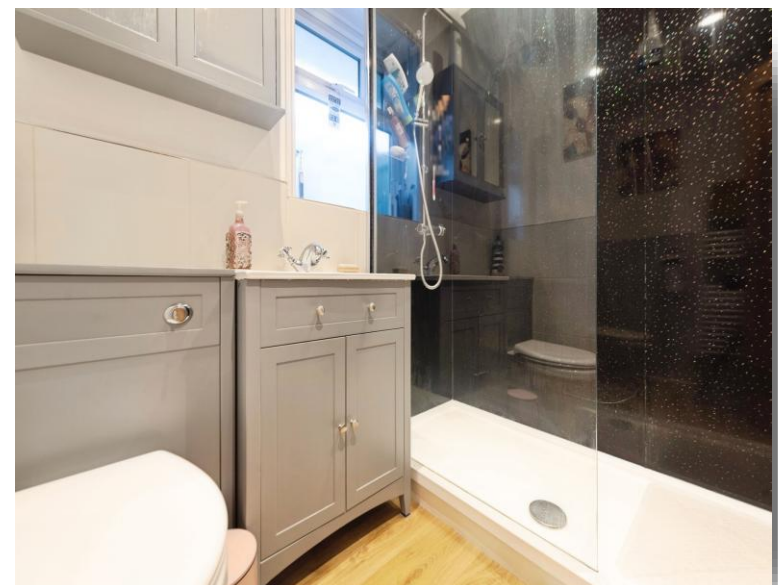
#### **Rear Garden**

Laid to lawn with patio area and gravelled area. Wooden shed.



Total floor area 92.7 m<sup>2</sup> (998 sq.ft.) approx

This floor plan is for illustrative purposes only. It is not drawn to scale. Any measurements, floor areas (including any total floor area), openings and orientation are approximate. No details are guaranteed, they cannot be relied upon for any purpose and they do not form part of any agreement. No liability is taken for any error, omission or misstatement. A party must rely upon its own inspection(s). Powered by [www.propertybox.io](http://www.propertybox.io)





**welcome to**  
**Francis Road,**  
**Horndean Waterlooville**

- NO ONWARD CHAIN!
- Three Double Bedrooms
- Modern Family Bathroom
- Open Plan Lounge & Dining Area
- South Facing Garden

Tenure: Freehold EPC Rating: F  
Council Tax Band: D

**£475,000**



**view this property online** [fox-and-sons.co.uk/Property/WLV109533](https://fox-and-sons.co.uk/Property/WLV109533)



Property Ref:  
WLV109533 - 0003

1. MONEY LAUNDERING REGULATIONS Intending purchasers will be asked to produce identification documentation at a later stage and we would ask for your co-operation in order that there is no delay in agreeing the sale. 2. These particulars do not constitute part or all of an offer or contract. 3. The measurements indicated are supplied for guidance only and as such must be considered incorrect. Potential buyers are advised to recheck measurements before committing to any expense. 4. We have not tested any apparatus, equipment, fixtures or services and it is in the buyers interest to check the working condition of any appliances. 5. Where an EPC, or a Home Report (Scotland only) is held for this property, it is available for inspection at the branch by appointment. If you require a printed version of a Home Report, you will need to pay a reasonable production charge reflecting printing and other costs. 6. We are not able to offer an opinion either written or verbal on the content of these reports and this must be obtained from your legal representative. 7. Whilst we take care in preparing these reports, a buyer should ensure that his/her legal representative confirms as soon as possible all matters relating to title including the extent and boundaries of the property and other important matters before exchange of contracts.

Fox & Sons is a trading name of Sequence (UK) Limited which is registered in England and Wales under company number 4268443, Registered Office is Cumbria House, 16-20 Hockliffe Street, Leighton Buzzard, Bedfordshire, LU7 1GN. VAT Registration Number is 500 2481 05.

fox & sons



**023 9226 2447**



[Waterlooville@fox-and-sons.co.uk](mailto:Waterlooville@fox-and-sons.co.uk)



81B London Road, WATERLOOVILLE,  
Hampshire, PO7 7ES



**[fox-and-sons.co.uk](https://fox-and-sons.co.uk)**