



Longwood Avenue, Waterloooville PO8 8HX

welcome to

Longwood Avenue, Waterloo

Two downstairs bedrooms and a first floor master bed. Office potential for bedroom three. A large garage/workshop & private driveway. Close to good schools, local amenities and transport links.

Entrance

Into lounge.

Lounge

12' 11" max x 12' 3" (3.94m max x 3.73m)

L-Shaped room with double glazed window to front aspect. Under stairs storage, laminate flooring, radiator. Stairs to master bedroom. Door to dining room/bedroom three and into a hallway with doors to kitchen, bathroom and bedroom two.

Dining Room / Bedroom Three

13' x 10' 1" max (3.96m x 3.07m max)

Double glazed window to front aspect. Log burner with hearth, radiator.

Kitchen

12' 7" x 10' 1" max (3.84m x 3.07m max)

Double glazed window to rear aspect. Range of wall and base units with work surface over, incorporating one and a half bowl sink unit with mixer tap over. Part tiled walls, space for range style oven and hob with extractor hood over, space for washing machine and fridge/freezer. Wall mounted boiler. Door to rear porch.

Porch

Double glazed to rear and side aspects. Door leading to garden.

Bedroom Two

11' 4" x 10' 1" (3.45m x 3.07m)

Double glazed window to rear aspect. Radiator.

Bathroom

Double glazed window to rear aspect. Suite comprising low level WC with push button flush, wash hand basin over vanity unit and panel enclosed bath with shower over. Tiled walls, heated towel rail.

First Floor

Bedroom One

17' 6" x 10' 9" (5.33m x 3.28m)

Restricted head height. Two double glazed windows to rear aspect. Air conditioning unit, two storage cupboards, radiator.

Outside

Front Garden

Walled garden with off road parking. Access to garage/workshop.

Garage / Workshop

29' 1" x 13' 3" max (8.86m x 4.04m max)

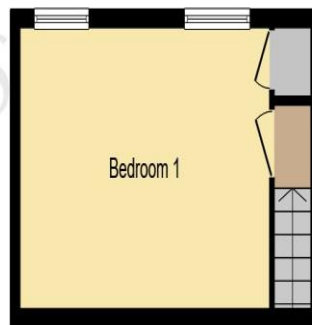
Electric roller door, power and light. Double glazed door and window to side aspect leading to garden. Radiator. Corrugated steel roof.

Rear Garden

Side pedestrian access, laid to patio. Personal door to garage.



Ground Floor



First Floor

This floor plan is for illustrative purposes only. It is not drawn to scale. Any measurements, floor areas (including any total floor area), openings and orientation are approximate. No details are guaranteed, they cannot be relied upon for any purpose and they do not form part of any agreement. No liability is taken for any error, omission or misstatement. A party must rely upon its own inspection(s). Powered by www.focalagent.com



welcome to
Longwood Avenue,
Waterlooville

- Detached Chalet Bungalow
- Three Bedrooms
- 29' x 13' Garage / Workshop
- Flexible Layout
- Low Maintenance Patio Garden

Tenure: Freehold EPC Rating: C
Council Tax Band: D

offers in excess of
£325,000



view this property online fox-and-sons.co.uk/Property/WLV106532



Property Ref:
WLV106532 - 0005

1. MONEY LAUNDERING REGULATIONS Intending purchasers will be asked to produce identification documentation at a later stage and we would ask for your co-operation in order that there is no delay in agreeing the sale. 2. These particulars do not constitute part or all of an offer or contract. 3. The measurements indicated are supplied for guidance only and as such must be considered incorrect. Potential buyers are advised to recheck measurements before committing to any expense. 4. We have not tested any apparatus, equipment, fixtures or services and it is in the buyers interest to check the working condition of any appliances. 5. Where an EPC, or a Home Report (Scotland only) is held for this property, it is available for inspection at the branch by appointment. If you require a printed version of a Home Report, you will need to pay a reasonable production charge reflecting printing and other costs. 6. We are not able to offer an opinion either written or verbal on the content of these reports and this must be obtained from your legal representative. 7. Whilst we take care in preparing these reports, a buyer should ensure that his/her legal representative confirms as soon as possible all matters relating to title including the extent and boundaries of the property and other important matters before exchange of contracts.

Fox & Sons is a trading name of Sequence (UK) Limited which is registered in England and Wales under company number 4268443, Registered Office is Cumbria House, 16-20 Hockliffe Street, Leighton Buzzard, Bedfordshire, LU7 1GN. VAT Registration Number is 500 2481 05.


fox & sons



023 9226 2447



Waterlooville@fox-and-sons.co.uk



81B London Road, WATERLOOVILLE,
Hampshire, PO7 7ES



fox-and-sons.co.uk