



Pipits Close, Havant PO9 3FB

welcome to

Pipits Close, Havant

VACANT PROPERTY - NO FORWARD CHAIN - this link-detached property offers a lounge, kitchen/diner and cloakroom to the ground floor, with three good size bedrooms, the master with en-suite and the family bathroom to the first floor. The property also benefits from off road parking and a garage.

Entrance Hall

Laminate floor, radiator. Doors to WC, kitchen/diner and lounge.

Cloakroom

Double glazed window to front aspect. Low level WC, pedestal wash hand basin, radiator.

Lounge

15' 6" x 12' 8" (4.72m x 3.86m)

Double glazed windows and door leading to rear garden. Under stairs storage, two radiators, laminate flooring.

Kitchen / Diner

14' 11" x 8' 6" max (4.55m x 2.59m max)

Double glazed windows to front and side aspects. Range of wall and base units with work surface over, incorporating one and a half bowl sink unit with mixer tap over. Built in electric oven and gas hob with extractor hood over, space for washing machine, built in fridge/freezer. Radiator.

First Floor Landing

Storage cupboard, laminate flooring, radiator. Access to loft space.

Bedroom One

13' 9" x 8' 9" (4.19m x 2.67m)

Double glazed window to rear aspect. Laminate flooring, radiator.

En-Suite

Double glazed window to side aspect. Walk-in shower, low level WC and pedestal wash hand basin. Vinyl flooring, radiator.

Bedroom Two

10' 4" x 8' 9" (3.15m x 2.67m)

Double glazed window to front aspect. Laminate flooring, radiator.

Bedroom Three

10' 1" x 6' 5" (3.07m x 1.96m)

Double glazed window to rear aspect. Laminate flooring, radiator.

Bathroom

Double glazed window to front aspect. Suite comprising panel enclosed bath with shower attachment, low level WC and pedestal wash hand basin. Laminate flooring, radiator.

Outside

Front

Driveway, providing off road parking, leading to garage. Electric car charging point.

Garage

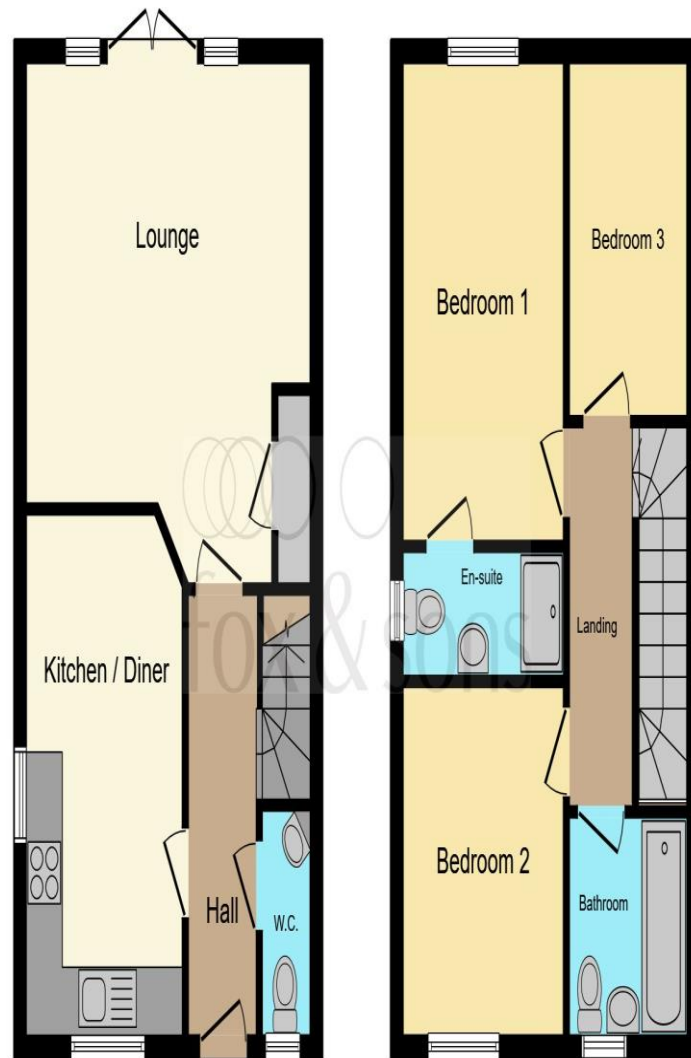
19' 3" x 9' 9" (5.87m x 2.97m)

Up and over door with power and light.

Rear Garden

Laid to lawn and patio with mature trees and personal door to garage.

Agents Note: We have been unable to verify material information that relates to this property. We ask that buyers make their own enquiries and satisfy themselves in regards to any specific requirements before proceeding.



Ground Floor

First Floor

Total floor area 81.4 m² (876 sq.ft.) approx

This floor plan is for illustrative purposes only. It is not drawn to scale. Any measurements, floor areas (including any total floor area), openings and orientation are approximate. No details are guaranteed, they cannot be relied upon for any purpose and they do not form part of any agreement. No liability is taken for any error, omission or misstatement. A party must rely upon its own inspection(s). Powered by www.focalagent.com



welcome to
Pipits Close,
Havant

- Vacant - No Forward Chain
- Link Detached House
- Three Bedrooms - Master with En-Suite
- Spacious Kitchen/Diner
- Garage & Off Road Parking

Tenure: Leasehold EPC Rating: B
Council Tax Band: D

£350,000



check out more properties at fox-and-sons.co.uk



Property Ref:
WLV109246 - 0002

1. MONEY LAUNDERING REGULATIONS Intending purchasers will be asked to produce identification documentation at a later stage and we would ask for your co-operation in order that there is no delay in agreeing the sale. 2. These particulars do not constitute part or all of an offer or contract. 3. The measurements indicated are supplied for guidance only and as such must be considered incorrect. Potential buyers are advised to recheck measurements before committing to any expense. 4. We have not tested any apparatus, equipment, fixtures or services and it is in the buyers interest to check the working condition of any appliances. 5. Where an EPC, or a Home Report (Scotland only) is held for this property, it is available for inspection at the branch by appointment. If you require a printed version of a Home Report, you will need to pay a reasonable production charge reflecting printing and other costs. 6. We are not able to offer an opinion either written or verbal on the content of these reports and this must be obtained from your legal representative. 7. Whilst we take care in preparing these reports, a buyer should ensure that his/her legal representative confirms as soon as possible all matters relating to title including the extent and boundaries of the property and other important matters before exchange of contracts.

Fox & Sons is a trading name of Sequence (UK) Limited which is registered in England and Wales under company number 4268443, Registered Office is Cumbria House, 16-20 Hockliffe Street, Leighton Buzzard, Bedfordshire, LU7 1GN. VAT Registration Number is 500 2481 05.



023 9226 2447



Waterlooville@fox-and-sons.co.uk



81B London Road, WATERLOOVILLE,
Hampshire, PO7 7ES



fox-and-sons.co.uk