



Dukes Close, Petersfield GU32 3QZ

welcome to

Dukes Close, Petersfield

Tucked away in a quiet cul-de-sac on the western edge of Petersfield, this well-maintained two-bedroom mid-terrace house offers an ideal opportunity for first-time buyers or those looking to downsize. Available on a 75% shared ownership basis at £240,000,

Entrance Hall

Via front door. Stairs leading to first floor.

Kitchen

11' 6" x 5' 10" (3.51m x 1.78m)

Double glazed window to front aspect. Tiled to principal areas. Range of wall and base units with work surface over, incorporating one and a half bowl sink unit with mixer tap over. Space for oven and hob with extractor hood over, space for washing machine, space for upright fridge/freezer.

Lounge

13' 1" x 11' 9" (3.99m x 3.58m)

Door from hallway, double glazed sliding patio door leading to conservatory. Laminate floor, radiator.

Conservatory

11' 9" x 7' 9" (3.58m x 2.36m)

UPVC and double glazed with double glazed doors leading to rear garden.

First Floor Landing

Bedroom One

11' 9" x 8' 9" (3.58m x 2.67m)

Double glazed window to rear aspect. Carpet floor, radiator.

Bedroom Two

11' 2" x 9' 3" (3.40m x 2.82m)

Two double glazed windows to front aspect. Laminate floor, radiator. Two built in high level cupboards.

Bathroom

Suite comprising panel enclosed bath with shower over, low level WC with push button flush and wash hand basin over vanity unit. Radiator.

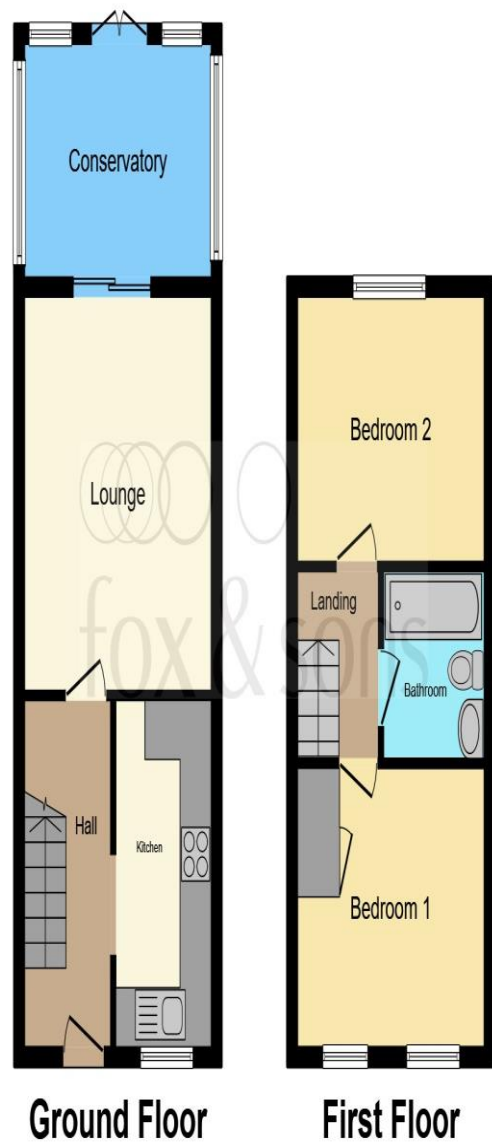
Outside

Front

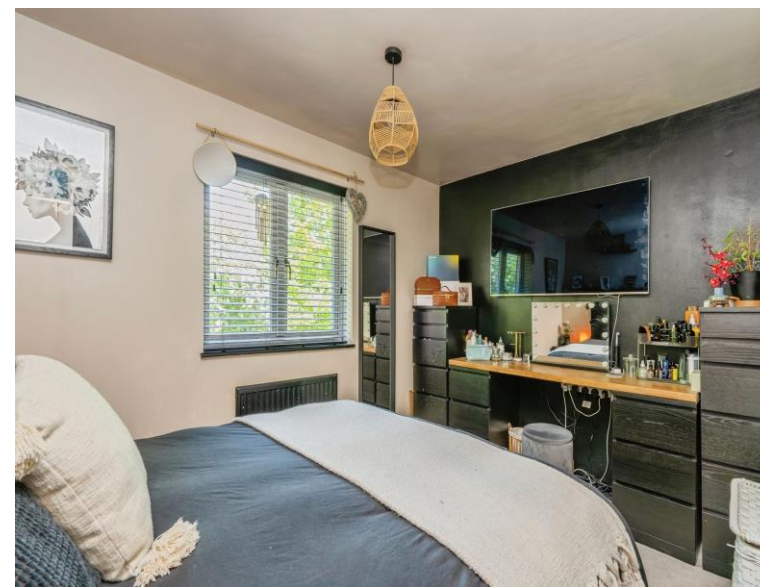
To the front of the property is a pathway leading to the front door with shrubs either side.

Rear Garden

The rear garden enclosed by panel fencing. Laid to patio with a raised flower bed, shed and a gravelled seating area to the rear end.



This floor plan is for illustrative purposes only. It is not drawn to scale. Any measurements, floor areas (including any total floor area), openings and orientation are approximate. No details are guaranteed, they cannot be relied upon for any purpose and they do not form part of any agreement. No liability is taken for any error, omission or misstatement. A party must rely upon its own inspection(s). Powered by www.focalagent.com



welcome to
Dukes Close,
Petersfield

- Shared Ownership 75/25
- Two Bedroom Mid Terraced House
- Modern Kitchen
- Low Maintenance Rear Garden
- Close to Petersfield Town Centre

Tenure: Leasehold EPC Rating: C
Council Tax Band: C Service Charge: Ask Agent
Ground Rent: Ask Agent

This is a Leasehold property with details as follows; Term of Lease 125 years from 31 Oct 1991.
Should you require further information please contact the branch. Please Note additional fees could be incurred for items such as Leasehold packs.

£240,000



view this property online fox-and-sons.co.uk/Property/WLV109223



Property Ref:
WLV109223 - 0002

1. MONEY LAUNDERING REGULATIONS Intending purchasers will be asked to produce identification documentation at a later stage and we would ask for your co-operation in order that there is no delay in agreeing the sale. 2. These particulars do not constitute part or all of an offer or contract. 3. The measurements indicated are supplied for guidance only and as such must be considered incorrect. Potential buyers are advised to recheck measurements before committing to any expense. 4. We have not tested any apparatus, equipment, fixtures or services and it is in the buyers interest to check the working condition of any appliances. 5. Where an EPC, or a Home Report (Scotland only) is held for this property, it is available for inspection at the branch by appointment. If you require a printed version of a Home Report, you will need to pay a reasonable production charge reflecting printing and other costs. 6. We are not able to offer an opinion either written or verbal on the content of these reports and this must be obtained from your legal representative. 7. Whilst we take care in preparing these reports, a buyer should ensure that his/her legal representative confirms as soon as possible all matters relating to title including the extent and boundaries of the property and other important matters before exchange of contracts.

Fox & Sons is a trading name of Sequence (UK) Limited which is registered in England and Wales under company number 4268443, Registered Office is Cumbria House, 16-20 Hockliffe Street, Leighton Buzzard, Bedfordshire, LU7 1GN. VAT Registration Number is 500 2481 05.

fox & sons



023 9226 2447



Waterlooville@fox-and-sons.co.uk



81B London Road, WATERLOOVILLE,
Hampshire, PO7 7ES



fox-and-sons.co.uk