



**Victoria Road North,SOUTHSEA PO5 1PP**

***welcome to***

**Victoria Road North, SOUTHSEA**

One bedroom ground floor apartment, with north west enclosed garden. Must see apartment, call us today to view!





Fox & Sons welcome to the market this one bedroom apartment with an enclosed garden. This property is a must see. Modern throughout with open plan kitchen and living. This apartment is great for a first time home buyer, or for investment. Close to local amenities and local transport links. Call us today to view!

### **Entrance Hall**

### **Study**

20' 11" x 6' 7" ( 6.38m x 2.01m )

### **Kitchen/Living Room**

14' x 11' 6" ( 4.27m x 3.51m )

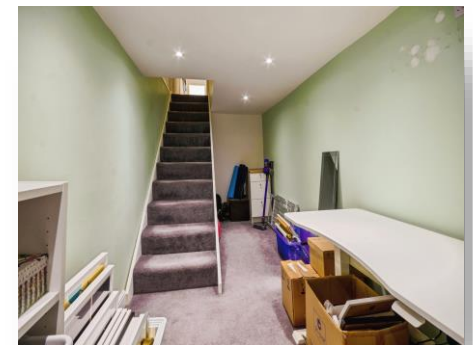
### **Utility Room**

7' 9" x 4' 2" ( 2.36m x 1.27m )

### **Bedroom One**

9' 2" x 8' ( 2.79m x 2.44m )

### **Bathroom**



***check out more properties at*** [fox-and-sons.co.uk](http://fox-and-sons.co.uk)



welcome to

## Victoria Road North, SOUTHSEA

- ONE BEDROOM GROUND FLOOR APARTMENT
- OPEN PLAN LIVING
- MODERN THROUGHOUT
- HEART OF SOUTHSEA
- CLOSE TO LOCAL AMENITIES

Tenure: Leasehold EPC Rating: E

Council Tax Band: A Service Charge: 1596.00

Ground Rent: 300.00

This is a Leasehold property with details as follows; Term of Lease 125 years from 01 Jan 1992. Should you require further information please contact the branch. Please Note additional fees could be incurred for items such as Leasehold packs.

# £175,000



Please note the marker reflects the postcode not the actual property

check out more properties at [fox-and-sons.co.uk](https://fox-and-sons.co.uk)



Property Ref:  
SOS106125 - 0002

1. MONEY LAUNDERING REGULATIONS Intending purchasers will be asked to produce identification documentation at a later stage and we would ask for your co-operation in order that there is no delay in agreeing the sale. 2. These particulars do not constitute part or all of an offer or contract. 3. The measurements indicated are supplied for guidance only and as such must be considered incorrect. Potential buyers are advised to recheck measurements before committing to any expense. 4. We have not tested any apparatus, equipment, fixtures or services and it is in the buyers interest to check the working condition of any appliances. 5. Where an EPC, or a Home Report (Scotland only) is held for this property, it is available for inspection at the branch by appointment. If you require a printed version of a Home Report, you will need to pay a reasonable production charge reflecting printing and other costs. 6. We are not able to offer an opinion either written or verbal on the content of these reports and this must be obtained from your legal representative. 7. Whilst we take care in preparing these reports, a buyer should ensure that his/her legal representative confirms as soon as possible all matters relating to title including the extent and boundaries of the property and other important matters before exchange of contracts.

**Not for marketing purposes INTERNAL USE ONLY**



**023 9229 3100**



[Southsea@fox-and-sons.co.uk](mailto:Southsea@fox-and-sons.co.uk)



65 Osborne Road, SOUTHSEA, Hampshire, PO5 3LS



**[fox-and-sons.co.uk](https://fox-and-sons.co.uk)**