

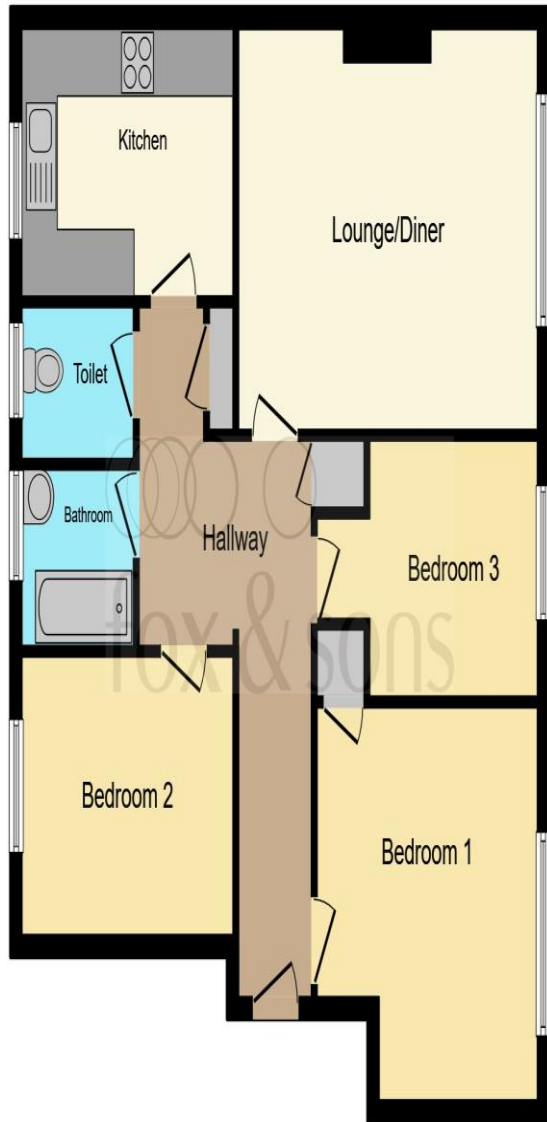


Broom Square, Southsea PO4 8LP

welcome to
Broom Square, Southsea

We are pleased to offer for sale this top floor apartment offering three bedrooms and is well presented.





Lounge

16' 10" x 11' 10" into recess (5.13m x 3.61m into recess)

Kitchen

11' 11" max x 7' 9" max (3.63m max x 2.36m max)

Bedroom One

13' 9" x 8' 3" (4.19m x 2.51m)

Bedroom Two

13' 6" x 9' (4.11m x 2.74m)

Bedroom Three

9' 4" x 7' 9" (2.84m x 2.36m)

Bathroom

5' 10" x 5' 2" (1.78m x 1.57m)

Separate Wc

This floor plan is for illustrative purposes only. It is not drawn to scale. Any measurements, floor areas (including any total floor area), openings and orientation are approximate. No details are guaranteed, they cannot be relied upon for any purpose and they do not form part of any agreement. No liability is taken for any error, omission or misstatement. A party must rely upon its own inspection(s). Powered by www.focalagent.com

welcome to

Broom Square, Southsea

- No Onward Chain
- Three Spacious Bedrooms
- Well Presented Throughout
- Bicycle Store
- Top Floor Apartment

Tenure: Leasehold EPC Rating: D

This is a Leasehold property with details as follows; Term of Lease 125 years from 05 Oct 1981. Should you require further information please contact the branch. Please Note additional fees could be incurred for items such as Leasehold packs.

offers over

£180,000



Please note the marker reflects the postcode not the actual property

check out more properties at fox-and-sons.co.uk



Property Ref:
SOS105510 - 0002

1. MONEY LAUNDERING REGULATIONS Intending purchasers will be asked to produce identification documentation at a later stage and we would ask for your co-operation in order that there is no delay in agreeing the sale. 2. These particulars do not constitute part or all of an offer or contract. 3. The measurements indicated are supplied for guidance only and as such must be considered incorrect. Potential buyers are advised to recheck measurements before committing to any expense. 4. We have not tested any apparatus, equipment, fixtures or services and it is in the buyers interest to check the working condition of any appliances. 5. Where an EPC, or a Home Report (Scotland only) is held for this property, it is available for inspection at the branch by appointment. If you require a printed version of a Home Report, you will need to pay a reasonable production charge reflecting printing and other costs. 6. We are not able to offer an opinion either written or verbal on the content of these reports and this must be obtained from your legal representative. 7. Whilst we take care in preparing these reports, a buyer should ensure that his/her legal representative confirms as soon as possible all matters relating to title including the extent and boundaries of the property and other important matters before exchange of contracts.

Not for marketing purposes INTERNAL USE ONLY



023 9229 3100



Southsea@fox-and-sons.co.uk



65 Osborne Road, SOUTHSEA, Hampshire, PO5 3LS



fox-and-sons.co.uk