



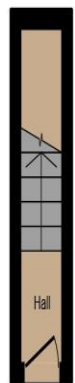
**Hazel Court Goldsmith Avenue, Portsmouth Southsea PO4 8QU**

**welcome to**

**Hazel Court Goldsmith Avenue, Portsmouth Southsea**

We are delighted to offer for sale this two-bedroom duplex apartment being offered with two parking spaces and no forward chain.

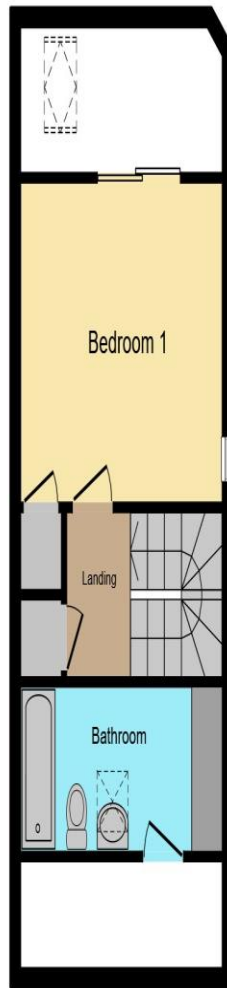




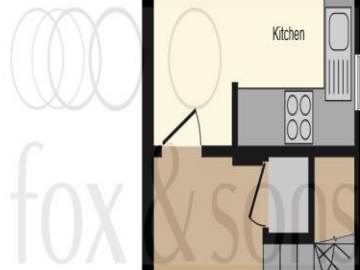
**Ground Floor**



**First Floor**



**Second Floor**



Total floor area 69.6 m<sup>2</sup> (749 sq.ft.) approx

This floor plan is for illustrative purposes only. It is not drawn to scale. Any measurements, floor areas (including any total floor area), openings and orientation are approximate. No details are guaranteed, they cannot be relied upon for any purpose and they do not form part of any agreement. No liability is taken for any error, omission or misstatement. A party must rely upon its own inspection(s). Powered by [www.focalagent.com](http://www.focalagent.com)



**Front Door**

**Two Allocated Parking Spaces**

**Inner Lobby**

**Stairs To Landing**

**Lounge/Dining Room**

15' 11" x 12' 11" ( 4.85m x 3.94m )

**Kitchen**

7' 8" x 5' 5" ( 2.34m x 1.65m )

**Bedroom One**

12' 11" Max x 10' 4" Max ( 3.94m Max x 3.15m Max )

**Bedroom Two**

9' 6" x 9' 1" ( 2.90m x 2.77m )

**Second Floor Landing**

**Bathroom**

**Outside**

welcome to

## Hazel Court Goldsmith Avenue, Portsmouth Southsea

- Two Double Bedroom
- Duplex Apartment
- Mezzanine Master Bedroom
- Two Allocated Parking Spaces
- Open Planned Lounge/Diner

Tenure: Leasehold EPC Rating: D

This is a Leasehold property. We are awaiting further details about the Term of the lease. For further information please contact the branch. Please note additional fees could be incurred for items such as Leasehold packs.

guide price

**£200,000**



Please note the marker reflects the postcode not the actual property

check out more properties at [fox-and-sons.co.uk](https://fox-and-sons.co.uk)



Property Ref:  
SOS105736 - 0003

1. MONEY LAUNDERING REGULATIONS Intending purchasers will be asked to produce identification documentation at a later stage and we would ask for your co-operation in order that there is no delay in agreeing the sale. 2. These particulars do not constitute part or all of an offer or contract. 3. The measurements indicated are supplied for guidance only and as such must be considered incorrect. Potential buyers are advised to recheck measurements before committing to any expense. 4. We have not tested any apparatus, equipment, fixtures or services and it is in the buyers interest to check the working condition of any appliances. 5. Where an EPC, or a Home Report (Scotland only) is held for this property, it is available for inspection at the branch by appointment. If you require a printed version of a Home Report, you will need to pay a reasonable production charge reflecting printing and other costs. 6. We are not able to offer an opinion either written or verbal on the content of these reports and this must be obtained from your legal representative. 7. Whilst we take care in preparing these reports, a buyer should ensure that his/her legal representative confirms as soon as possible all matters relating to title including the extent and boundaries of the property and other important matters before exchange of contracts.

**Not for marketing purposes INTERNAL USE ONLY**



**023 9229 3100**



[Southsea@fox-and-sons.co.uk](mailto:Southsea@fox-and-sons.co.uk)



65 Osborne Road, SOUTHSEA, Hampshire, PO5 3LS



[fox-and-sons.co.uk](https://fox-and-sons.co.uk)