



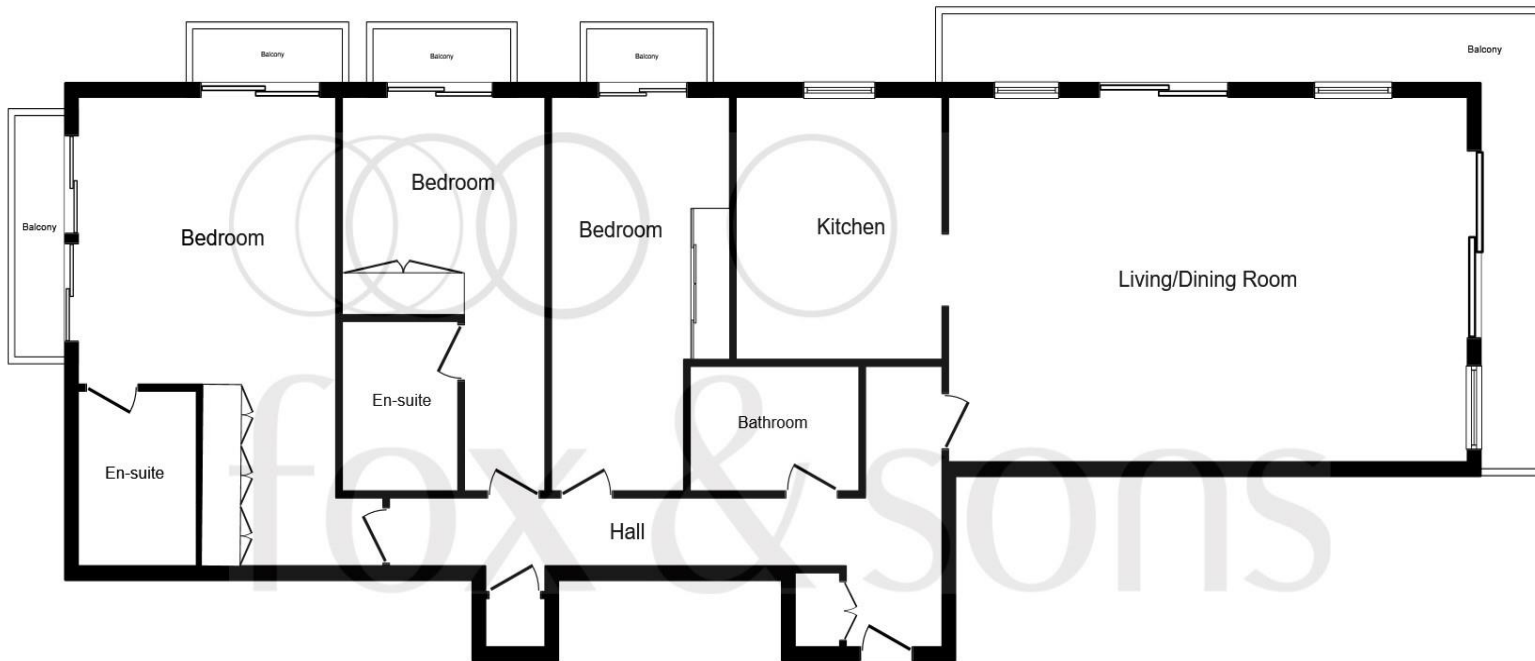
Sundowner, Channel Way, Ocean Village, Southampton, SO14 3JB

welcome to

Sundowner

A magnificent three bedroom Penthouse in Sundowner enjoys a wonderful marina fronting position with some of the finest panoramic views Southampton has to offer, and a wealth of beautifully presented accommodation expanding over 1625 sqft with five balconies and two secure parking spaces.





Floor Plan

Entrance Hall

Living / Dining & Kitchen

37' 9" x 16' 8" (11.51m x 5.08m)

Bedroom One

13' 7" x 13' (4.14m x 3.96m)

En-Suite

Bedroom Two

10' 6" x 10' 3" (3.20m x 3.12m)

En-Suite

Bedroom Three

19' 3" x 9' (5.87m x 2.74m)

Bathroom

Five Private Balconies

Two Under Croft Parking Spaces

Additional Information

Leasehold Term - 100 Years Remaining
 Service Charge - £2742 1/2 yearly
 Ground Rent - £250 pa

This floor plan is for illustrative purposes only. It is not drawn to scale. Any measurements, floor areas (including any total floor area), openings and orientation are approximate. No details are guaranteed, they cannot be relied upon for any purpose and they do not form part of any agreement. No liability is taken for any error, omission or misstatement. A party must rely upon its own inspection(s). Plan produced for Fox & Sons Powered by www.focalagent.com

welcome to

Sundowner

- Magnificent Position with Stunning Views of the Marina
- 1625sqft Penthouse Apartment
- Three Bedrooms Three Bathrooms
- Open Plan Dual Aspect Living Area
- Beautifully Appointed Kitchen
- Five Balconies Offering Amazing Views
- Secure Under Croft Parking x 2
- No forward Chain

Tenure: Leasehold EPC Rating: D

£725,000 guide price



Please note the marker reflects the postcode not the actual property

check out more properties at fox-and-sons.co.uk

see all our properties on zoopla.co.uk | rightmove.co.uk | fox-and-sons.co.uk

We currently hold lease details as displayed above, should you require further information please contact the branch. Please note additional fees could be incurred for items such as leasehold packs.



Property Ref:
SOU113245 - 0006

1. MONEY LAUNDERING REGULATIONS Intending purchasers will be asked to produce identification documentation at a later stage and we would ask for your co-operation in order that there is no delay in agreeing the sale. 2. These particulars do not constitute part or all of an offer or contract. 3. The measurements indicated are supplied for guidance only and as such must be considered incorrect. Potential buyers are advised to recheck measurements before committing to any expense. 4. We have not tested any apparatus, equipment, fixtures or services and it is in the buyers interest to check the working condition of any appliances. 5. Where an EPC, or a Home Report (Scotland only) is held for this property, it is available for inspection at the branch by appointment. If you require a printed version of a Home Report, you will need to pay a reasonable production charge reflecting printing and other costs. 6. We are not able to offer an opinion either written or verbal on the content of these reports and this must be obtained from your legal representative. 7. Whilst we take care in preparing these reports, a buyer should ensure that his/her legal representative confirms as soon as possible all matters relating to title including the extent and boundaries of the property and other important matters before exchange of contracts.


fox & sons



02380 225155



Southampton@fox-and-sons.co.uk



32 - 34 London Road, Southampton,
Hampshire, SO15 2AG



fox-and-sons.co.uk