



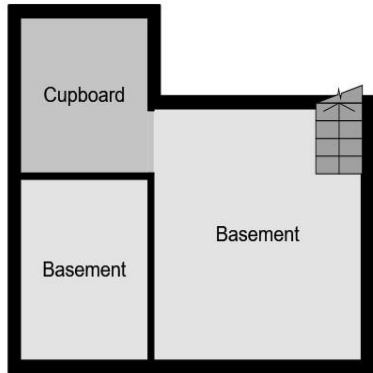
Belmont Road, Southampton SO17 2GE

welcome to

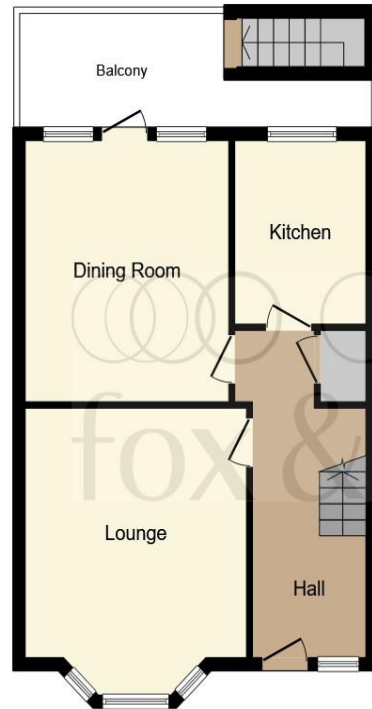
Belmont Road, Southampton

Occupying a prime position within the desirable Portswood area of the City, lies this substantial three bedroom semi detached house that offers a wealth of spacious accommodation requiring modernisation and improvement, established gardens, driveway, cellar and garage.





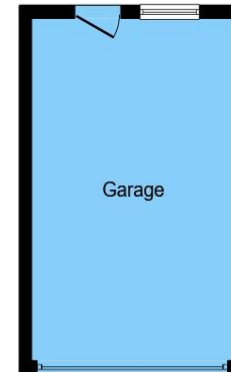
Basement



Ground Floor



First Floor



Garage

Lounge
13' 2" x 11' 4" (4.01m x 3.45m)

Dining Room
13' 5" x 12' 5" (4.09m x 3.78m)

Kitchen
7' 5" x 9' 4" (2.26m x 2.84m)

Bedroom 1
12' 5" x 13' 5" Max (3.78m x 4.09m Max)

Bedroom 2
12' 6" x 13' 5" (3.81m x 4.09m)

Bedroom 3
9' 4" x 7' 4" (2.84m x 2.24m)

Bathroom

Garage
17' 5" x 9' 9" (5.31m x 2.97m)

Cellar
13' 5" x 11' 6" (4.09m x 3.51m)

Cellar 2
7' 6" x 9' 7" (2.29m x 2.92m)

Total floor area 146.2 sq.m. (1,573 sq.ft.) approx

This floorplan is for illustrative purposes only and is not drawn to scale. Measurements, floor-areas, openings and orientations are approximate. They should not be relied upon for any purpose and do not form any part of an agreement. No liability is taken for any error or mis-statement. All parties must rely on their own inspections.

welcome to

Belmont Road, Southampton

- Well Proportioned Semi-Detached House
- In Need Of Modernisation & Improvement
- Two Reception Rooms
- Kitchen
- Impressive Rear Garden

Tenure: Freehold EPC Rating: D

offers in excess of

£375,000



Please note the marker reflects the postcode not the actual property

view this property online fox-and-sons.co.uk/Property/SOU115511



Property Ref:
SOU115511 - 0003

1. MONEY LAUNDERING REGULATIONS Intending purchasers will be asked to produce identification documentation at a later stage and we would ask for your co-operation in order that there is no delay in agreeing the sale. 2. These particulars do not constitute part or all of an offer or contract. 3. The measurements indicated are supplied for guidance only and as such must be considered incorrect. Potential buyers are advised to recheck measurements before committing to any expense. 4. We have not tested any apparatus, equipment, fixtures or services and it is in the buyers interest to check the working condition of any appliances. 5. Where an EPC, or a Home Report (Scotland only) is held for this property, it is available for inspection at the branch by appointment. If you require a printed version of a Home Report, you will need to pay a reasonable production charge reflecting printing and other costs. 6. We are not able to offer an opinion either written or verbal on the content of these reports and this must be obtained from your legal representative. 7. Whilst we take care in preparing these reports, a buyer should ensure that his/her legal representative confirms as soon as possible all matters relating to title including the extent and boundaries of the property and other important matters before exchange of contracts.


fox & sons



02380 225155



Southampton@fox-and-sons.co.uk



32 - 34 London Road, SOUTHAMPTON,
Hampshire, SO15 2AG



fox-and-sons.co.uk