



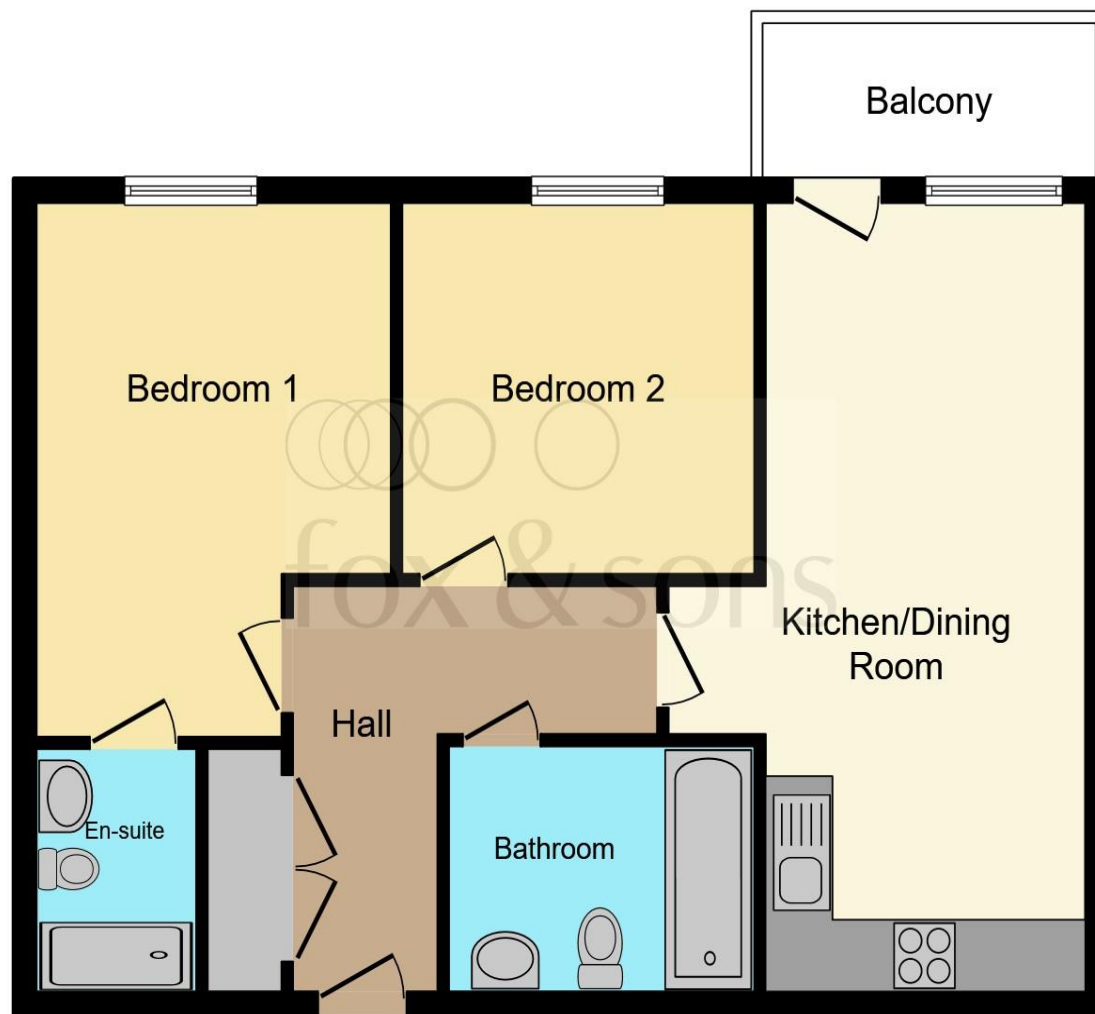
**Television House, Meridian Way Southampton SO14 0FS**

**welcome to**

## **Television House, Meridian Way Southampton**

Boasting 2 generous bedrooms with an en-suite to the Master, a separate bathroom and integrated appliances to the kitchen. The property also benefits from no chain and an allocated parking space.





## Agents Note

### Entrance Hall

### Kitchen / Living Room

21' 1" max x 11' 3" max ( 6.43m max x 3.43m max )

### Balcony

### Bedroom Two

10' 3" max x 10' 2" max ( 3.12m max x 3.10m max )

### Bathroom

### Master Bedroom

13' 9" max x 10' 5" max ( 4.19m max x 3.17m max )

### En-Suite

### Additional

This floorplan is for illustrative purposes only and is not drawn to scale. Measurements, floor-areas, openings and orientations are approximate. They should not be relied upon for any purpose and do not form any part of an agreement. No liability is taken for any error or mis-statement. All parties must rely on their own inspections.



welcome to

## Television House, Meridian Way Southampton

- Modern Waterside Apartment
- Two Bedrooms
- Open-Plan Living Room / Modern Fitted Kitchen
- En-Suite to Master
- Family Bathroom

Tenure: Leasehold EPC Rating: B

Council Tax Band: B Service Charge: 1322.04

Ground Rent: 250.00

This is a Leasehold property. We are awaiting further details about the Term of the lease. For further information please contact the branch. Please note additional fees could be incurred for items such as Leasehold packs.

# £255,000



Please note the marker reflects the  
postcode not the actual property

check out more properties at [fox-and-sons.co.uk](https://fox-and-sons.co.uk)



Property Ref:  
SOU115156 - 0013

1. MONEY LAUNDERING REGULATIONS Intending purchasers will be asked to produce identification documentation at a later stage and we would ask for your co-operation in order that there is no delay in agreeing the sale. 2. These particulars do not constitute part or all of an offer or contract. 3. The measurements indicated are supplied for guidance only and as such must be considered incorrect. Potential buyers are advised to recheck measurements before committing to any expense. 4. We have not tested any apparatus, equipment, fixtures or services and it is in the buyers interest to check the working condition of any appliances. 5. Where an EPC, or a Home Report (Scotland only) is held for this property, it is available for inspection at the branch by appointment. If you require a printed version of a Home Report, you will need to pay a reasonable production charge reflecting printing and other costs. 6. We are not able to offer an opinion either written or verbal on the content of these reports and this must be obtained from your legal representative. 7. Whilst we take care in preparing these reports, a buyer should ensure that his/her legal representative confirms as soon as possible all matters relating to title including the extent and boundaries of the property and other important matters before exchange of contracts.

Fox & Sons is a trading name of Sequence (UK) Limited which is registered in England and Wales under company number 4268443, Registered Office is Cumbria House, 16-20 Hockliffe Street, Leighton Buzzard, Bedfordshire, LU7 1GN. VAT Registration Number is 500 2481 05.

fox & sons



**02380 225155**



[Southampton@fox-and-sons.co.uk](mailto:Southampton@fox-and-sons.co.uk)



32 - 34 London Road, SOUTHAMPTON,  
Hampshire, SO15 2AG



**[fox-and-sons.co.uk](https://fox-and-sons.co.uk)**