

CHAPEL GATE

Salisbury





CHAPEL GATE

Salisbury



COUNTRYSIDE
Homes

countrysidepartnerships.com

CHAPEL GATE

Salisbury



This plan has been produced for home identification purposes only and may be subject to change. Please check the details of your chosen plot and house type with the sales consultant. Development layout plan correct at time of going to print.

Vistry Bristol region
Linden House, The Jacobs Building, Berkeley Place, Clifton, Bristol BS8 1EX. Telephone: 01179 304 949

Produced by the Vistry Group Design Studio.

DS11522 / 08.24



COUNTRYSIDE
Homes



THE HADLEIGH

2 bedroom home

countrysidehomes.com



COUNTRYSIDE
Homes

THE HADLEIGH

2 bedroom home



GROUND FLOOR	metres	feet / inches
Kitchen / dining / sitting area	7.48 x 4.35	24' 6" x 14' 3"
Bedroom 1	4.38 x 2.98	14' 4" x 9' 9"
Bedroom 2	3.14 x 2.90	10' 3" x 9' 6"

ovn	oven	ffzs	fridge freezer space
h	hob	cup'd	cupboard
ds	dishwasher space	◀ ▶	measuring points
ws	washing machine space		

The Hadleigh | Chapel Gate |

The floorplan has been produced for illustrative purposes only. Room sizes shown are between arrow points as indicated on plan. The dimensions have tolerances of + or -50mm and should not be used other than for general guidance. If specific dimensions are required, enquiries should be made to the sales consultant. The floor plans shown are not to scale. Measurements are based on the original drawings. Slight variations may occur during construction.

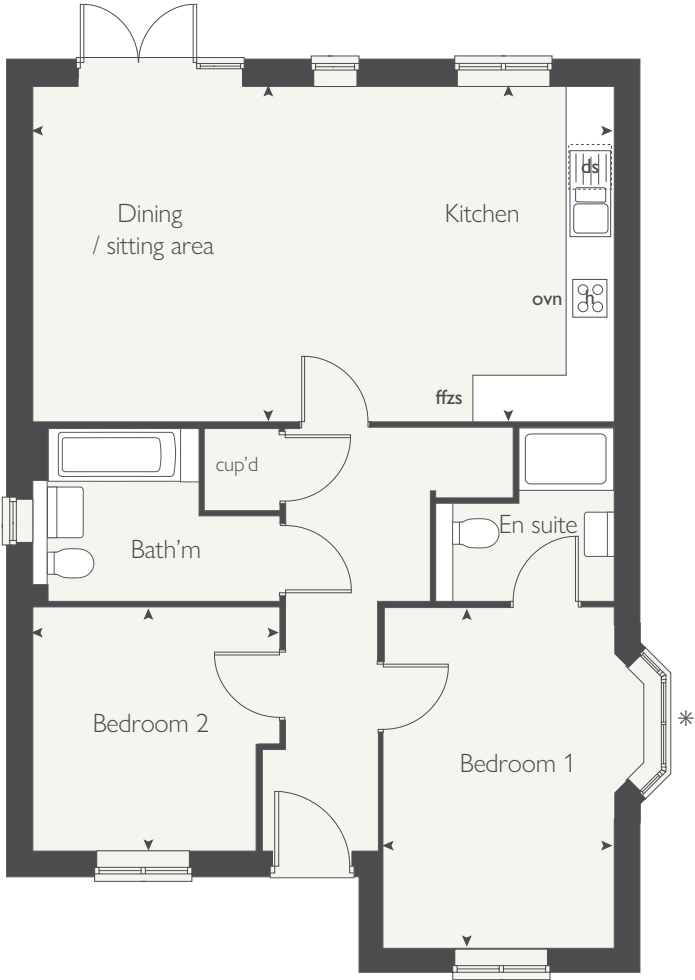
The illustrations shown are computer generated impressions of how the property may look and are indicative only. External details or finishes may vary on individual plots and homes may be built in either detached or attached styles depending on the development layout. Exact specifications, window styles and whether a property is left or right-handed may differ from plot to plot. Please speak to our sales consultant for specific plot details.

* Bay window applies to selected plots only. Please speak to our sales consultant for further details.

Produced by the Vistry Group Design Studio.

DS06706 / 03.24

GROUND FLOOR





THE FLANDERS

2 bedroom home

countrysidehomes.com



COUNTRYSIDE
Homes

THE FLANDERS

2 bedroom home



GROUND FLOOR	metres	feet / inches
Kitchen	3.64 x 3.03	11' 11" x 9' 11"
Dining / sitting area	4.66 x 3.33	15' 3" x 10' 11"
Bedroom 1	4.22 x 3.61	13' 10" x 11' 10"
Bedroom 2	3.61 x 3.43	11' 10" x 11' 3"

ovn	oven	ffzs	fridge freezer space
h	hob	cup'd	cupboard
ds	dishwasher space	◀ ▶	measuring points
ws washing machine space			

The Flanders | Chapel Gate |

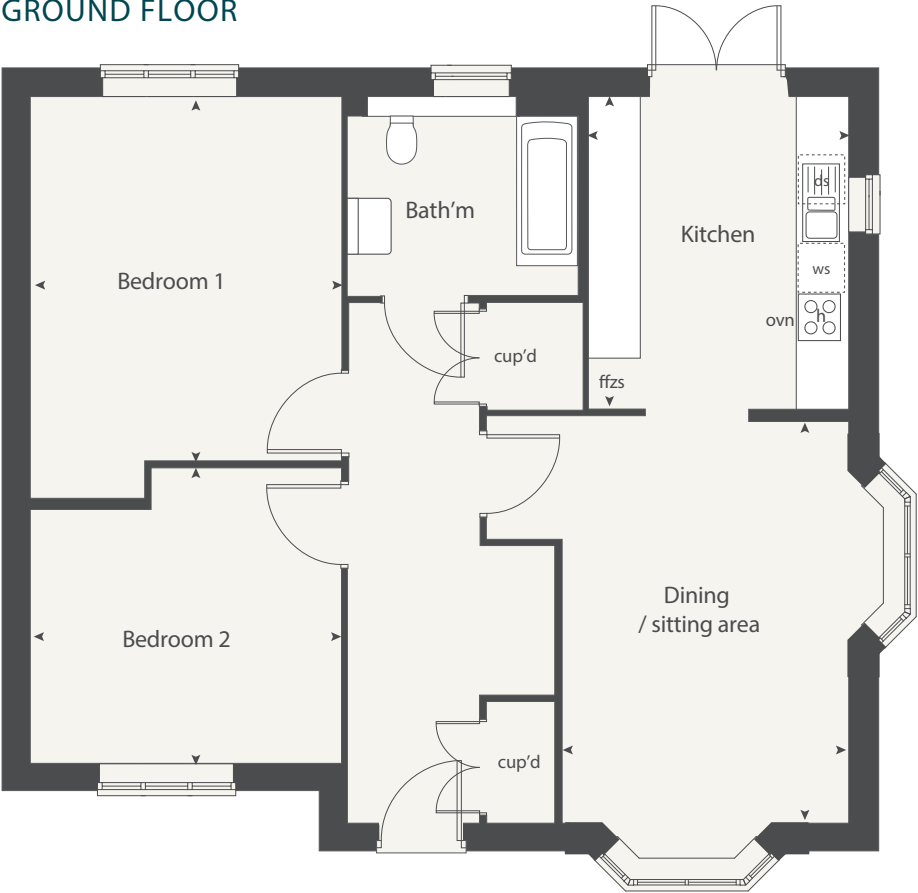
The floorplan has been produced for illustrative purposes only. Room sizes shown are between arrow points as indicated on plan. The dimensions have tolerances of + or -50mm and should not be used other than for general guidance. If specific dimensions are required, enquiries should be made to the sales consultant. The floor plans shown are not to scale. Measurements are based on the original drawings. Slight variations may occur during construction.

The illustrations shown are computer generated impressions of how the property may look and are indicative only. External details or finishes may vary on individual plots and homes may be built in either detached or attached styles depending on the development layout. Exact specifications, window styles and whether a property is left or right-handed may differ from plot to plot. Please speak to our sales consultant for specific plot details.

Produced by the Vistry Group Design Studio.

DS06706 / 03.24

GROUND FLOOR



COUNTRYSIDE
Homes



THE CARTWRIGHT

2 bedroom home



COUNTRYSIDE
Homes

countrysidehomes.com

THE CARTWRIGHT

2 bedroom home



GROUND FLOOR	metres	feet / inches
Kitchen / dining area	4.90 x 2.18	16' 0" x 7' 2"
Living room	4.26 x 3.66	13' 11" x 12' 0"

FIRST FLOOR

Bedroom 1	4.26 x 3.64	13' 11" x 11' 11"
Bedroom 2	4.26 x 2.86	13' 11" x 9' 4"

ovn	oven	ffzs	fridge freezer space
h	hob	cup'd	cupboard
ds	dishwasher space	◀ ▶	measuring points
ws	washing machine space		

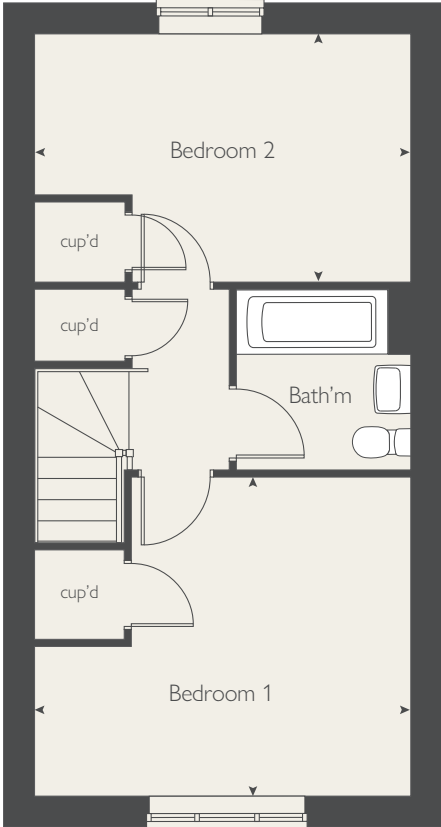
The Cartwright | Chapel Gate |

The floorplan has been produced for illustrative purposes only. Room sizes shown are between arrow points as indicated on plan. The dimensions have tolerances of + or -50mm and should not be used other than for general guidance. If specific dimensions are required, enquiries should be made to the sales consultant. The floor plans shown are not to scale. Measurements are based on the original drawings. Slight variations may occur during construction.

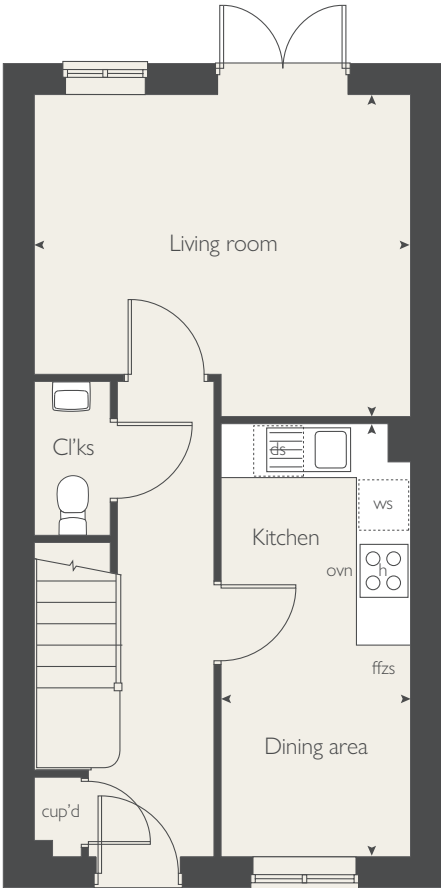
The illustrations shown are computer generated impressions of how the property may look and are indicative only. External details or finishes may vary on individual plots and homes may be built in either detached or attached styles depending on the development layout. Exact specifications, window styles and whether a property is left or right-handed may differ from plot to plot. Please speak to our sales consultant for specific plot details.

Produced by the Vistry Group Design Studio.
DS06706 / 03.24

FIRST FLOOR



GROUND FLOOR





THE COOPER

2 bedroom home

THE COOPER

2 bedroom home



GROUND FLOOR	metres	feet / inches
Kitchen / dining area	5.01 x 2.83	16' 5" x 9' 3"
Living room	4.99 x 3.04	16' 4" x 9' 11"

FIRST FLOOR

Bedroom 1	4.99 x 3.09	16' 4" x 10' 1"
Bedroom 2	4.99 x 3.04	16' 4" x 9' 11"

ovn	oven	ffzs	fridge freezer space
h	hob	cup'd	cupboard
ds	dishwasher space	◀ ▶	measuring points
ws	washing machine space		

The Cooper | Chapel Gate |

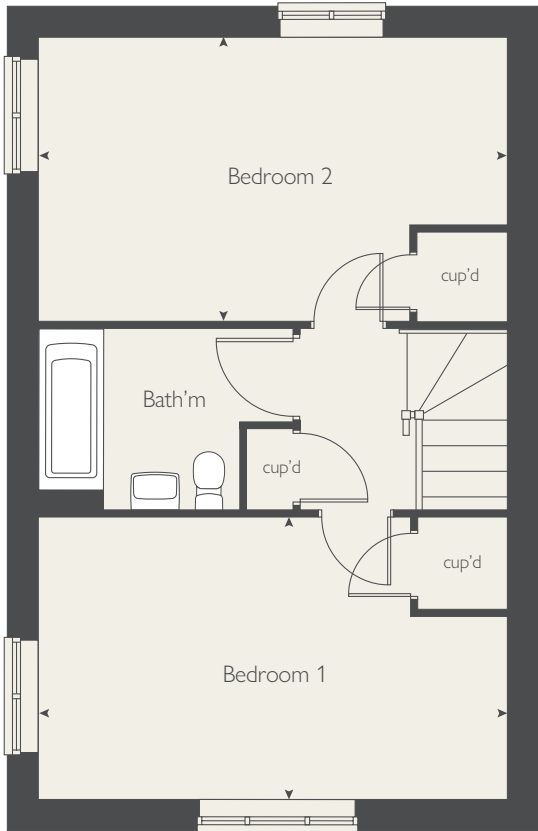
The floorplan has been produced for illustrative purposes only. Room sizes shown are between arrow points as indicated on plan. The dimensions have tolerances of + or -50mm and should not be used other than for general guidance. If specific dimensions are required, enquiries should be made to the sales consultant. The floor plans shown are not to scale. Measurements are based on the original drawings. Slight variations may occur during construction.

The illustrations shown are computer generated impressions of how the property may look and are indicative only. External details or finishes may vary on individual plots and homes may be built in either detached or attached styles depending on the development layout. Exact specifications, window styles and whether a property is left or right-handed may differ from plot to plot. Please speak to our sales consultant for specific plot details.

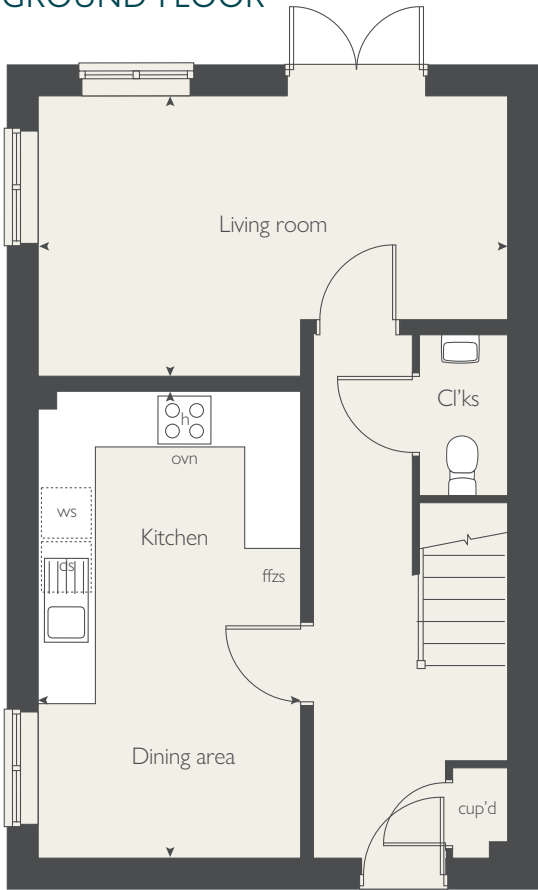
Produced by the Vistry Group Design Studio.

DS06706 / 03.24

FIRST FLOOR



GROUND FLOOR



COUNTRYSIDE
Homes



THE HADLEIGH 1.5

3 bedroom home



COUNTRYSIDE
Homes

countrysidehomes.com

THE HADLEIGH 1.5

3 bedroom home



GROUND FLOOR	metres	feet / inches
Kitchen / dining / sitting area	7.48 x 4.35	24' 6" x 14' 3"
Bedroom 2	4.46 x 2.98	14' 7" x 9' 9"
Bedroom 3	3.14 x 2.90	10' 3" x 9' 6"

FIRST FLOOR	metres	feet / inches
Bedroom 1	5.07 x 3.59	16' 7" x 11' 9"
Study	3.24 x 2.28	10' 7" x 7' 5"

ovn	oven	ffzs	fridge freezer space
h	hob	cup'd	cupboard
ds	dishwasher space	◀ ▶	measuring points
ws	washing machine space		

The Hadleigh 1.5 | Chapel Gate |

The floorplan has been produced for illustrative purposes only. Room sizes shown are between arrow points as indicated on plan. The dimensions have tolerances of + or -50mm and should not be used other than for general guidance. If specific dimensions are required, enquiries should be made to the sales consultant. The floor plans shown are not to scale. Measurements are based on the original drawings. Slight variations may occur during construction.

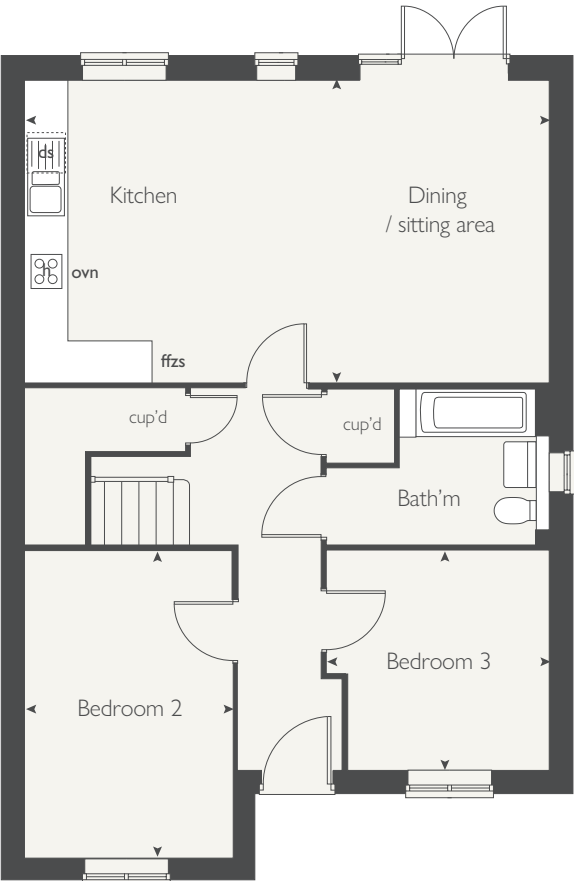
The illustrations shown are computer generated impressions of how the property may look and are indicative only. External details or finishes may vary on individual plots and homes may be built in either detached or attached styles depending on the development layout. Exact specifications, window styles and whether a property is left or right-handed may differ from plot to plot. Please speak to our sales consultant for specific plot details.

Produced by the Vistry Group Design Studio.
DS06706 / 03.24

FIRST FLOOR



GROUND FLOOR





THE HICKSTEAD

3 bedroom home

countrysidehomes.com


COUNTRYSIDE
Homes

THE HICKSTEAD

3 bedroom home



GROUND FLOOR	metres	feet / inches
Kitchen / dining area	5.57 x 3.40	18' 3" x 11' 1"
Sitting room	4.29 x 3.42	14' 0" x 11' 2"

FIRST FLOOR

Bedroom 1	3.40 x 3.25	11' 2" x 10' 7"
Bedroom 2	3.46 x 3.24	11' 4" x 10' 7"
Bedroom 3	3.46 x 2.28	11' 4" x 7' 5"

ovn	oven	ffzs	fridge freezer space
h	hob	cup'd	cupboard
ds	dishwasher space	w	wardrobe
ws	washing machine space	< >	measuring points

The Hickstead | Chapel Gate |

The floorplan has been produced for illustrative purposes only. Room sizes shown are between arrow points as indicated on plan. The dimensions have tolerances of + or -50mm and should not be used other than for general guidance. If specific dimensions are required, enquiries should be made to the sales consultant. The floor plans shown are not to scale. Measurements are based on the original drawings. Slight variations may occur during construction.

The illustrations shown are computer generated impressions of how the property may look and are indicative only. External details or finishes may vary on individual plots and homes may be built in either detached or attached styles depending on the development layout. Exact specifications, window styles and whether a property is left or right-handed may differ from plot to plot. Please speak to our sales consultant for specific plot details.

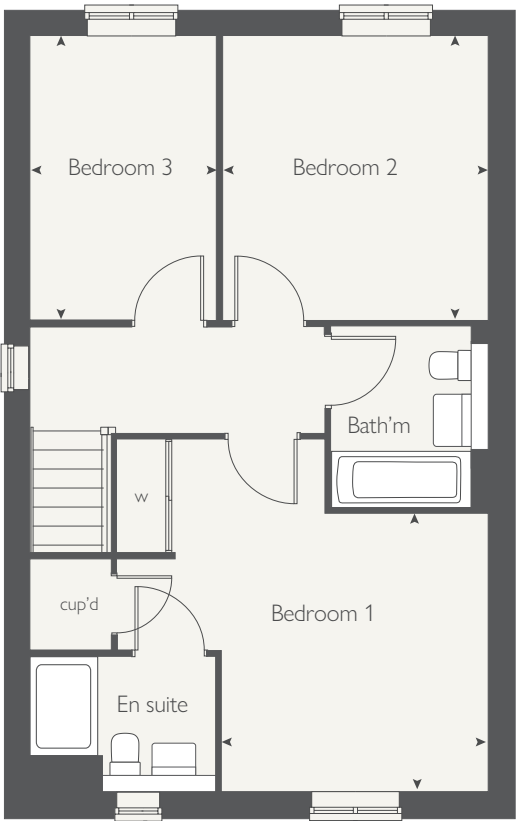
Produced by the Vistry Group Design Studio.

DS06706 / 03.24

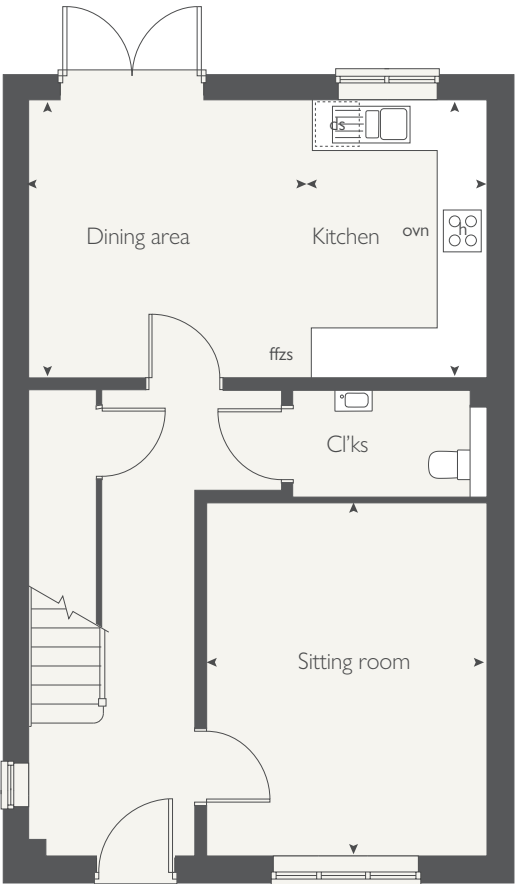


COUNTRYSIDE
Homes

FIRST FLOOR



GROUND FLOOR





THE STONELEIGH

3 bedroom home



COUNTRYSIDE
Homes

countrysidehomes.com

THE STONELEIGH

3 bedroom home



GROUND FLOOR	metres	feet / inches
Kitchen / dining area	5.79 x 3.27	18' 11" x 10' 8"
Living room	5.10 x 3.20	16' 8" x 10' 6"
Snug	3.16 x 2.97	10' 4" x 9' 9"

FIRST FLOOR

Bedroom 1	4.43 x 3.34	14' 6" x 10' 11"
Bedroom 2	5.01 x 2.96	16' 5" x 9' 8"
Bedroom 3	3.27 x 2.75	10' 8" x 9' 0"

ovn	oven	ffzr	fridge freezer
h	hob	cup'd	cupboard
ds	dishwasher space	◀ ▶	measuring points
ws	washing machine space		

The Stoneleigh | Chapel Gate |

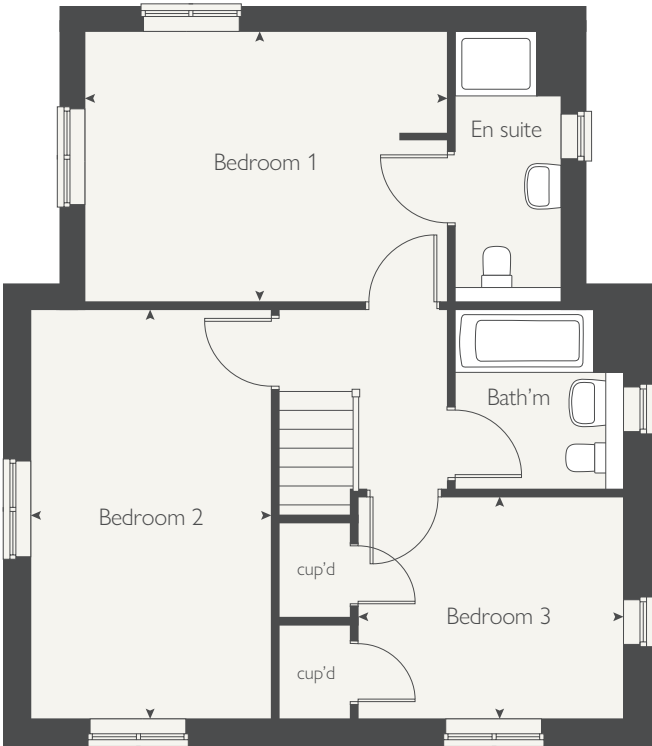
The floorplan has been produced for illustrative purposes only. Room sizes shown are between arrow points as indicated on plan. The dimensions have tolerances of + or -50mm and should not be used other than for general guidance. If specific dimensions are required, enquiries should be made to the sales consultant. The floor plans shown are not to scale. Measurements are based on the original drawings. Slight variations may occur during construction.

The illustrations shown are computer generated impressions of how the property may look and are indicative only. External details or finishes may vary on individual plots and homes may be built in either detached or attached styles depending on the development layout. Exact specifications, window styles and whether a property is left or right-handed may differ from plot to plot. Please speak to our sales consultant for specific plot details.

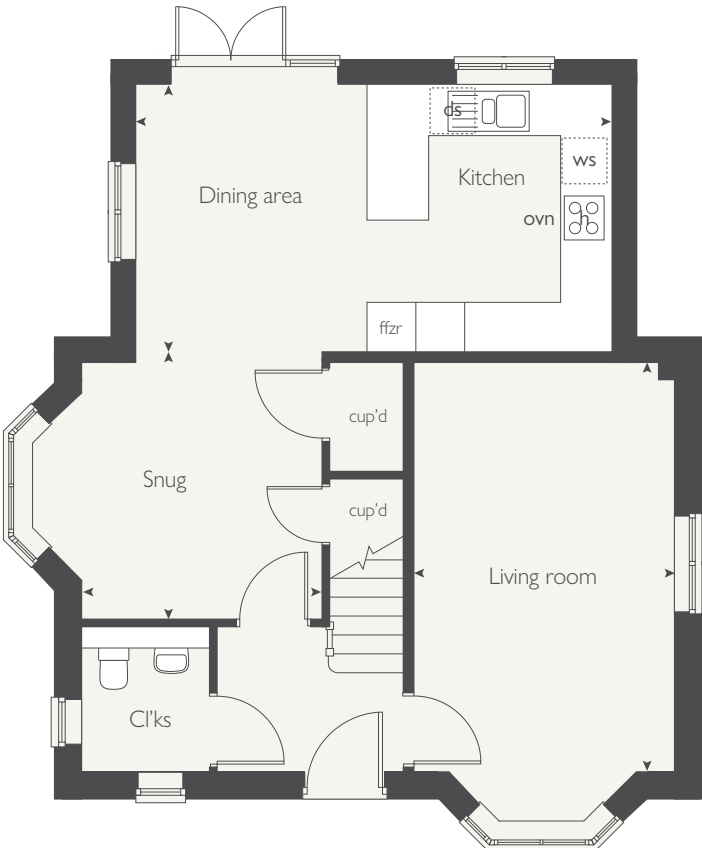
Produced by the Vistry Group Design Studio.

DS06706 / 03.24

FIRST FLOOR



GROUND FLOOR



COUNTRYSIDE
Homes



THE BECKET

3 bedroom home



COUNTRYSIDE
Homes

THE BECKET

3 bedroom home



GROUND FLOOR	metres	feet / inches
Kitchen / dining area	5.68 x 2.99	18' 7" x 9' 9"
Living room	5.68 x 3.40	18' 7" x 11' 2"

FIRST FLOOR

Bedroom 1	3.46x 3.42	11' 4" x 11' 2"
Bedroom 2	3.43 x 3.06	11' 3" x 10' 0"
Bedroom 3	3.04 x 2.57	9' 11" x 8' 5"

ovn	oven	ffzs	fridge freezer space
h	hob	cup'd	cupboard
ds	dishwasher space	◀ ▶	measuring points
ws	washing machine space		

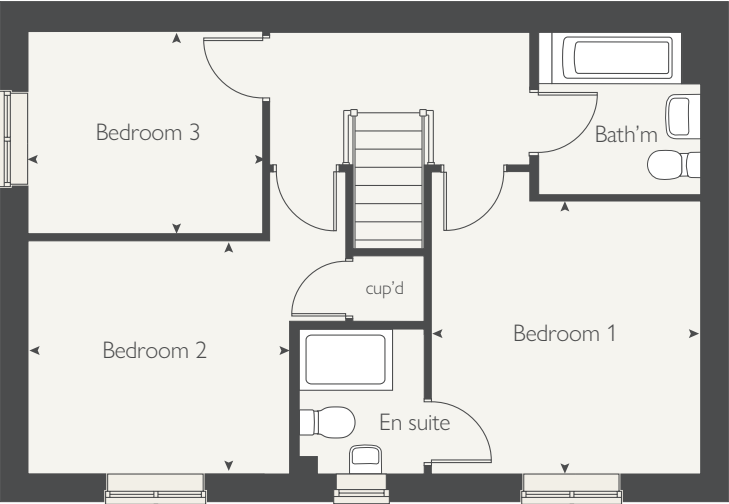
The Becket | Chapel Gate |

The floorplan has been produced for illustrative purposes only. Room sizes shown are between arrow points as indicated on plan. The dimensions have tolerances of + or -50mm and should not be used other than for general guidance. If specific dimensions are required, enquiries should be made to the sales consultant. The floor plans shown are not to scale. Measurements are based on the original drawings. Slight variations may occur during construction.

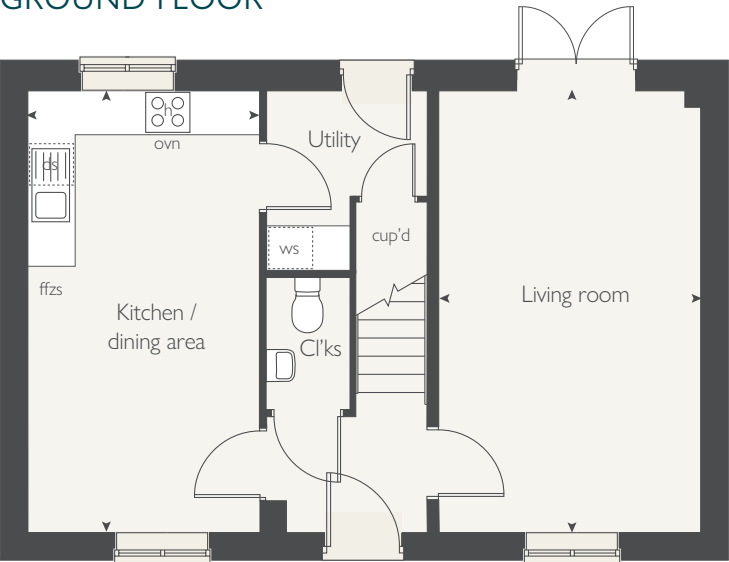
The illustrations shown are computer generated impressions of how the property may look and are indicative only. External details or finishes may vary on individual plots and homes may be built in either detached or attached styles depending on the development layout. Exact specifications, window styles and whether a property is left or right-handed may differ from plot to plot. Please speak to our sales consultant for specific plot details.

Produced by the Vistry Group Design Studio.
DS06706 / 05.24

FIRST FLOOR



GROUND FLOOR



COUNTRYSIDE
Homes



THE MYLNE

3 bedroom home

countrysidehomes.com


COUNTRYSIDE
Homes

THE MYLNE

3 bedroom home



GROUND FLOOR	metres	feet / inches
Kitchen / dining area	6.13 x 3.87	20' 1" x 12' 8"
Living room	4.86 x 3.50	15' 11" x 11' 6"

FIRST FLOOR

Bedroom 1	6.13 x 3.93	20' 1" x 12' 10"
Bedroom 2	3.34 x 2.65	10' 11" x 8' 8"
Bedroom 3	3.43 x 2.27	11' 3"x 7' 5"

ovn	oven	ffzr	fridge freezer
h	hob	cup'd	cupboard
ds	dishwasher space	◀ ▶	measuring points
ws	washing machine space		

The Mylne | Chapel Gate |

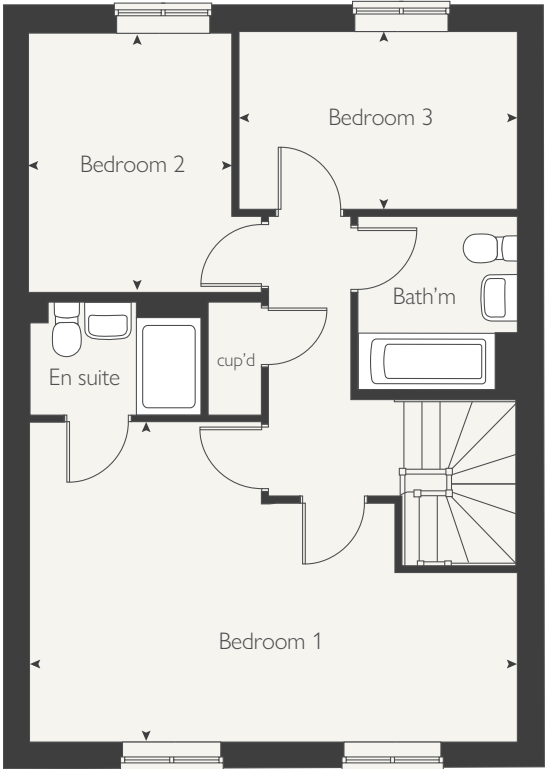
The floorplan has been produced for illustrative purposes only. Room sizes shown are between arrow points as indicated on plan. The dimensions have tolerances of + or -50mm and should not be used other than for general guidance. If specific dimensions are required, enquiries should be made to the sales consultant. The floor plans shown are not to scale. Measurements are based on the original drawings. Slight variations may occur during construction.

The illustrations shown are computer generated impressions of how the property may look and are indicative only. External details or finishes may vary on individual plots and homes may be built in either detached or attached styles depending on the development layout. Exact specifications, window styles and whether a property is left or right-handed may differ from plot to plot. Please speak to our sales consultant for specific plot details.

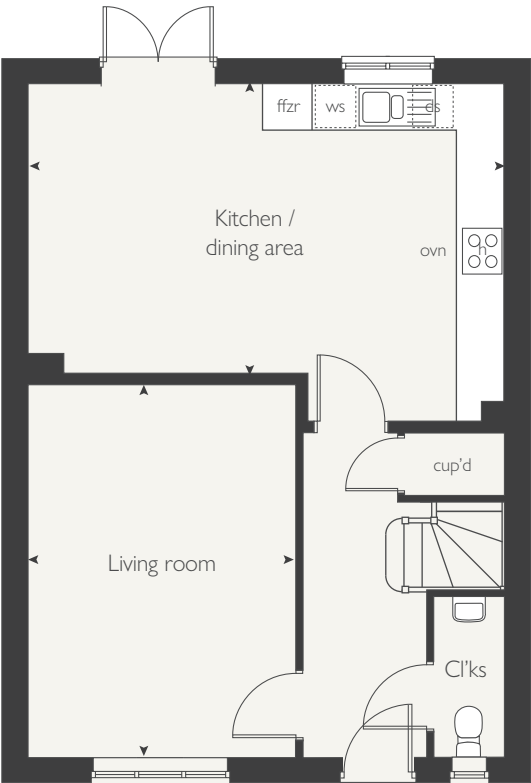
Produced by the Vistry Group Design Studio.

DS06706 / 03.24

FIRST FLOOR



GROUND FLOOR



COUNTRYSIDE
Homes



THE OLYMPIA

4 bedroom home



COUNTRYSIDE
Homes

THE OLYMPIA

4 bedroom home



GROUND FLOOR	metres	feet / inches
Kitchen	4.33 x 2.81	14' 2" x 9' 2"
Dining area	4.15 x 3.10	13' 7" x 10' 2"
Living room	5.91 x 3.12	19' 4" x 10' 2"

FIRST FLOOR

Bedroom 1	4.39 x 3.17	14' 4" x 10' 4"
Bedroom 2	4.33 x 2.77	14' 2" x 9' 1"
Bedroom 3	3.05 x 3.04	10' 0" x 9' 11"
Bedroom 4	3.05 x 2.81	10' 0" x 9' 2"

ovn	oven	ffzs	fridge freezer space
h	hob	cup'd	cupboard
ds	dishwasher space	◀ ▶	measuring points
ws	washing machine space		

The Olympia | Chapel Gate |

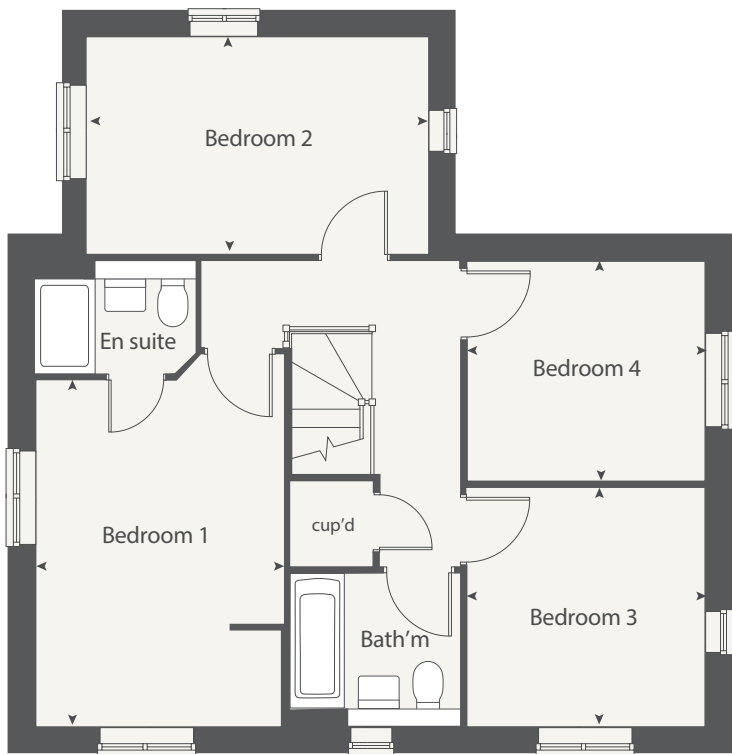
The floorplan has been produced for illustrative purposes only. Room sizes shown are between arrow points as indicated on plan. The dimensions have tolerances of + or -50mm and should not be used other than for general guidance. If specific dimensions are required, enquiries should be made to the sales consultant. The floor plans shown are not to scale. Measurements are based on the original drawings. Slight variations may occur during construction.

The illustrations shown are computer generated impressions of how the property may look and are indicative only. External details or finishes may vary on individual plots and homes may be built in either detached or attached styles depending on the development layout. Exact specifications, window styles and whether a property is left or right-handed may differ from plot to plot. Please speak to our sales consultant for specific plot details.

Produced by the Vistry Group Design Studio.

DS06706 / 03.24

FIRST FLOOR



GROUND FLOOR



COUNTRYSIDE
Homes



THE PEMBROKE

4 bedroom home

THE PEMBROKE

4 bedroom home



GROUND FLOOR	metres	feet / inches
Kitchen / dining area	8.16 x 3.42	26' 9" x 11' 2"
Living room	4.90 x 3.56	16' 0" x 11' 8"
Study	2.47 x 2.43	8' 1" x 7' 11"

FIRST FLOOR

Bedroom 1	4.35 x 3.46	14' 3" x 11' 4"
Bedroom 2	3.78 x 3.56	12' 4" x 11' 8"
Bedroom 3	3.41 x 2.94	11' 2" x 9' 7"
Bedroom 4	3.98 x 2.88	13' 0" x 9' 5"

ovn	oven	ffzs	fridge freezer space
h	hob	ts	tumble dryer space
ds	dishwasher space	cup'd	cupboard
ws	washing machine space	< >	measuring points

The Pembroke | Chapel Gate |

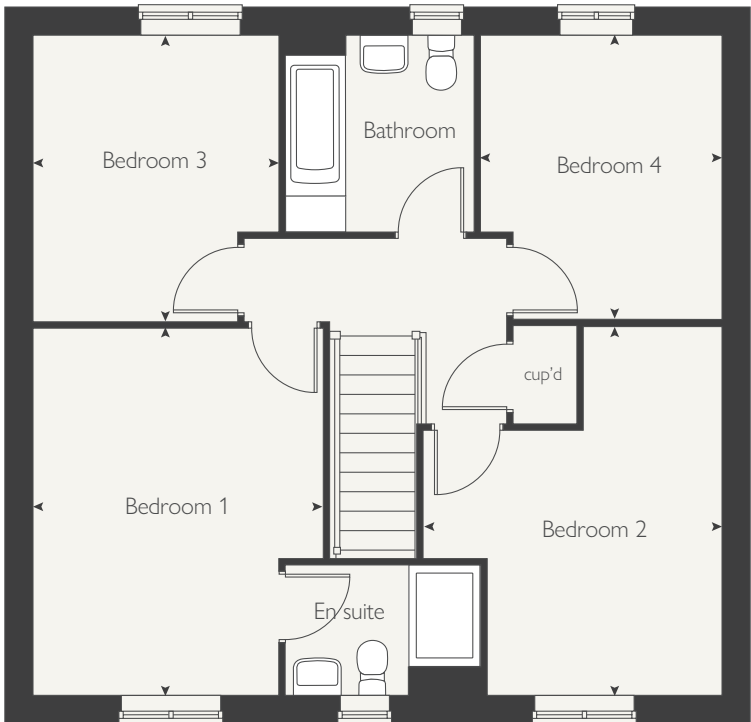
The floorplan has been produced for illustrative purposes only. Room sizes shown are between arrow points as indicated on plan. The dimensions have tolerances of + or -50mm and should not be used other than for general guidance. If specific dimensions are required, enquiries should be made to the sales consultant. The floor plans shown are not to scale. Measurements are based on the original drawings. Slight variations may occur during construction.

The illustrations shown are computer generated impressions of how the property may look and are indicative only. External details or finishes may vary on individual plots and homes may be built in either detached or attached styles depending on the development layout. Exact specifications, window styles and whether a property is left or right-handed may differ from plot to plot. Please speak to our sales consultant for specific plot details.

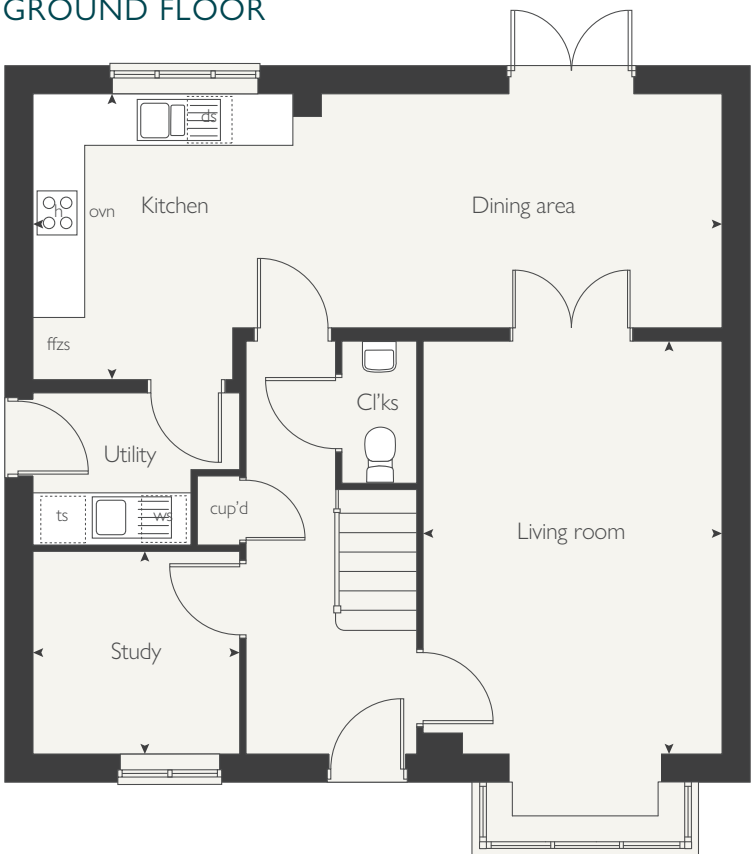
Produced by the Vistry Group Design Studio.

DS06706 / 03.24

FIRST FLOOR



GROUND FLOOR



COUNTRYSIDE
Homes



CHAPEL GATE

Salisbury

CHAPEL GATE

Salisbury

Use this guide to see what features are included in your new home. Your sales consultant will be happy to discuss the **Personalise** range of extras available.

[illegible]

	2 bedroom	The Hadleigh	The Flanders	The Cartwright	The Cooper	3 bedroom	The Hadleigh 1.5	The Hickstead	The Stoneleigh	The Becket	4 bedroom	The Olympia	The Mylne	The Pembroke
DOORS AND WINDOWS														
Front door with three-point security locking system and security chain	■	■	■	■	■		■	■	■	■		■	■	■
Chrome plated front door numerals	■	■	■	■	■		■	■	■	■		■	■	■
PVCu double glazing to windows	■	■	■	■	■		■	■	■	■		■	■	■
Double glazed PVCu French doors with three point locking system	■	■	■	■	■		■	■	■			■	■	■
Internal Prefinished Oak Cottage style doors with Brass Satin finish handles	■	■	■	■	■		■	■	■	■		■	■	■
Paving outside French door and path to garage personnel door (where applicable)	■	■	■	■	■		■	■	■			■	■	■
GENERAL														
White painted walls and smooth white ceilings	■	■	■	■	■		■	■	■	■		■	■	■
Combined usb/double sockets in kitchen, living room and bedroom(s)	■	■	■	■	■		■	■	■	■		■	■	■
Multi-media point in living room	■	■	■	■	■		■	■	■	■		■	■	■
TV point to bedroom 1 and family room (where applicable)	■	■	■	■	■		■	■	■	■		■	■	■
Master telephone socket to lounge and study where applicable	■	■	■	■	■		■	■	■	■		■	■	■
Gas central heating with wall mounted combi-boiler, programme selector and room thermostat(s)	■	■	■	■	■		■	■	■	■		■	■	■
Hive control and hub for energy efficient heating control	■	■	■	■	■		■	■	■	■		■	■	■
Thermostatic valves to all radiators (with the exception of rooms with separate thermostat control)	■	■	■	■	■		■	■	■	■		■	■	■
Car charging points	■	■	■	■	■		■	■	■	■		■	■	■
PV solar panels	■	■	■	■	■		■	■	■	■		■	■	■
Fitted external tap	■	■	■	■	■		■	■	■	■		■	■	■
Fitted door bell														
External light fitted to front porch and wiring for external light to rear door	■	■	■	■	■		■	■	■	■		■	■	■
Mains wired smoke detectors with battery back-up	■	■	■	■	■		■	■	■	■		■	■	■
Battery powered Carbon Monoxide detector (wall mounted) to be provided, located next to boiler	■	■	■	■	■		■	■	■	■		■	■	■
Power and lighting to 'on plot' garage (where applicable)	■	■	■	■	■		■	■	■	■		■	■	■
Enclosed fenced rear garden, and garden gate (where applicable)	■	■	■	■	■		■	■	■	■		■	■	■
Landscaped front gardens	■	■	■	■	■		■	■	■	■		■	■	■
NHBC Buildmark cover	■	■	■	■	■		■	■	■	■		■	■	■
First two years' customer service support from Countryside Homes	■	■	■	■	■		■	■	■	■		■	■	■

- Fitted as standard - included in the property
- * Subject to stage of construction

SO MUCH CHOICE...

Part of the excitement of buying a new home is the thrill of being the first person to live in the property and having a brand new contemporary kitchen and modern bathroom. Our premium brand partners ensure that all of our fixtures and fittings comply with the latest Government building regulations and only branded appliances are installed in your new home.

Once you know what specification comes included, you'll have a choice from our specially selected tiles for your kitchen and bathrooms, as well as kitchen worktops and cupboard doors. You can then use the Countryside Homes Personalise brochure to add the finishing touches to your home to make it extra special for you!

From personalising your bathrooms with stunning ceramics, or adding smooth sliding wardrobes to your main bedroom, there are a wide range of additional options and upgrades available.

The availability of items is subject to the stage of build, and can vary by development and house type. Our sales consultants will be happy to provide guidance.



The specification shown in this leaflet is correct at the time of going to press. Countryside Homes is continually reviewing and updating the specification on all housetypes and therefore reserves the right to change specification details. Photographs depict a typical Countryside Homes interior and may include optional upgrades. For full details regarding current specification and finishes, for the plots you are interested in, please refer to our sales consultant.

Produced by the Vistry Group Design Studio.

DS06706 / 04.24



COUNTRYSIDE
Homes