



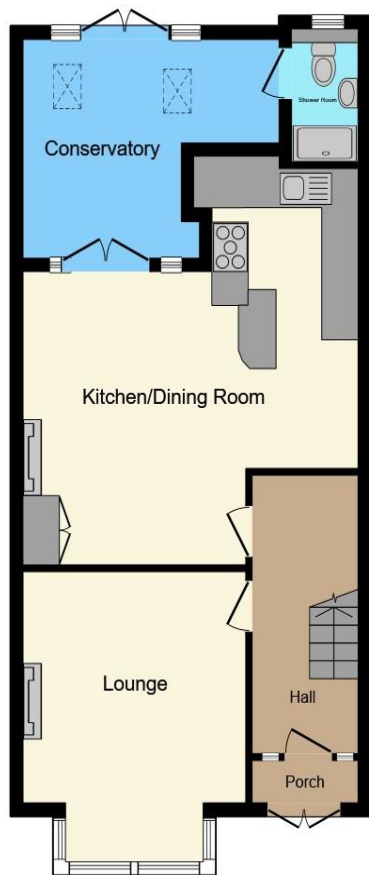
Ebery Grove, Portsmouth PO3 6HQ

welcome to

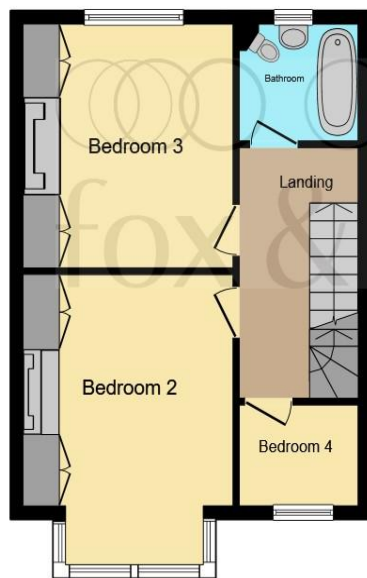
Ebery Grove, Portsmouth

OPEN HOUSE SATURDAY 17TH MAY BY APPOINTMENT ONLY **FOUR BEDROOMS, THREE RECEPTION ROOMS AND A BATHROOM ON EVERY FLOOR!** We are absolutely delighted to be offering to the market this charming family home located on Ebery Grove.





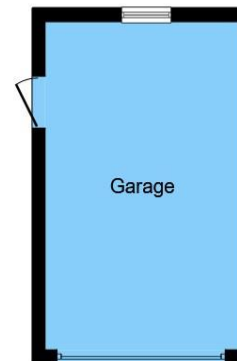
Ground Floor



First Floor



Second Floor



Garage

Entrance Porch

Entrance Hall

Cloakroom

Lounge

14' 8" MAX x 12' MAX (4.47m MAX x 3.66m MAX)

Kitchen Diner

15' 8" MAX x 18' 2" MAX (4.78m MAX x 5.54m MAX)

Reception Room Three

11' 1" x 17' 4" MAX (3.38m x 5.28m MAX)

Landing

Bedroom One

14' 2" x 12' 9" (4.32m x 3.89m)

En Suite

Bedroom Two

14' 7" x 9' 1" plus recess (4.45m x 2.77m plus recess)

Bedroom Three

12' 2" x 9' 2" plus recess (3.71m x 2.79m plus recess)

Bedroom Four

4' 11" x 6' 8" (1.50m x 2.03m)

Bathroom

Rear Garden

This floor plan is for illustrative purposes only. It is not drawn to scale. Any measurements, floor areas (including any total floor area), openings and orientation are approximate. No details are guaranteed, they cannot be relied upon for any purpose and they do not form part of any agreement. No liability is taken for any error, omission or misstatement. A party must rely upon its own inspection(s). Powered by www.focalagent.com

welcome to

Ebery Grove, Portsmouth

- Four Bedrooms
- Three reception rooms
- Bathroom on every floor
- Garage
- Sought after location

Tenure: Freehold EPC Rating: D
Council Tax Band: C

offers in excess of

£375,000



Please note the marker reflects the
postcode not the actual property

view this property online fox-and-sons.co.uk/Property/POR111150



Property Ref:
POR111150 - 0004

1. MONEY LAUNDERING REGULATIONS Intending purchasers will be asked to produce identification documentation at a later stage and we would ask for your co-operation in order that there is no delay in agreeing the sale. 2. These particulars do not constitute part or all of an offer or contract. 3. The measurements indicated are supplied for guidance only and as such must be considered incorrect. Potential buyers are advised to recheck measurements before committing to any expense. 4. We have not tested any apparatus, equipment, fixtures or services and it is in the buyers interest to check the working condition of any appliances. 5. Where an EPC, or a Home Report (Scotland only) is held for this property, it is available for inspection at the branch by appointment. If you require a printed version of a Home Report, you will need to pay a reasonable production charge reflecting printing and other costs. 6. We are not able to offer an opinion either written or verbal on the content of these reports and this must be obtained from your legal representative. 7. Whilst we take care in preparing these reports, a buyer should ensure that his/her legal representative confirms as soon as possible all matters relating to title including the extent and boundaries of the property and other important matters before exchange of contracts.

Fox & Sons is a trading name of Sequence (UK) Limited which is registered in England and Wales under company number 4268443, Registered Office is Cumbria House, 16-20 Hockliffe Street, Leighton Buzzard, Bedfordshire, LU7 1GN. VAT Registration Number is 500 2481 05.


fox & sons



023 9267 1110



Portsmouth@fox-and-sons.co.uk



126 London Road, PORTSMOUTH, Hampshire,
PO2 9DE



fox-and-sons.co.uk