



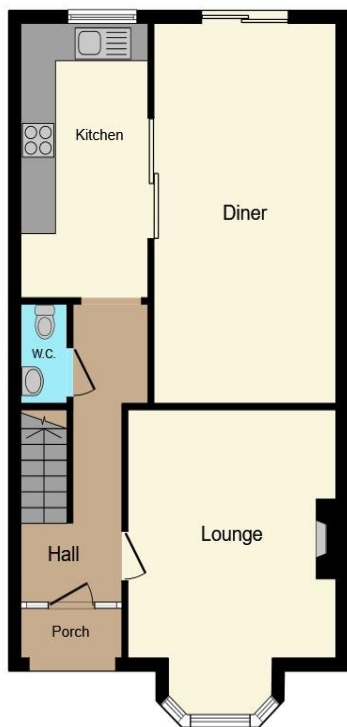
Jenkins Grove, Portsmouth PO3 6HF

welcome to

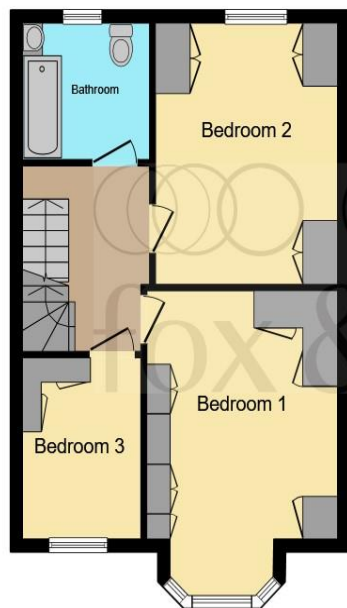
Jenkins Grove, Portsmouth

****CHARMING CHAIN FREE FAMILY HOME!**** We are pleased to welcome to the market this charming three bedroom with additional loft room family home located in Jenkins Grove, Baffins.

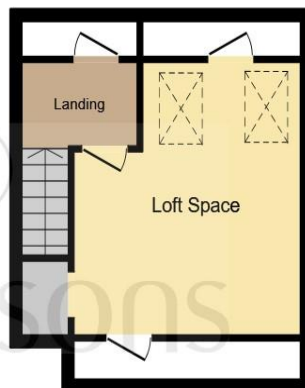




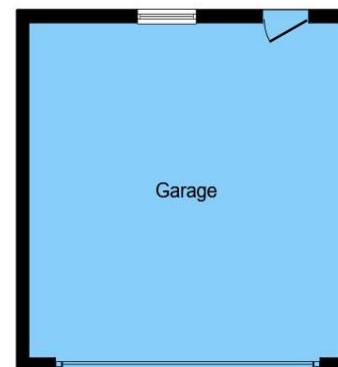
Ground Floor



First Floor



Second Floor



Garage

Entrance Porch

Entrance Hall

Lounge

15' 3" x 11' 11" (4.65m x 3.63m)

Dining Room

20' 4" x 10' 3" (6.20m x 3.12m)

Kitchen

14' 7" x 7' 6" (4.45m x 2.29m)

Landing

Bedroom One

15' 5" x 10' 9" (4.70m x 3.28m)

Bedroom Two

13' 8" x 10' 9" (4.17m x 3.28m)

Bedroom Three

7' 4" x 6' 9" (2.24m x 2.06m)

Loft Room

14' 5" x 12' 10" (4.39m x 3.91m)

Bathroom

Rear Garden

Garage

18' 2" x 18' (5.54m x 5.49m)

Agents Notes

This floor plan is for illustrative purposes only. It is not drawn to scale. Any measurements, floor areas (including any total floor area), openings and orientation are approximate. No details are guaranteed, they cannot be relied upon for any purpose and they do not form part of any agreement. No liability is taken for any error, omission or misstatement. A party must rely upon its own inspection(s). Powered by www.focalagent.com

welcome to

Jenkins Grove, Portsmouth

- Three bedroom with additional loft room
- Double Garage with lighting, electric supply with electric roller shutter
- Chain Free
- Double Bay
- Set in a sought after location

Tenure: Freehold EPC Rating: C

offers over

£350,000



Please note the marker reflects the postcode not the actual property

view this property online fox-and-sons.co.uk/Property/POR110875



Property Ref:
POR110875 - 0005

1. MONEY LAUNDERING REGULATIONS Intending purchasers will be asked to produce identification documentation at a later stage and we would ask for your co-operation in order that there is no delay in agreeing the sale. 2. These particulars do not constitute part or all of an offer or contract. 3. The measurements indicated are supplied for guidance only and as such must be considered incorrect. Potential buyers are advised to recheck measurements before committing to any expense. 4. We have not tested any apparatus, equipment, fixtures or services and it is in the buyers interest to check the working condition of any appliances. 5. Where an EPC, or a Home Report (Scotland only) is held for this property, it is available for inspection at the branch by appointment. If you require a printed version of a Home Report, you will need to pay a reasonable production charge reflecting printing and other costs. 6. We are not able to offer an opinion either written or verbal on the content of these reports and this must be obtained from your legal representative. 7. Whilst we take care in preparing these reports, a buyer should ensure that his/her legal representative confirms as soon as possible all matters relating to title including the extent and boundaries of the property and other important matters before exchange of contracts.


fox & sons



023 9267 1110



Portsmouth@fox-and-sons.co.uk



126 London Road, PORTSMOUTH, Hampshire,
PO2 9DE



fox-and-sons.co.uk