



Hilsea Heights Hilsea Crescent, Portsmouth PO2 9SW

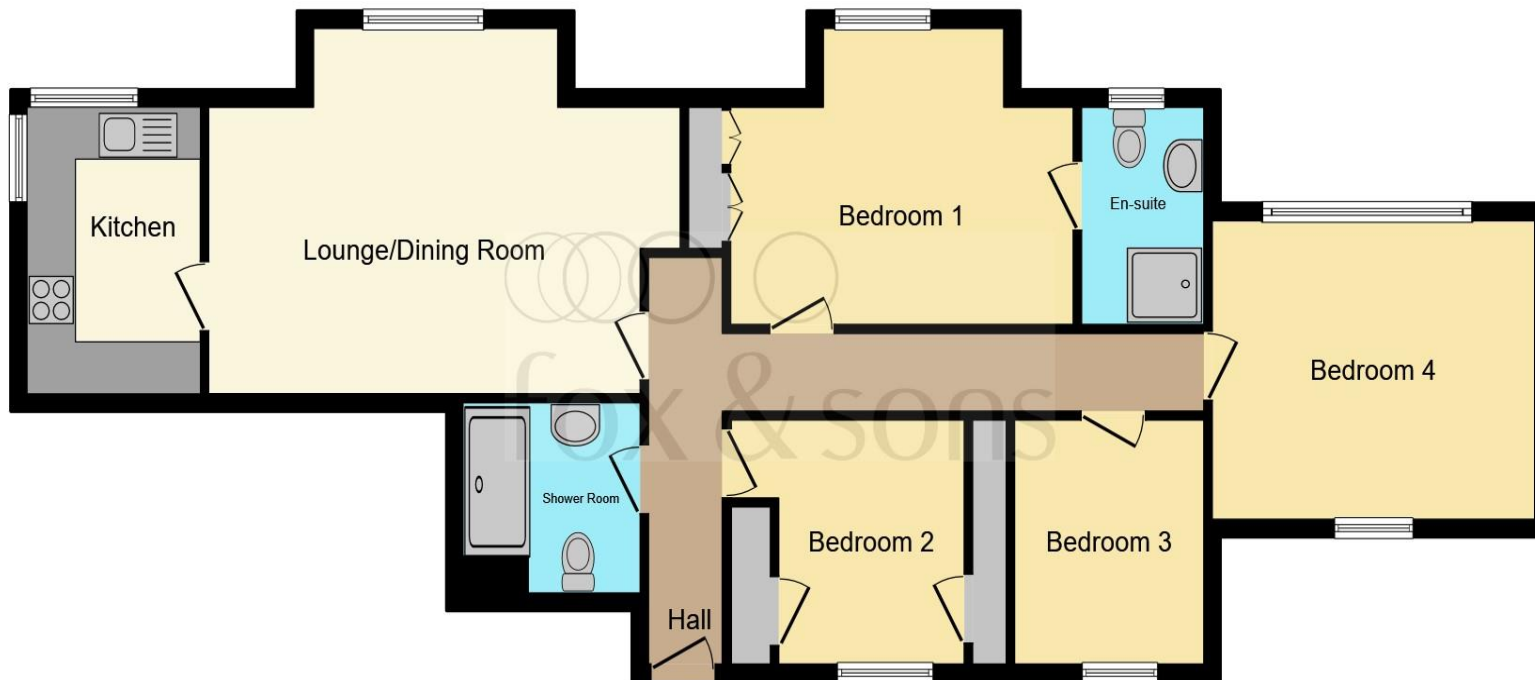
welcome to

Hilsea Heights Hilsea Crescent, Portsmouth

Four bedrooms *Secure parking* *En suite to master bedroom*

We are delighted to welcome to market this unique four bedroom upper flat with secure gated parking!





Entrance Hall

Lounge/Dining Room

20' 10" MAX x 13' 9" (6.35m MAX x 4.19m)

Kitchen

7' x 10' 9" (2.13m x 3.28m)

Shower Room

Bedroom One

13' 11" x 11' 2" (4.24m x 3.40m)

En Suite

Bedroom Two

11' 2" x 9' 2" (3.40m x 2.79m)

Bedroom Three

13' 1" x 11' 4" (3.99m x 3.45m)

Bedroom Four

7' 8" x 9' 5" (2.34m x 2.87m)

Allocated Parking Space

This floor plan is for illustrative purposes only. It is not drawn to scale. Any measurements, floor areas (including any total floor area), openings and orientation are approximate. No details are guaranteed, they cannot be relied upon for any purpose and they do not form part of any agreement. No liability is taken for any error, omission or misstatement. A party must rely upon its own inspection(s). Powered by www.focalagent.com

welcome to

Hilsea Heights Hilsea Crescent, Portsmouth

- Secure Gated Parking
- Four fantastic size bedrooms
- Close to motorway links
- En suite to master bedroom
- Modern Fitted Kitchen

Tenure: Leasehold EPC Rating: C

This is a Leasehold property with details as follows; Term of Lease 125 years from 25 Dec 2002. Should you require further information please contact the branch. Please Note additional fees could be incurred for items such as Leasehold packs.

£250,000



Please note the marker reflects the postcode not the actual property

view this property online fox-and-sons.co.uk/Property/POR110741



Property Ref:
POR110741 - 0005

1. MONEY LAUNDERING REGULATIONS Intending purchasers will be asked to produce identification documentation at a later stage and we would ask for your co-operation in order that there is no delay in agreeing the sale. 2. These particulars do not constitute part or all of an offer or contract. 3. The measurements indicated are supplied for guidance only and as such must be considered incorrect. Potential buyers are advised to recheck measurements before committing to any expense. 4. We have not tested any apparatus, equipment, fixtures or services and it is in the buyers interest to check the working condition of any appliances. 5. Where an EPC, or a Home Report (Scotland only) is held for this property, it is available for inspection at the branch by appointment. If you require a printed version of a Home Report, you will need to pay a reasonable production charge reflecting printing and other costs. 6. We are not able to offer an opinion either written or verbal on the content of these reports and this must be obtained from your legal representative. 7. Whilst we take care in preparing these reports, a buyer should ensure that his/her legal representative confirms as soon as possible all matters relating to title including the extent and boundaries of the property and other important matters before exchange of contracts.


fox & sons



023 9267 1110



Portsmouth@fox-and-sons.co.uk



126 London Road, PORTSMOUTH, Hampshire,
PO2 9DE



fox-and-sons.co.uk