



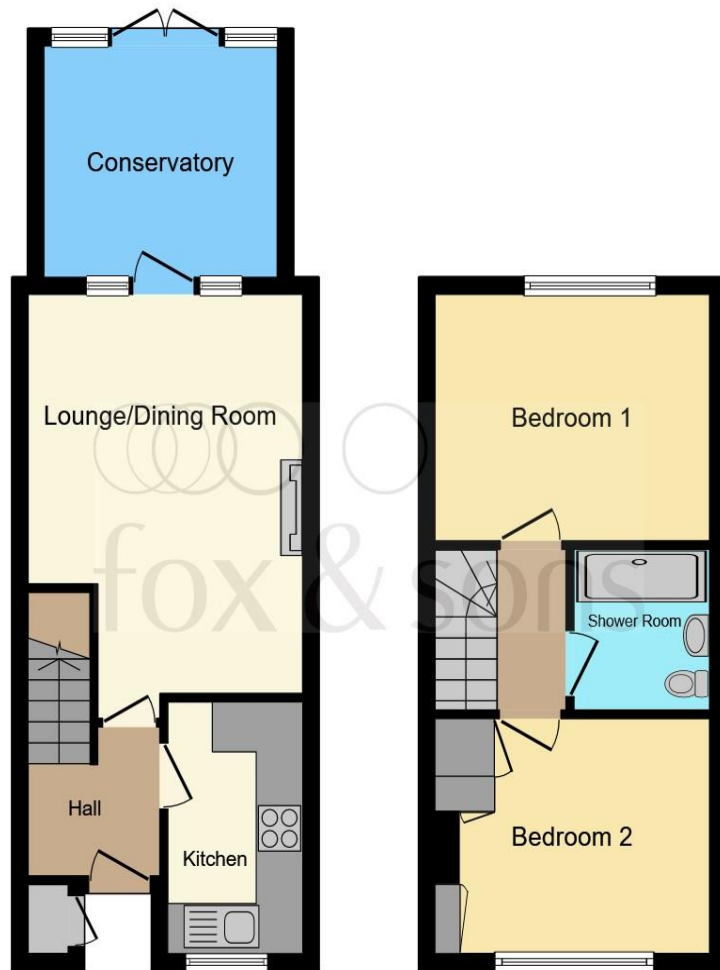
Templeton Close, Portsmouth PO2 9NT

welcome to

Templeton Close, Portsmouth

CHAIN FREE TWO BEDROOM HOUSE WITH OFF ROAD PARKING! We are thrilled to bring to the market this charming two bedroom family house in Templeton Close, Portsmouth.





Ground Floor

First Floor

Total floor area 63.8 m² (687 sq.ft.) approx

This floorplan is for illustrative purposes only and is not drawn to scale. Measurements, floor-areas, openings and orientations are approximate. They should not be relied upon for any purpose and do not form any part of an agreement. No liability is taken for any error or mis-statement. All parties must rely on their own inspections.

Entrance Porch

Entrance Hall

Lounge

15' 8" x 11' 9" (4.78m x 3.58m)

Kitchen

9' 1" x 5' 1" (2.77m x 1.55m)

Conservatory

9' x 9' 1" (2.74m x 2.77m)

Landing

Bedroom One

9' 8" x 11' 9" (2.95m x 3.58m)

Bedroom Two

9' 2" x 11' 6" (2.79m x 3.51m)

Bathroom

Rear Garden

Agents Notes

welcome to

Templeton Close, Portsmouth

- Chain Free
- Two allocated parking spaces
- Conservatory
- Rear garden with access
- Two Double Bedrooms

Tenure: Freehold EPC Rating: D

offers in the region of

£260,000



view this property online fox-and-sons.co.uk/Property/POR110443

Please note the marker reflects the postcode not the actual property



Property Ref:
POR110443 - 0003

1. MONEY LAUNDERING REGULATIONS Intending purchasers will be asked to produce identification documentation at a later stage and we would ask for your co-operation in order that there is no delay in agreeing the sale. 2. These particulars do not constitute part or all of an offer or contract. 3. The measurements indicated are supplied for guidance only and as such must be considered incorrect. Potential buyers are advised to recheck measurements before committing to any expense. 4. We have not tested any apparatus, equipment, fixtures or services and it is in the buyers interest to check the working condition of any appliances. 5. Where an EPC, or a Home Report (Scotland only) is held for this property, it is available for inspection at the branch by appointment. If you require a printed version of a Home Report, you will need to pay a reasonable production charge reflecting printing and other costs. 6. We are not able to offer an opinion either written or verbal on the content of these reports and this must be obtained from your legal representative. 7. Whilst we take care in preparing these reports, a buyer should ensure that his/her legal representative confirms as soon as possible all matters relating to title including the extent and boundaries of the property and other important matters before exchange of contracts.


fox & sons



023 9267 1110



Portsmouth@fox-and-sons.co.uk



126 London Road, PORTSMOUTH, Hampshire,
PO2 9DE



fox-and-sons.co.uk