



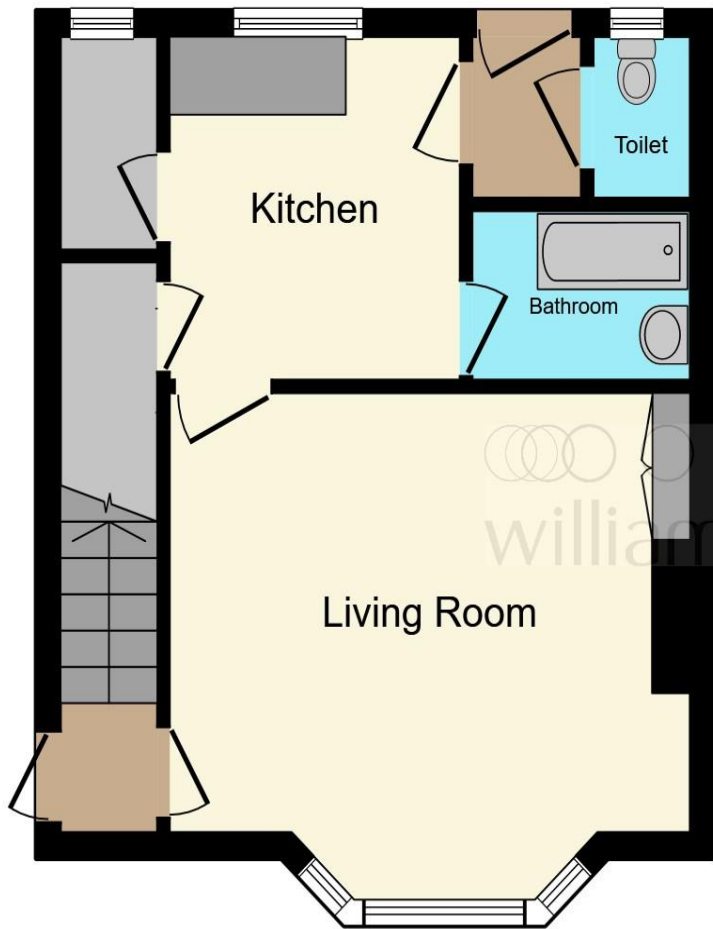
Melbourne Road, Nottingham NG8 5HQ

welcome to

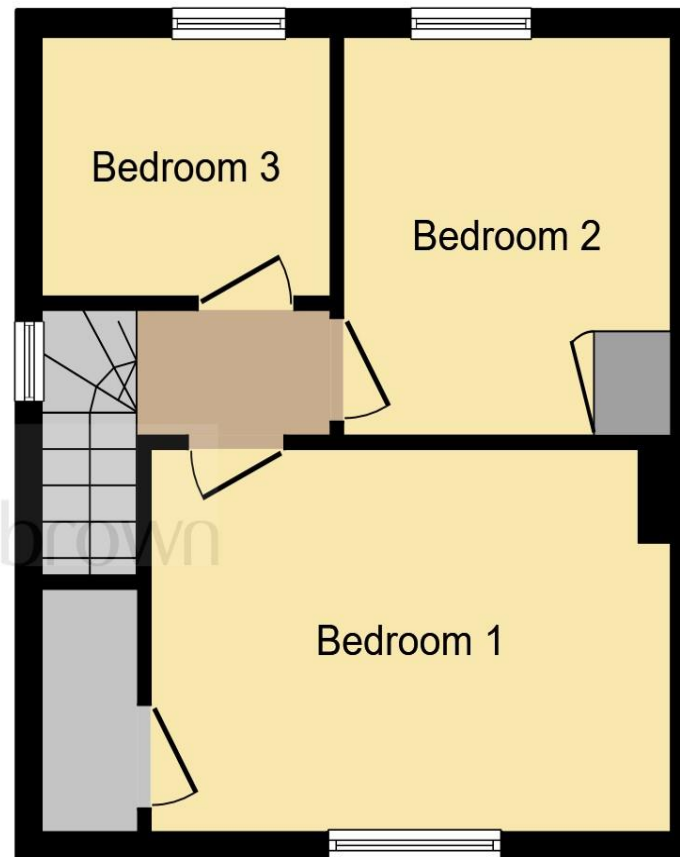
Melbourne Road, Nottingham

****IN NEED OF MODERNISATION**** THREE BEDROOM END-TERRACED property on Melbourne Road with BAY FRONT WINDOW. DETACHED GARAGE and ENCLOSED FRONT & REAR GARDEN. IDEAL FOR INVESTMENT BUYERS in a sought after NG8 postcode location. Bulwell rail station LESS THAN TWO MILES AWAY.





Ground Floor



First Floor

Living Room

14' 5" MAX x 14' 4" MAX (4.39m MAX x 4.37m MAX)

Kitchen

8' 7" MAX x 8' 2" MAX (2.62m MAX x 2.49m MAX)

Bedroom One

14' 7" MAX x 10' 1" MAX (4.45m MAX x 3.07m MAX)

Bedroom Two

10' 1" MAX x 8' 2" MAX (3.07m MAX x 2.49m MAX)

Bedroom Three

8' 1" MAX x 6' 10" MAX (2.46m MAX x 2.08m MAX)

This floor plan is for illustrative purposes only. It is not drawn to scale. Any measurements, floor areas (including any total floor area), openings and orientation are approximate. No details are guaranteed, they cannot be relied upon for any purpose and they do not form part of any agreement. No liability is taken for any error, omission or misstatement. A party must rely upon its own inspection(s). Powered by www.focalagent.com

welcome to

Melbourne Road, Nottingham

- **OPEN HOUSE SATURDAY 17TH MAY - BY APPOINTMENT ONLY**
- Council Tax Band: A
- THREE BEDROOMS
- END-TERRACED PROPERTY
- OFF-STREET PARKING VIA DETACHED GARAGE

Tenure: Freehold EPC Rating: Awaiting

Council Tax Band: A

£120,000



Please note the marker reflects the postcode not the actual property

view this property online [williamhbrown.co.uk/Property/NVS118070](https://www.williamhbrown.co.uk/Property/NVS118070)



Property Ref:
NVS118070 - 0002

1. MONEY LAUNDERING REGULATIONS Intending purchasers will be asked to produce identification documentation at a later stage and we would ask for your co-operation in order that there is no delay in agreeing the sale. 2. These particulars do not constitute part or all of an offer or contract. 3. The measurements indicated are supplied for guidance only and as such must be considered incorrect. Potential buyers are advised to recheck measurements before committing to any expense. 4. We have not tested any apparatus, equipment, fixtures or services and it is in the buyers interest to check the working condition of any appliances. 5. Where an EPC, or a Home Report (Scotland only) is held for this property, it is available for inspection at the branch by appointment. If you require a printed version of a Home Report, you will need to pay a reasonable production charge reflecting printing and other costs. 6. We are not able to offer an opinion either written or verbal on the content of these reports and this must be obtained from your legal representative. 7. Whilst we take care in preparing these reports, a buyer should ensure that his/her legal representative confirms as soon as possible all matters relating to title including the extent and boundaries of the property and other important matters before exchange of contracts.

William H Brown is a trading name of Sequence (UK) Limited which is registered in England and Wales under company number 4268443, Registered Office is Cumbria House, 16-20 Hockliffe Street, Leighton Buzzard, Bedfordshire, LU7 1GN. VAT Registration Number is 500 2481 05.



william h brown



01159 587766



nottingham@williamhbrown.co.uk



20 Upper Parliament Street, NOTTINGHAM,
Nottinghamshire, NG1 2AD



[williamhbrown.co.uk](https://www.williamhbrown.co.uk)