



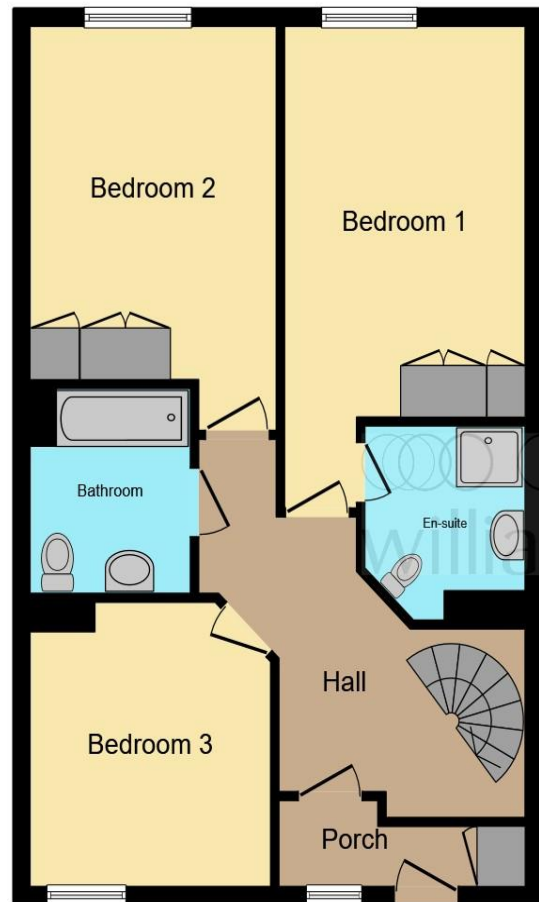
The Gallery Hope Drive, Nottingham NG7 1BT

welcome to

The Gallery Hope Drive, Nottingham

Situated within The Park Estate DUPLEX APARTMENT located within The Gallery with THREE DOUBLE BEDROOMS and PRIVATE & COMMUNAL BALCONY. ENSUITE, BATHROOM & WC **IDEAL FOR A RANGE OF BUYERS** CLOSE PROXIMITY TO NOTTINGHAM CITY CENTRE and PERMIT PARKING AVAILABLE.





Ground Floor



First Floor

Bedroom One

15' 4" MAX x 10' MAX (4.67m MAX x 3.05m MAX)

Bedroom Two

13' 6" MAX x 10' 1" MAX (4.11m MAX x 3.07m MAX)

Bedroom Three

10' 10" MAX x 9' 9" MAX (3.30m MAX x 2.97m MAX)

Living Dining Room

21' 7" MAX x 20' 5" MAX (6.58m MAX x 6.22m MAX)

Kitchen

11' MAX x 9' 8" MAX (3.35m MAX x 2.95m MAX)

This floor plan is for illustrative purposes only. It is not drawn to scale. Any measurements, floor areas (including any total floor area), openings and orientation are approximate. No details are guaranteed, they cannot be relied upon for any purpose and they do not form part of any agreement. No liability is taken for any error, omission or misstatement. A party must rely upon its own inspection(s). Powered by www.focalagent.com

welcome to

The Gallery Hope Drive, Nottingham

- Council Tax Band: E
- ****MUST VIEW IN PERSON** MUST VIEW TO TRULY APPRECIATE THIS PROPERTY!**
- THREE BEDROOM DUPLEX APARTMENT
- UNDERGROUND OFF-STREET PARKING SPACE
- ENSUITE, BATHROOM & SEPARATE WC

Tenure: Leasehold EPC Rating: D

This is a Leasehold property with details as follows; Term of Lease 999 years from 30 Apr 2004. Should you require further information please contact the branch. Please Note additional fees could be incurred for items such as Leasehold packs.

offers in the region of

£300,000



Please note the marker reflects the postcode not the actual property

view this property online williamhbrown.co.uk/Property/NVS118507



Property Ref:
NVS118507 - 0003

1. MONEY LAUNDERING REGULATIONS Intending purchasers will be asked to produce identification documentation at a later stage and we would ask for your co-operation in order that there is no delay in agreeing the sale. 2. These particulars do not constitute part or all of an offer or contract. 3. The measurements indicated are supplied for guidance only and as such must be considered incorrect. Potential buyers are advised to recheck measurements before committing to any expense. 4. We have not tested any apparatus, equipment, fixtures or services and it is in the buyers interest to check the working condition of any appliances. 5. Where an EPC, or a Home Report (Scotland only) is held for this property, it is available for inspection at the branch by appointment. If you require a printed version of a Home Report, you will need to pay a reasonable production charge reflecting printing and other costs. 6. We are not able to offer an opinion either written or verbal on the content of these reports and this must be obtained from your legal representative. 7. Whilst we take care in preparing these reports, a buyer should ensure that his/her legal representative confirms as soon as possible all matters relating to title including the extent and boundaries of the property and other important matters before exchange of contracts.

William H Brown is a trading name of Sequence (UK) Limited which is registered in England and Wales under company number 4268443, Registered Office is Cumbria House, 16-20 Hockliffe Street, Leighton Buzzard, Bedfordshire, LU7 1GN. VAT Registration Number is 500 2481 05.



william h brown



01159 587766



nottingham@williamhbrown.co.uk



20 Upper Parliament Street, NOTTINGHAM,
Nottinghamshire, NG1 2AD



williamhbrown.co.uk