



Hawthorns, Lower Green, Freethorpe, Norwich, NR13 3NP

welcome to

Hawthorns Lower Green, Freethorpe, Norwich

A Stunning and Spacious FOUR/FIVE BEDROOM DETACHED Home with Exceptional Living Space. This impressive detached home delivers generous proportions, multiple reception rooms, and a superb flow ideal for modern family living.

Set in an idyllic Rural Location. !!CALL TO BOOK YOUR VIEWING TODAY!!



Entrance Hall

Storage cupboard, access to separate toilet.

Separate Toilet

Wc, wash hand basin.

Dining Room/Family Lounge

21' 9" x 13' 3" (6.63m x 4.04m)

Two sets of french doors to rear, laminate flooring, radiator, open plan bi-fold door to kitchen.

Kitchen/Diner

18' 4" x 18' 2" (5.59m x 5.54m)

Bi-fold doors to garden, wall and base units with wooden work surface, central island, tiled flooring, tiled backsplash, space for American style fridge freezer, 2 x double ovens (four ovens), integrated dishwasher, built in 'hidden' extraction, induction hob on island, stainless steel sink.

Utility Room

9' 1" x 6' 11" (2.77m x 2.11m)

Space for free standing fridge freezer, washing machine plumbing, space for dryer, wall and base units with work surface, stainless steel sink and drainer, tiled flooring.

Lounge/Snug

15' 5" x 12' 2" (4.70m x 3.71m)

Carpeted flooring, fireplace, double glazed window to front aspect, radiator.

Second Lounge

14' 4" x 8' 7" (4.37m x 2.62m)

Currently used as an at home gym, laminate flooring, radiator, double glazed window to front aspect.

Annex Shower Room

Walk in shower, wash hand basin, wc, tiled flooring, double glazed window to side aspect.

Annex Kitchenette

7' 3" x 7' 1" (2.21m x 2.16m)

Wall and base units with work surface, tiled backsplash, stainless steel sink and drainer, laminate flooring, space for fridge/freezer.

Landing

Carpeted flooring

Bedroom One

13' x 10' 7" (3.96m x 3.23m)

Double glazed window to rear aspect, walk in wardrobe, carpeted flooring, radiator.

Ensuite

Walk in shower, wash hand basin, wc.

Bedroom Two

12' 2" x 11' 9" (3.71m x 3.58m)

Double glazed window to front aspect, carpeted flooring, radiator.

Bedroom Three

11' 8" x 9' 1" (3.56m x 2.77m)

Walk in wardrobe, double glazed window to front aspect, radiator, laminate flooring.

Bedroom Four

12' 10" x 9' 3" (3.91m x 2.82m)

Double glazed window to rear aspect, radiator, carpeted flooring.

Bathroom

Shower and bath, wc, wash hand basin, tiled flooring.

Double Garage

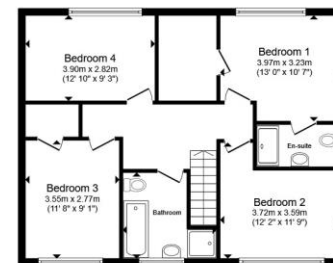
18' 4" x 16' 2" (5.59m x 4.93m)

Rear Garden

Generous enclosed, private rear garden. Patio area leading to steps up to the lawned area, and round to a shed towards the end of the garden. Established shrubbery and trees, well maintained.



Ground Floor



First Floor

Total floor area 214.9 m² (2,313 sq.ft.) approx

This floor plan is for illustrative purposes only. It is not drawn to scale. Any measurements, floor areas (including any total floor area), openings and orientation are approximate. No details are guaranteed, they cannot be relied upon for any purpose and they do not form part of any agreement. No liability is taken for any error, omission or misstatement. A party must rely upon its own inspection(s). Powered by www.propertybox.io


william
h brown



view this property online williamhbrown.co.uk/Property/NOR143586



welcome to

Hawthorns Lower Green, Freethorpe Norwich

- Four/five generously sized bedrooms, each well-proportioned
- Excellent indoor-outdoor flow
- Modern and spacious open-plan kitchen/dining room
- Sleek state of the art appliances
- Ample off road parking on the well sized driveway.

Tenure: Freehold EPC Rating: D
Council Tax Band: D

offers in excess of

£575,000



Please note the marker reflects the
postcode not the actual property

view this property online williamhbrown.co.uk/Property/NOR143586



Property Ref:
NOR143586 - 0004

1. MONEY LAUNDERING REGULATIONS Intending purchasers will be asked to produce identification documentation at a later stage and we would ask for your co-operation in order that there is no delay in agreeing the sale. 2. These particulars do not constitute part or all of an offer or contract. 3. The measurements indicated are supplied for guidance only and as such must be considered incorrect. Potential buyers are advised to recheck measurements before committing to any expense. 4. We have not tested any apparatus, equipment, fixtures or services and it is in the buyers interest to check the working condition of any appliances. 5. Where an EPC, or a Home Report (Scotland only) is held for this property, it is available for inspection at the branch by appointment. If you require a printed version of a Home Report, you will need to pay a reasonable production charge reflecting printing and other costs. 6. We are not able to offer an opinion either written or verbal on the content of these reports and this must be obtained from your legal representative. 7. Whilst we take care in preparing these reports, a buyer should ensure that his/her legal representative confirms as soon as possible all matters relating to title including the extent and boundaries of the property and other important matters before exchange of contracts.

William H Brown is a trading name of Sequence (UK) Limited which is registered in England and Wales under company number 4268443, Registered Office is Cumbria House, 16-20 Hockliffe Street, Leighton Buzzard, Bedfordshire, LU7 1GN. VAT Registration Number is 500 2481 05.



william h brown



01603 760044



norwich@williamhbrown.co.uk



5 Bank Plain, NORWICH, Norfolk, NR2 4SF



williamhbrown.co.uk