



Hoveton Place, Badersfield, Norwich, NR10 5JS

welcome to

Hoveton Place, Badersfield, Norwich

This well-presented, two bedroom terraced house with low maintenance garden and 1 allocated parking space, would make an ideal first time buy or investment purchase!



Description

Situated in the popular North Norfolk village of Badersfield and approximately equal distance to Norwich, North Walsham and Aylsham, this Mid-Terraced House would make an ideal first time buy or investment purchase.

The property offers accommodation comprising Kitchen/Diner, Lounge and Conservatory on the ground floor. On the first floor you will find two double Bedrooms and a Family Bathroom.

Externally, the property boasts a low maintenance rear garden and 1 allocated parking space. Within walking distance of the property is a village shop, public house and public parks and countryside walks.

Kitchen / Diner

16' 5" x 9' 2" (5.00m x 2.79m)
Entrance door, fitted kitchen with range of wall and base units with work surfaces over, electric oven, gas hob with cooker hood above, one and a half sized stainless steel sink drainer, gas central heating boiler, extractor fan, plumbing for washing machine and space for fridge/freezer. Under stairs cupboard, radiator, tiled splash backs, double glazed window to front aspect and Amtico flooring.

Lounge

13' 3" x 12' 3" (4.04m x 3.73m)
Double glazed window to rear aspect, television and telephone points, radiator and carpeted flooring.

Conservatory

13' 10" x 7' 8" (4.22m x 2.34m)
Brick base with uPVC windows and doors, tinted glass roof, television point, radiator and laminated flooring.

First Floor Landing

Doors to Bedrooms & Bathroom.

Bedroom One

13' 6" x 11' 8" (4.11m x 3.56m)
Double glazed window to rear aspect, fitted wardrobes, television point, radiator and carpeted flooring.

Bedroom Two

9' 10" x 9' 3" (3.00m x 2.82m)
Double glazed window to front aspect, fitted clothes rails, radiator and carpeted flooring.

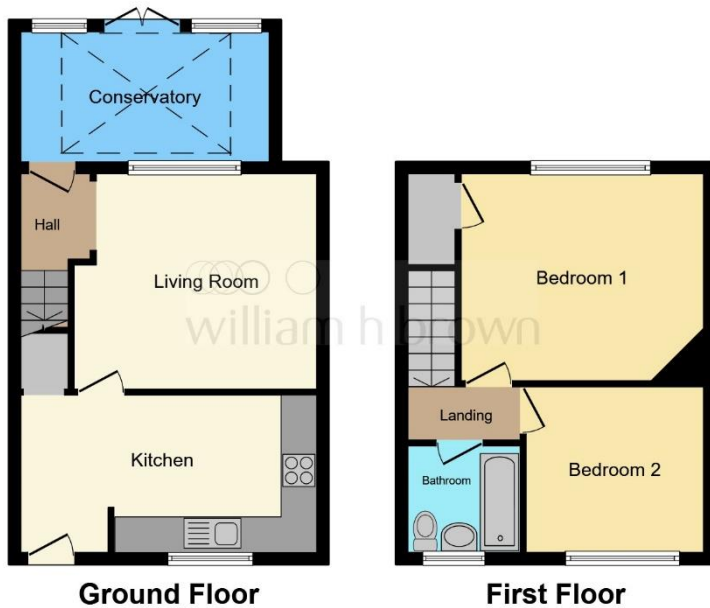
Bathroom

Suite comprising bath with mixer taps and shower over, WC, wash hand basin, shaver point, extractor fan, double glazed window to front aspect, radiator and vinyl flooring.

Exterior

Approach path to the front door.

At the rear of the property there is a low maintenance garden enclosed by fencing and laid to lawn with patio and garden shed. The property further benefits from 1 allocated parking space.



This floor plan is for illustrative purposes only. It is not drawn to scale. Any measurements, floor areas (including any total floor area), openings and orientation are approximate. No details are guaranteed, they cannot be relied upon for any purpose and they do not form part of any agreement. No liability is taken for any error, omission or misstatement. A party must rely upon its own inspection(s). Powered by www.focalagent.com



view this property online williamhbrown.co.uk/Property/NWM108987



welcome to

Hoveton Place, Badersfield, Norwich

- Ideal First Time Buy or Investment
- Two Double Bedrooms
- Conservatory
- Low Maintenance Garden
- 1 Allocated Parking Space

Tenure: Freehold EPC Rating: C

guide price

£200,000



Please note the marker reflects the postcode not the actual property

view this property online williamhbrown.co.uk/Property/NWM108987



Property Ref:
NWM108987 - 0002

1. MONEY LAUNDERING REGULATIONS Intending purchasers will be asked to produce identification documentation at a later stage and we would ask for your co-operation in order that there is no delay in agreeing the sale. 2. These particulars do not constitute part or all of an offer or contract. 3. The measurements indicated are supplied for guidance only and as such must be considered incorrect. Potential buyers are advised to recheck measurements before committing to any expense. 4. We have not tested any apparatus, equipment, fixtures or services and it is in the buyer's interest to check the working condition of any appliances. 5. Where an EPC, or a Home Report (Scotland only) is held for this property, it is available for inspection at the branch by appointment. If you require a printed version of a Home Report, you will need to pay a reasonable production charge reflecting printing and other costs. 6. We are not able to offer an opinion either written or verbal on the content of these reports and this must be obtained from your legal representative. 7. Whilst we take care in preparing these reports, a buyer should ensure that his/her legal representative confirms as soon as possible all matters relating to title including the extent and boundaries of the property and other important matters before exchange of contracts.

William H Brown is a trading name of Sequence (UK) Limited which is registered in England and Wales under company number 4268443, Registered Office is Cumbria House, 16-20 Hockliffe Street, Leighton Buzzard, Bedfordshire, LU7 1GN. VAT Registration Number is 500 2481 05.



william h brown



01692 402861



NorthWalsham@williamhbrown.co.uk



16 Market Street, NORTH WALSHAM, Norfolk,
NR28 9BZ



williamhbrown.co.uk