



Elland Road, Morley Leeds LS27 7QY

welcome to

Elland Road, Morley Leeds

FABULOUS FOUR BEDROOM END TERRACE HOME, TASTEFULLY DECORATED throughout, BASEMENT CELLAR, COSY LIVING ROOM, KITCHEN/DINER, two first floor bedrooms, ENSUITE to master bedroom and HOUSE BATHROOM, two further second bedrooms, with a further ENSUITE. ENCLOSED LAWNED GARDEN.

Lounge

13' 11" x 14' 9" (4.24m x 4.50m)

uPVC double glazed window and door to the front, gas central heating radiator, wood burner set within the chimney breast, door leading through to the staircase and kitchen.

Kitchen/Diner

14' 9" x 13' 1" (4.50m x 3.99m)

Has a fully fitted shaker style kitchen with a range of wall and base units with complementary work surfaces over, incorporating a Belfast sink, integrated oven and dishwasher, electric hob, space for a washing machine, tumble dryer and fridge freezer. Gas central heating radiator, uPVC double glazed window and door to the rear, wood burner set within the chimney breast and Yorkshire stone flooring. Stairs leading to the basement cellar.

Cellar Room One

9' 11" x 8' (3.02m x 2.44m)

Coal Store

8' x 4' 9" (2.44m x 1.45m)

First Floor Landing

Access to bedrooms one and two and the house bathroom. Stairs leading to the second floor.

Bedroom One

13' 11" x 11' 8" (4.24m x 3.56m)

uPVC double glazed window to the front, fitted wardrobe, gas central heating radiator, access into the ensuite and closet room.

Ensuite

Shower cubicle, low level flush WC, wash hand basin, tiled floor.

Bedroom Two

12' 1" x 14' 10" (3.68m x 4.52m)

uPVC double glazed window, feature fireplace, gas central heating radiator.

House Bathroom

A three piece bathroom suite comprising of bath with shower, low level flush WC, wash hand basin, heated towel rail, uPVC double glazed window to the side.

Bedroom Three

14' 9" x 10' 9" (4.50m x 3.28m)

Double glazed skylight, gas central heating radiator, access into the ensuite.

Ensuite

Shower cubicle, low level flush WC, wash hand basin, heated towel rail, uPVC double glazed window to the side.

Bedroom Four

8' 5" x 14' 7" (2.57m x 4.45m)

Double glazed skylight, gas central heating radiator.

Exterior

Enclosed lawned garden to the rear.





view this property online williamhbrown.co.uk/Property/MLY111501



welcome to

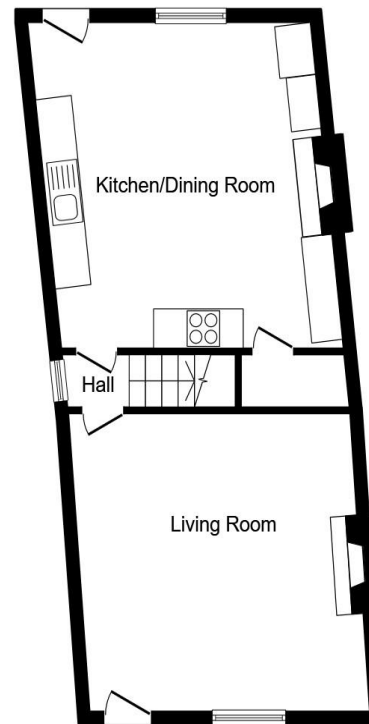
Elland Road, Morley Leeds

- Four bedroom end through terrace
- Enclosed lawned garden
- Shaker style fitted kitchen/diner
- Basement cellar
- Two ensuites and house bathroom

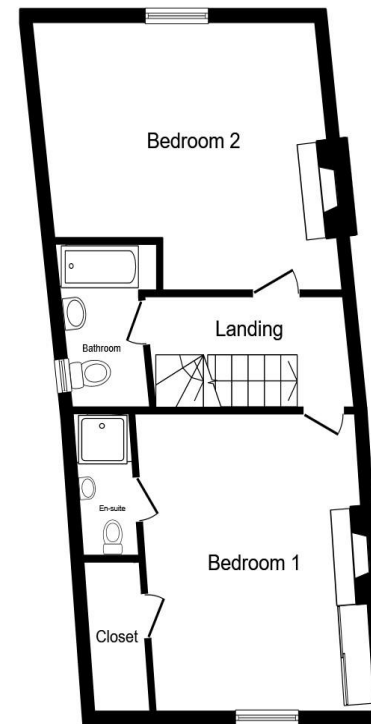
Tenure: Freehold EPC Rating: E

Council Tax Band: B

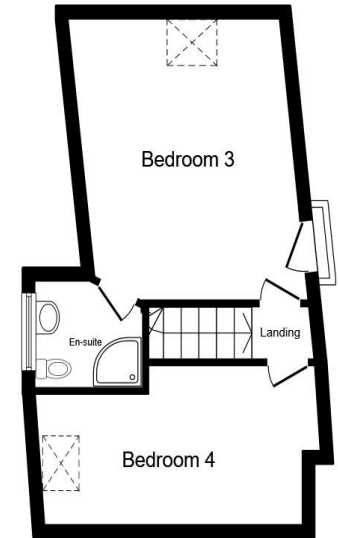
£300,000



Ground Floor



First Floor



Second Floor

Total floor area 130.5 m² (1,405 sq.ft.) approx

This floor plan is for illustrative purposes only. It is not drawn to scale. Any measurements, floor areas (including any total floor area), openings and orientation are approximate. No details are guaranteed, they cannot be relied upon for any purpose and they do not form part of any agreement. No liability is taken for any error, omission or misstatement. A party must rely upon its own inspection(s). Powered by www.propertybox.io



view this property online williamhbrown.co.uk/Property/MLY111501



Property Ref:
MLY111501 - 0003

1. MONEY LAUNDERING REGULATIONS Intending purchasers will be asked to produce identification documentation at a later stage and we would ask for your co-operation in order that there is no delay in agreeing the sale. 2. These particulars do not constitute part or all of an offer or contract. 3. The measurements indicated are supplied for guidance only and as such must be considered incorrect. Potential buyers are advised to recheck measurements before committing to any expense. 4. We have not tested any apparatus, equipment, fixtures or services and it is in the buyers interest to check the working condition of any appliances. 5. Where an EPC, or a Home Report (Scotland only) is held for this property, it is available for inspection at the branch by appointment. If you require a printed version of a Home Report, you will need to pay a reasonable production charge reflecting printing and other costs. 6. We are not able to offer an opinion either written or verbal on the content of these reports and this must be obtained from your legal representative. 7. Whilst we take care in preparing these reports, a buyer should ensure that his/her legal representative confirms as soon as possible all matters relating to title including the extent and boundaries of the property and other important matters before exchange of contracts.

William H Brown is a trading name of Sequence (UK) Limited which is registered in England and Wales under company number 4268443, Registered Office is Cumbria House, 16-20 Hockliffe Street, Leighton Buzzard, Bedfordshire, LU7 1GN. VAT Registration Number is 500 2481 05.

 **william h brown**



0113 253 7100



morley@williamhbrown.co.uk



80 Queen Street, Morley, LEEDS, West
Yorkshire, LS27 9BP



williamhbrown.co.uk