



Siegen Way, Morley Leeds LS27 8FL

welcome to

Siegen Way, Morley Leeds

MODERN and WELL PRESENTED THREE bedroom END THREE STOREY TOWN HOUSE, DOWNSTAIRS WC, LIVING ROOM, KITCHEN/DINER, two first floor bedrooms and HOUSE BATHROOM, master bedroom with ENSUITE to the second floor. DRIVEWAY to the side and an ENCLOSED LAWNED REAR GARDEN with TWO WOODEN SHEDS.

Please Note:

The property has a green space charge of £180.00 per annum, for more information please speak to your conveyancer.

Entrance Porch

Composite door to the front, uPVC double glazed windows, gas central heating radiator and door leading into the living room.

Living Room

14' 7" x 11' 8" (4.45m x 3.56m)
uPVC double glazed window to the front, gas central heating radiator, storage cupboard, entertainment feature wall, door leading to the staircase and door leading into the inner hall.

Inner Hall

Doors leading to the downstairs WC and kitchen/diner.

Downstairs Wc

Having a low level flush WC, wash hand basin, gas central heating radiator.

Kitchen/Diner

7' 8" x 11' 10" (2.34m x 3.61m)
Having a fully fitted kitchen with a range of wall and base mounted units with complementary work surfaces over, incorporating sink and drainer, electric oven and gas hob, integrated fridge freezer and washing machine, space for a dishwasher, gas central heating radiator, uPVC double glazed window and uPVC double glazed French doors leading out the rear garden.

First Floor Landing

Gas central heating radiator. Access to bedrooms two and three and the house bathroom. Stairs

leading to the second floor landing.

Bedroom Two

10' 5" x 11' 9" (3.17m x 3.58m)
uPVC double glazed window to the front, gas central heating radiator.

Bedroom Three

8' 10" x 11' 10" MAX (2.69m x 3.61m MAX)
uPVC double glazed window to the rear, gas central heating radiator.

House Bathroom

A three piece bathroom suite comprising of bath with taps and shower over, low level flush WC, wash hand basin, tiled walls to all visible areas, uPVC double glazed window to the side.

Second Floor Landing

Storage cupboard and door leading into the master bedroom.

Master Bedroom

10' 9" x 8' 5" (3.28m x 2.57m)
uPVC double glazed window to the front, gas central heating radiator, loft access and access into the ensuite.

Ensuite

Having a shower cubicle, low level flush WC, wash hand basin, part tiled walls, gas central heating radiator, double glazed wooden skylight.

Exterior

Driveway to the side providing off street parking and to the rear is an enclosed lawned garden with fence boundaries and two wooden sheds, one with electrics and aircon system.





view this property online williamhbrown.co.uk/Property/MLY111183



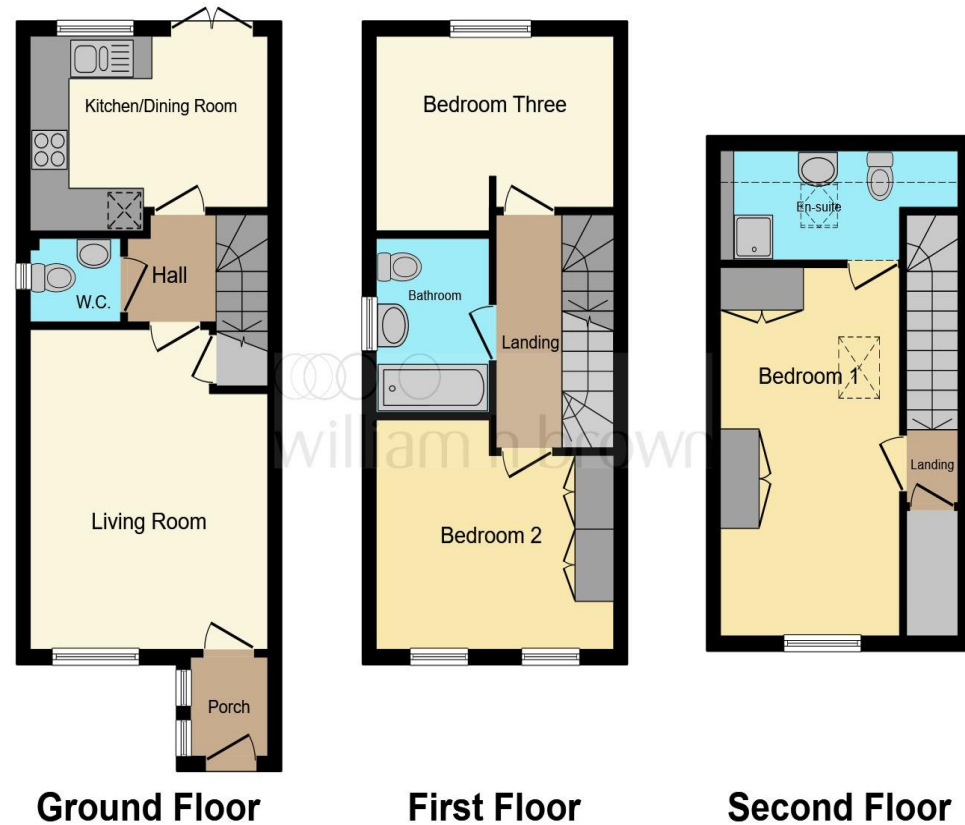
welcome to

Siegen Way, Morley Leeds

- Three bedroom end three storey town house
- Downstairs WC
- Ensuite to master bedroom
- Enclosed lawned garden
- Driveway to the side

Tenure: Freehold EPC Rating: B
Council Tax Band: C

offers over
£260,000



This floor plan is for illustrative purposes only. It is not drawn to scale. Any measurements, floor areas (including any total floor area), openings and orientation are approximate. No details are guaranteed, they cannot be relied upon for any purpose and they do not form part of any agreement. No liability is taken for any error, omission or misstatement. A party must rely upon its own inspection(s). Powered by www.focalagent.com

view this property online williamhbrown.co.uk/Property/MLY111183



Property Ref:
MLY111183 - 0004

1. MONEY LAUNDERING REGULATIONS Intending purchasers will be asked to produce identification documentation at a later stage and we would ask for your co-operation in order that there is no delay in agreeing the sale. 2. These particulars do not constitute part or all of an offer or contract. 3. The measurements indicated are supplied for guidance only and as such must be considered incorrect. Potential buyers are advised to recheck measurements before committing to any expense. 4. We have not tested any apparatus, equipment, fixtures or services and it is in the buyers interest to check the working condition of any appliances. 5. Where an EPC, or a Home Report (Scotland only) is held for this property, it is available for inspection at the branch by appointment. If you require a printed version of a Home Report, you will need to pay a reasonable production charge reflecting printing and other costs. 6. We are not able to offer an opinion either written or verbal on the content of these reports and this must be obtained from your legal representative. 7. Whilst we take care in preparing these reports, a buyer should ensure that his/her legal representative confirms as soon as possible all matters relating to title including the extent and boundaries of the property and other important matters before exchange of contracts.

William H Brown is a trading name of Sequence (UK) Limited which is registered in England and Wales under company number 4268443, Registered Office is Cumbria House, 16-20 Hockliffe Street, Leighton Buzzard, Bedfordshire, LU7 1GN. VAT Registration Number is 500 2481 05.

william h brown



0113 253 7100



morley@williamhbrown.co.uk



80 Queen Street, Morley, LEEDS, West
Yorkshire, LS27 9BP



williamhbrown.co.uk