



Murray Way, Leeds LS10 4GA

welcome to

Murray Way, Leeds

NO ONWARD CHAIN, fabulous FOUR bedroom DETACHED FAMILY HOME having a DOWNSTAIRS WC, SPACIOUS LIVING ROOM, GREAT SIZED KITCHEN/DINER with UTILITY ROOM, ENSUITE to master bedroom and TWO FURTHER BATHROOMS. DRIVEWAY, GARAGE and FABULOUS REAR GARDEN with a SUMMER HOUSE.

Entrance Hall

Composite double glazed door to the front, gas central heating radiator, tiled flooring, stairs leading to the first floor landing and access into the living room, downstairs WC and kitchen/diner.

Living Room

17' 5" x 10' 1" (5.31m x 3.07m)

A spacious room with a uPVC double glazed window to the front, two gas central heating radiators and uPVC double glazed French doors to the rear, leading out to the rear garden.

Downstairs Wc

Having a low level flush WC, wash hand basin, gas central heating radiator.

Kitchen/Diner

23' 11" x 9' 5" (7.29m x 2.87m)

A fabulous sized room having a fully fitted kitchen with a range of wall and base units with complementary work surfaces over, incorporating sink and drainer, electric oven, gas hob, fitted extractor fan, integrated dishwasher, space for fridge freezer, gas central heating radiator, uPVC double glazed windows to the front and rear and door leading into the utility room.

Utility Room

3' 10" x 6' (1.17m x 1.83m)

Base units with sink and drainer, integrated washing machine, tiled walls and floor, gas central heating radiator, Composite double glazed door to the rear.

First Floor Landing

uPVC double glazed window, gas central heating radiator, storage cupboard housing the water heater and access to two bedrooms and the house bathroom. Stairs leading to the second floor.

Master Bedroom

17' 5" x 10' 1" (5.31m x 3.07m)

uPVC double glazed windows to both front and rear, two gas central heating radiators, fitted wardrobes and access into the ensuite.

Ensuite

A modern fitted ensuite comprising of a shower cubicle, low level flush WC, wash hand basin with vanity unit, chrome heated towel rail and tiled floor and walls to all visible areas.

Bedroom Two

9' 1" x 10' 8" (2.77m x 3.25m)

uPVC double glazed window to the rear, gas central heating radiator.

House Bathroom

A three piece bathroom suite comprising of bath with taps, low level flush WC, wash hand basin, gas central heating radiator, uPVC double glazed window.

Second Floor Landing

Spacious landing with a wooden framed double glazed window, gas central heating radiator, loft access and access to two further bedrooms and a shower room.

Bedroom Three

17' 4" x 10' 2" (5.28m x 3.10m)

uPVC double glazed window to the front, TV ariel, two gas central heating radiators, wooden framed double glazed skylight.

Bedroom Four

13' 2" MAX x 9' (4.01m MAX x 2.74m)

Wooden framed double glazed skylight and gas



central heating radiator.

Shower Room

Having a shower cubicle, low level flush WC, wash hand basin, tiled floor and walls, gas central heating radiator.

Exterior

Tandem driveway to the side, providing parking for two cars, leading to the single garage and to the rear is a fabulous sized lawned and decked garden with fence boundaries and a summer house currently used as bar, a perfect space for entertaining and all the family to enjoy.



view this property online williamhbrown.co.uk/Property/MLY111093



welcome to

Murray Way, Leeds

- Four double bedrooms
- Great sized kitchen/diner
- Downstairs WC & Utility room
- Ensuite to master bedroom
- Well maintained rear garden with summer house currently used as a bar

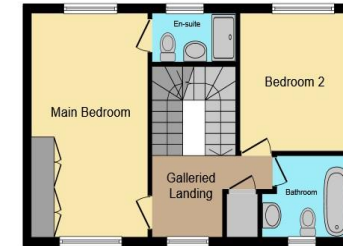
Tenure: Freehold EPC Rating: C

Council Tax Band: E

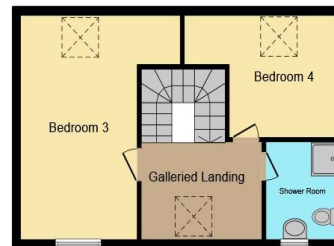
£415,000



Ground Floor



First Floor



Second Floor



Outbuilding

william h brown

This floor plan is for illustrative purposes only. It is not drawn to scale. Any measurements, floor areas (including any total floor area), openings and orientation are approximate. No details are guaranteed, they cannot be relied upon for any purpose and they do not form part of any agreement. No liability is taken for any error, omission or misstatement. A party must rely upon its own inspection(s). Powered by www.focalagent.com

view this property online williamhbrown.co.uk/Property/MLY111093



Property Ref:
MLY111093 - 0003

1. MONEY LAUNDERING REGULATIONS Intending purchasers will be asked to produce identification documentation at a later stage and we would ask for your co-operation in order that there is no delay in agreeing the sale. 2. These particulars do not constitute part or all of an offer or contract. 3. The measurements indicated are supplied for guidance only and as such must be considered incorrect. Potential buyers are advised to recheck measurements before committing to any expense. 4. We have not tested any apparatus, equipment, fixtures or services and it is in the buyers interest to check the working condition of any appliances. 5. Where an EPC, or a Home Report (Scotland only) is held for this property, it is available for inspection at the branch by appointment. If you require a printed version of a Home Report, you will need to pay a reasonable production charge reflecting printing and other costs. 6. We are not able to offer an opinion either written or verbal on the content of these reports and this must be obtained from your legal representative. 7. Whilst we take care in preparing these reports, a buyer should ensure that his/her legal representative confirms as soon as possible all matters relating to title including the extent and boundaries of the property and other important matters before exchange of contracts.

William H Brown is a trading name of Sequence (UK) Limited which is registered in England and Wales under company number 4268443, Registered Office is Cumbria House, 16-20 Hockliffe Street, Leighton Buzzard, Bedfordshire, LU7 1GN. VAT Registration Number is 500 2481 05.

william h brown



0113 253 7100



morley@williamhbrown.co.uk



80 Queen Street, Morley, LEEDS, West
Yorkshire, LS27 9BP



williamhbrown.co.uk