



Harthill Parade, Morley Leeds LS27 7ET

welcome to

Harthill Parade, Morley Leeds

THREE bedroom SEMI DETACHED accommodation, set on a corner plot position in the popular Village of Gildersome and having easy access to motorway links, local amenities and Morley Town Centre, with a DRIVEWAY and GARDENS to three sides.

##Invalid Field Name##

Entrance Hall

Composite double glazed door to the front, uPVC double glazed window to the side, stairs leading to the first floor landing and door leading through to the living room.

Living Room

12' 9" x 12' 7" (3.89m x 3.84m)

uPVC double glazed window to the front, gas central heating radiator and door leading through to the kitchen.

Kitchen

8' 9" x 15' 5" (2.67m x 4.70m)

Has a fully fitted kitchen with a range of wall and base mounted units with complementary work surfaces over, incorporating sink and drainer with mixer tap, integrated oven with induction hob and fitted extractor fan, integrated washing machine, fridge freezer and slim line dishwasher, gas central heating radiator, uPVC double glazed window to the rear and uPVC double glazed French doors to the side. Door leading into the downstairs WC.

Downstairs Wc

Having a low level flush WC, wash hand basin, chrome heated towel rail, uPVC double glazed window to the side.

First Floor Landing

uPVC double glazed window to the side, loft access which is part boarded. Access to all three bedrooms and house bathroom.

Bedroom One

12' 5" x 9' 5" (3.78m x 2.87m)

uPVC double glazed window to the front, gas central heating radiator.

Bedroom Two

9' 3" x 9' 5" (2.82m x 2.87m)

uPVC double glazed window rear, gas central heating radiator, built-in cupboard housing the gas central heating boiler.

Bedroom Three

8' 6" x 5' 11" (2.59m x 1.80m)

uPVC double glazed window to the front, gas central heating radiator.

House Bathroom

A three piece bathroom suite comprising of bath with taps and shower over, low level flush WC, wash hand basin, part tiled walls, gas central heating radiator, uPVC double glazed window to the front.

Exterior

Set on a corner plot with a driveway to the side, pathway to the front leading to the front door, lawned areas to the front and side with mature plants, hedges and trees and to the rear is a decked area, perfect for the summer months.





view this property online williamhbrown.co.uk/Property/MLY110459



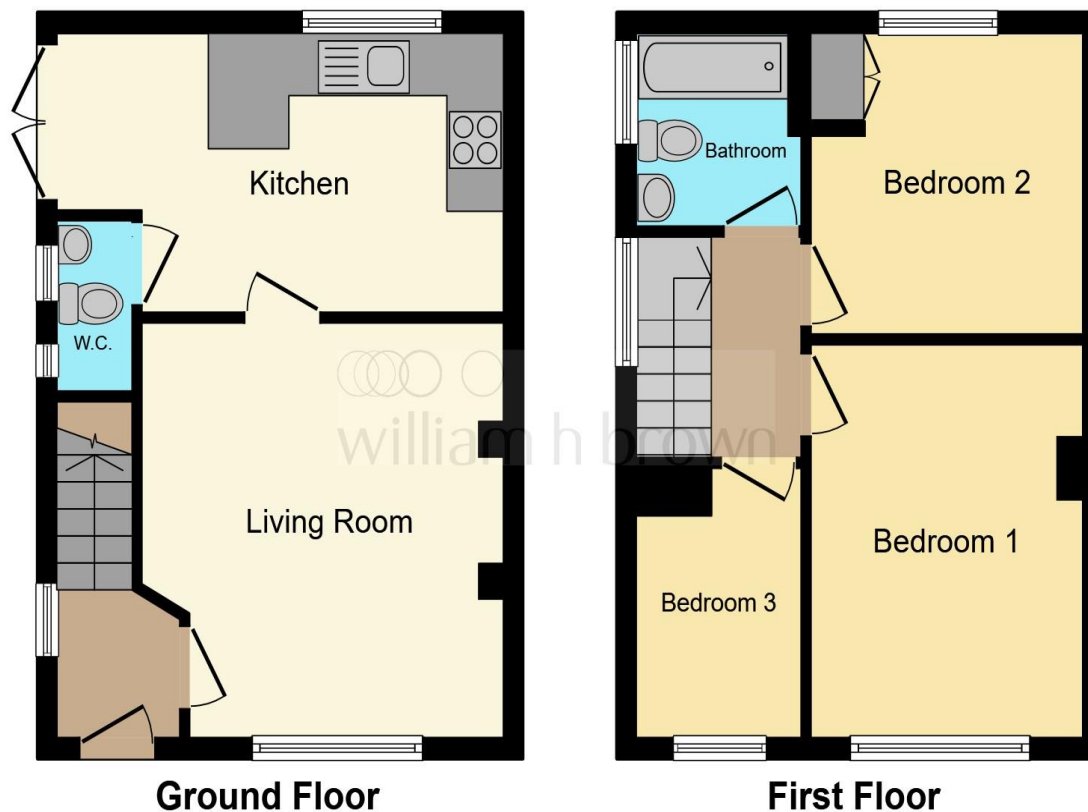
welcome to

Harthill Parade, Morley Leeds

- Three bedroom semi detached accommodation
- Set on a corner plot with gardens to three sides
- Sought after location in Gildersome Village
- Downstairs WC
- Good access to motorway links

Tenure: Freehold EPC Rating: D

£260,000



This floor plan is for illustrative purposes only. It is not drawn to scale. Any measurements, floor areas (including any total floor area), openings and orientation are approximate. No details are guaranteed, they cannot be relied upon for any purpose and they do not form part of any agreement. No liability is taken for any error, omission or misstatement. A party must rely upon its own inspection(s). Powered by www.focalagent.com

view this property online williamhbrown.co.uk/Property/MLY110459



Property Ref:
MLY110459 - 0002

1. MONEY LAUNDERING REGULATIONS Intending purchasers will be asked to produce identification documentation at a later stage and we would ask for your co-operation in order that there is no delay in agreeing the sale. 2. These particulars do not constitute part or all of an offer or contract. 3. The measurements indicated are supplied for guidance only and as such must be considered incorrect. Potential buyers are advised to recheck measurements before committing to any expense. 4. We have not tested any apparatus, equipment, fixtures or services and it is in the buyers interest to check the working condition of any appliances. 5. Where an EPC, or a Home Report (Scotland only) is held for this property, it is available for inspection at the branch by appointment. If you require a printed version of a Home Report, you will need to pay a reasonable production charge reflecting printing and other costs. 6. We are not able to offer an opinion either written or verbal on the content of these reports and this must be obtained from your legal representative. 7. Whilst we take care in preparing these reports, a buyer should ensure that his/her legal representative confirms as soon as possible all matters relating to title including the extent and boundaries of the property and other important matters before exchange of contracts.

William H Brown is a trading name of Sequence (UK) Limited which is registered in England and Wales under company number 4268443, Registered Office is Cumbria House, 16-20 Hockliffe Street, Leighton Buzzard, Bedfordshire, LU7 1GN. VAT Registration Number is 500 2481 05.


william h brown



0113 253 7100



morley@williamhbrown.co.uk



80 Queen Street, Morley, LEEDS, West Yorkshire, LS27 9BP



williamhbrown.co.uk