



**Bridge Farm Close, Mildenhall, Bury St. Edmunds, IP28 7FF**

**welcome to**

## **Bridge Farm Close, Mildenhall, Bury St. Edmunds**

14 Bridge Farm Close - We are acting in the sale of this property and have received an offer of £115,000. Any interested parties must submit any higher offers, in writing, to the selling agent before an exchange of contracts takes place. EPC rating: C

### **The Accommodation**

#### **Entrance Hall**

#### **Living Room**

16' x 10' 3" ( 4.88m x 3.12m )

#### **Kitchen**

10' 3" x 6' 5" ( 3.12m x 1.96m )

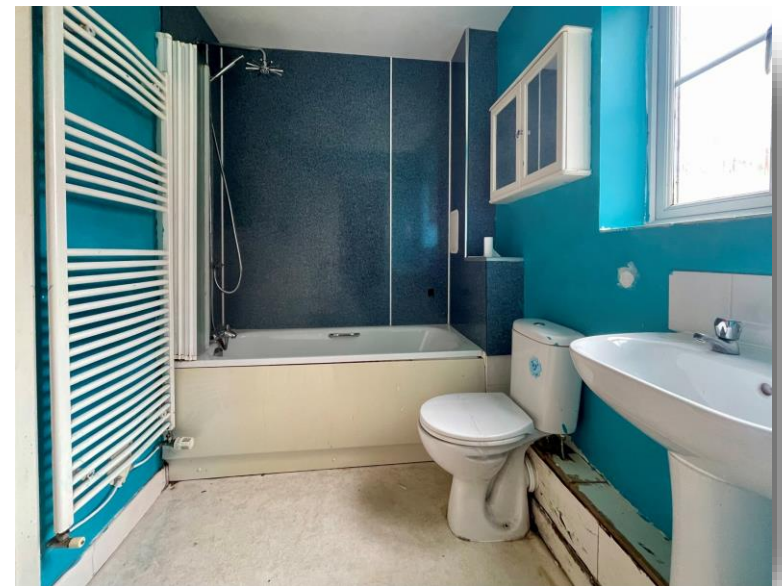
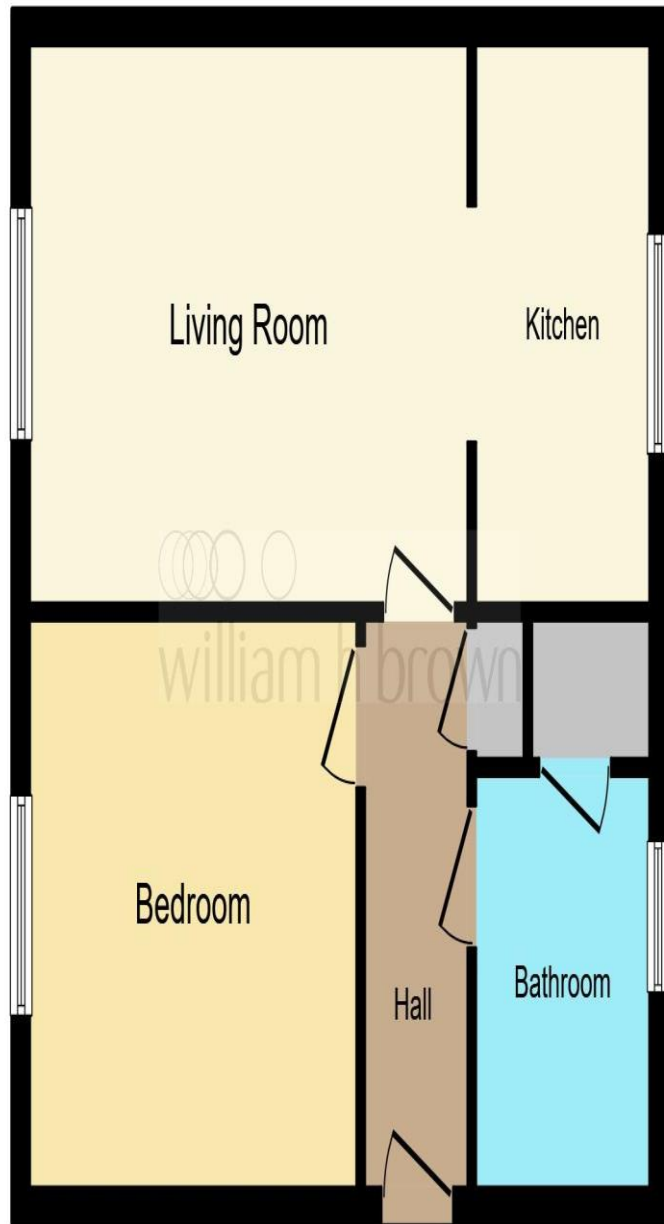
#### **Bedroom**

11' 10" x 10' 6" ( 3.61m x 3.20m )

#### **Bathroom**

7' 6" x 6' 4" ( 2.29m x 1.93m )

#### **Outside Allocated Parking Space**



This floorplan is for illustrative purposes only and is not drawn to scale. Measurements, floor-areas, openings and orientations are approximate. They should not be relied upon for any purpose and do not form any part of an agreement. No liability is taken for any error or mis-statement. All parties must rely on their own inspections.

welcome to

## Bridge Farm Close, Mildenhall, Bury St. Edmunds

- 1 Bedroom Ground Floor Flat
- Circa 475 Sq Ft
- No Onward Chain
- Allocated Parking Space
- Rental potential of £1150 pcm

Tenure: Leasehold EPC Rating: C

This is a Leasehold property. We are awaiting further details about the Term of the lease. For further information please contact the branch. Please note additional fees could be incurred for items such as Leasehold packs.

# £115,000



view this property online [williamhbrown.co.uk/Property/MDH108072](http://williamhbrown.co.uk/Property/MDH108072)



Property Ref:  
MDH108072 - 0005

1. MONEY LAUNDERING REGULATIONS Intending purchasers will be asked to produce identification documentation at a later stage and we would ask for your co-operation in order that there is no delay in agreeing the sale. 2. These particulars do not constitute part or all of an offer or contract. 3. The measurements indicated are supplied for guidance only and as such must be considered incorrect. Potential buyers are advised to recheck measurements before committing to any expense. 4. We have not tested any apparatus, equipment, fixtures or services and it is in the buyers interest to check the working condition of any appliances. 5. Where an EPC, or a Home Report (Scotland only) is held for this property, it is available for inspection at the branch by appointment. If you require a printed version of a Home Report, you will need to pay a reasonable production charge reflecting printing and other costs. 6. We are not able to offer an opinion either written or verbal on the content of these reports and this must be obtained from your legal representative. 7. Whilst we take care in preparing these reports, a buyer should ensure that his/her legal representative confirms as soon as possible all matters relating to title including the extent and boundaries of the property and other important matters before exchange of contracts.

William H Brown is a trading name of Sequence (UK) Limited which is registered in England and Wales under company number 4268443, Registered Office is Cumbria House, 16-20 Hockliffe Street, Leighton Buzzard, Bedfordshire, LU7 1GN. VAT Registration Number is 500 2481 05.



william h brown



01638 713274



Mildenhall@williamhbrown.co.uk



17 High Street, Mildenhall, BURY ST.  
EDMUNDS, Suffolk, IP28 7EQ



[williamhbrown.co.uk](http://williamhbrown.co.uk)