



Ingoldsby Close, March PE15 9NL

welcome to

Ingoldsby Close, March

Get on the Ladder ! ** End Terrace House - Three Bedrooms - En Suite to Bedroom One
Convenient to Town Centre ** Close to Schools - Off Road Parking



Entrance Door

to

Hall

Stairs leading off. Radiator.

Lounge

14' 3" x 11' 4" (4.34m x 3.45m)

Bay window to front. Radiator. Open plan to

Kitchen

11' 7" x 5' 5" (3.53m x 1.65m)

Window to front. Single drainer sink. Electric double oven with ceramic hob and cooker hood above. Plumbing for washing machine. Plumbing for dishwasher. Radiator. Tiled floor.

Conservatory

14' 2" x 13' 4" (4.32m x 4.06m)

Windows to rear and side. Radiator. TV point. Air conditioning unit.

Stairs To First Floor Landing

Window to side. Storage cupboard housing boiler.

Bedroom One

14' 6" x 14' 4" (4.42m x 4.37m)

Skylight to front. Skylight to rear. TV point. Range of fitted wardrobes. Storage to eaves.

En Suite

Skylight to rear. Shower cubicle. Pedestal wash hand basin. Low level wc. Radiator.

Bedroom Two (Ground Floor)

19' 9" x 7' 3" (6.02m x 2.21m)

Windows to front and rear. Two radiators. Loft access. TV point.

Bedroom Three (Ground Floor)

10' 11" x 10' 5" (3.33m x 3.17m)

Window to rear. Radiator. TV point.

Bathroom

Window to rear. Panelled bath. Low level wc. Pedestal wash hand basin. Shaver point. Tiled walls.

Outside

Front garden is open plan with drive to side. Outside sockets. Tap.

Rear garden is enclosed with artificial grass. Outside sockets. Tap.



view this property online williamhbrown.co.uk/Property/MCH112929

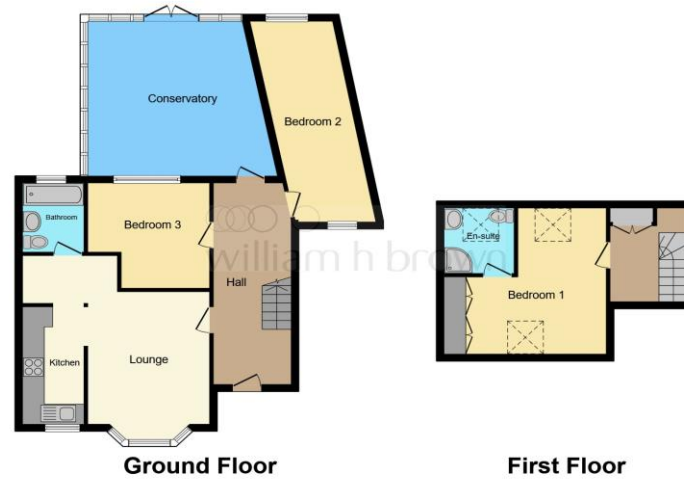


welcome to Ingoldsby Close, March

- End Terrace House
- Three Bedrooms
- En Suite to Bedroom One
- Conservatory
- Off Road Parking

Tenure: Freehold
EPC Rating: C

£240,000



This floor plan is for illustrative purposes only. It is not drawn to scale. Any measurements, floor areas (including any total floor area), openings and orientation are approximate. No details are guaranteed, they cannot be relied upon for any purpose and they do not form part of any agreement. No liability is taken for any error, omission or misstatement. A party must rely upon its own inspection(s). Powered by www.focalagent.com



Please note the marker reflects the postcode not the actual property

view this property online williamhbrown.co.uk/Property/MCH112929



Property Ref:
MCH112929 - 0004

1. MONEY LAUNDERING REGULATIONS Intending purchasers will be asked to produce identification documentation at a later stage and we would ask for your co-operation in order that there is no delay in agreeing the sale. 2. These particulars do not constitute part or all of an offer or contract. 3. The measurements indicated are supplied for guidance only and as such must be considered incorrect. Potential buyers are advised to recheck measurements before committing to any expense. 4. We have not tested any apparatus, equipment, fixtures or services and it is in the buyers interest to check the working condition of any appliances. 5. Where an EPC, or a Home Report (Scotland only) is held for this property, it is available for inspection at the branch by appointment. If you require a printed version of a Home Report, you will need to pay a reasonable production charge reflecting printing and other costs. 6. We are not able to offer an opinion either written or verbal on the content of these reports and this must be obtained from your legal representative. 7. Whilst we take care in preparing these reports, a buyer should ensure that his/her legal representative confirms as soon as possible all matters relating to title including the extent and boundaries of the property and other important matters before exchange of contracts.

William H Brown is a trading name of Sequence (UK) Limited which is registered in England and Wales under company number 4268443, Registered Office is Cumbria House, 16-20 Hockliffe Street, Leighton Buzzard, Bedfordshire, LU7 1GN. VAT Registration Number is 500 2481 05.


william h brown



01354 654545



march@williamhbrown.co.uk



34 High Street, MARCH, Cambridgeshire, PE15 9JR



williamhbrown.co.uk