



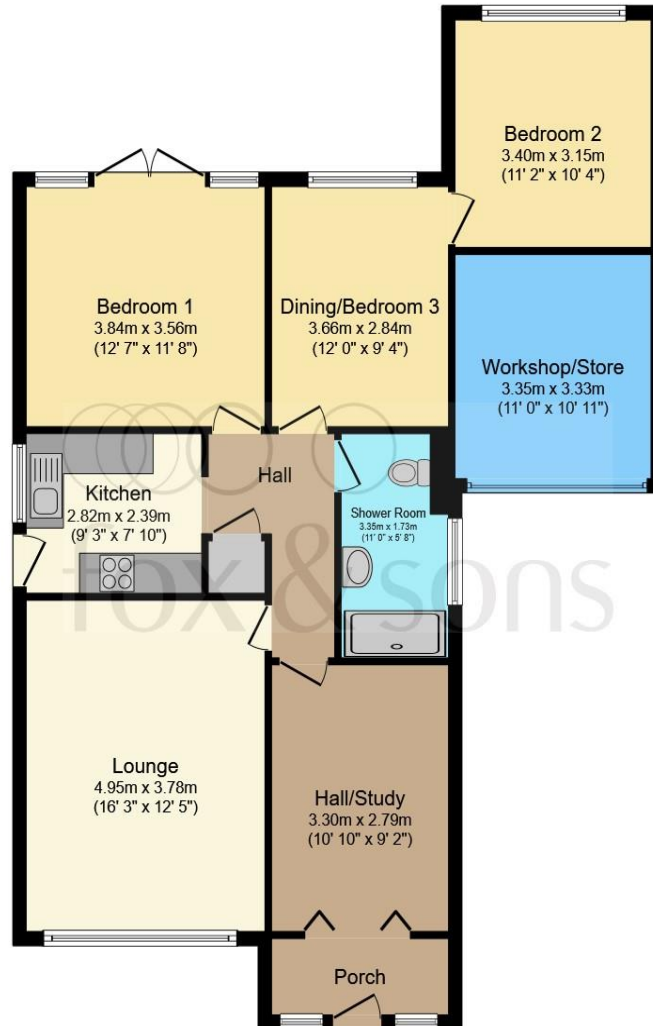
Berwick Close, Eastbourne BN22 0TA

welcome to

Berwick Close, Eastbourne

A beautifully presented three bedroom bungalow situated in a quiet close, with views of the South Downs. Berwick Close is located on the outskirts of Eastbourne, nearby to local shops and transport links. Offering spacious accommodation and off street parking.





- Porch**
- Hall/ Study**
- Lounge**
- Kitchen**
- Bedroom 1**
- Bedroom 2**
- Bedroom 3/ Dining Room**
- Workshop/store**
- Rear Garden**
- Off Street Parking**
- Garage**

Total floor area 101.1 m² (1,088 sq.ft.) approx

This floorplan is for illustrative purposes only and is not drawn to scale. Measurements, floor-areas, openings and orientations are approximate. They should not be relied upon for any purpose and do not form any part of an agreement. No liability is taken for any error or mis-statement. All parties must rely on their own inspections.

Welcome to

Berwick Close, Eastbourne

- DETACHED BUNGALOW
- QUIET LOCATION
- SPACIOUS ACCOMMODATION
- OFF-STREET PARKING & GARAGE
- FULLY TILED KITCHEN & BATHROOM

Tenure: Freehold EPC Rating: C

£425,000



view this property online fox-and-sons.co.uk/Property/PLG106638



Property Ref:
PLG106638 - 0007

1. MONEY LAUNDERING REGULATIONS Intending purchasers will be asked to produce identification documentation at a later stage and we would ask for your co-operation in order that there is no delay in agreeing the sale. 2. These particulars do not constitute part or all of an offer or contract. 3. The measurements indicated are supplied for guidance only and as such must be considered incorrect. Potential buyers are advised to recheck measurements before committing to any expense. 4. We have not tested any apparatus, equipment, fixtures or services and it is in the buyers interest to check the working condition of any appliances. 5. Where an EPC, or a Home Report (Scotland only) is held for this property, it is available for inspection at the branch by appointment. If you require a printed version of a Home Report, you will need to pay a reasonable production charge reflecting printing and other costs. 6. We are not able to offer an opinion either written or verbal on the content of these reports and this must be obtained from your legal representative. 7. Whilst we take care in preparing these reports, a buyer should ensure that his/her legal representative confirms as soon as possible all matters relating to title including the extent and boundaries of the property and other important matters before exchange of contracts.

Fox & Sons is a trading name of Sequence (UK) Limited which is registered in England and Wales under company number 4268443, Registered Office is Cumbria House, 16-20 Hockliffe Street, Leighton Buzzard, Bedfordshire, LU7 1GN. VAT Registration Number is 500 2481 05.



Please note the marker reflects the postcode not the actual property



01323 486561



polegate@fox-and-sons.co.uk



56A High Street, POLEGATE, East Sussex, BN26 6AD



fox-and-sons.co.uk