



**Sharter Drive, Loughborough**

**welcome to**

## **Sharter Drive, Loughborough**

Modern five bedroom detached home with flexible three-storey layout and gated access to driveway. Spacious lounge, open-plan dining kitchen, utility, WC. Top floor principal suite with skylit sitting area and modern en-suite, a master bedroom with en-suite and three well-proportioned bedrooms.

### **Entrance**

Entrance to the property is via steps up to a upvc double glazed front door to entrance hallway. The entrance hallway has vinyl flooring, stairs to the first floor and doors to all ground floor rooms.

### **Lounge**

22' x 11' 2" ( 6.71m x 3.40m )

The lounge has a upvc bay window to the front elevation, electric fireplace, upvc double doors leading to the rear garden, two radiators, electric fireplace and carpeted flooring.

### **Reception Room**

11' 2" x 10' 6" ( 3.40m x 3.20m )

Reception room offers a double-glazed bay window to the front, carpet, radiator and offers a versatile space to be utilised as a snug, office or separate dining room.

### **Open Plan Kitchen/Dining Area**

22' 4" x 14' 9" ( 6.81m x 4.50m )

A fantastic open-plan dining kitchen designed for modern family living. The kitchen is fitted with classic wooden cabinetry, ample worktop space, a gas hob, double oven, and integrated appliances. The room accommodates a full-sized dining table which converts to a pool table, with an additional sitting nook that makes this space ideal for cooking, dining, and socialising. Large windows and patio doors ensure the area is beautifully light.

### **Utility Room**

A practical separate utility room with fitted units matching the kitchen and space for laundry appliances. An exterior door offers easy access to the garden.

### **Ground Floor Wc**

A downstairs cloakroom fitted with a modern white WC and washbasin.

### **Loft Conversion**

31' 2" x 12' ( 9.50m x 3.66m )

A superb top-floor principal suite offering a private, peaceful retreat. The spacious bedroom features characterful sloping ceilings, skylight windows, and plenty of room for freestanding furniture and access to the ensuite.

### **En Suite**

A beautifully designed en-suite shower room with a modern corner shower, white suite, and elegant tiling. A skylight, spotlights and heated towel rail.

### **Master Bedroom**

15' 1" x 11' 10" ( 4.60m x 3.61m )

A generously sized double bedroom, access to ensuite, fitted wardrobe, double glazed window to the side elevation.

### **Ensuite**

The second bedroom offers access to an ensuite with low level wc and handwash vanity unit, shower cubicle, heated towel rail and tiled walls.







### Bedroom Two

11' 6" x 10' 10" ( 3.51m x 3.30m )

Bedroom two offers fitted storage over bed, carpet, double glazed window to the front, radiator,

### Bedroom Three

12' 2" x 10' 10" ( 3.71m x 3.30m )

Bedroom three offers walk in wardrobe, carpeted flooring, radiator and a window to the front elevation.

### Bedroom Four

9' 6" x 9' 6" ( 2.90m x 2.90m )

Bedroom four offers a versatile space to be utilised as a fifth bedroom, office or dressing room, with carpet, radiator and a window to the rear.

### Family Bathroom

A stylish contemporary bathroom complete with a white three-piece suite. Features include a shower-over-bath, modern tiling, a heated towel rail, and a vanity area.

### Outside

Attractive frontage with a bay window, landscaped approach, and driveway parking for three cars leading to a detached garage access via electric gates. The rear garden offers stone floor finish, landscaped lawn, upper patio seating area, planted borders, hot and cold tap. Solar panels on the roof provide added efficiency and modern appeal.



***view this property online*** [williamhbrown.co.uk/Property/LBH115601](http://williamhbrown.co.uk/Property/LBH115601)



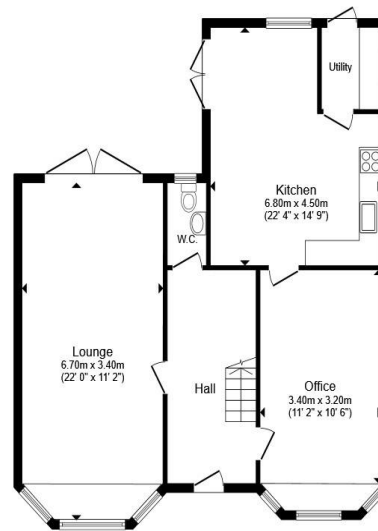
welcome to

## Sharter Drive, Loughborough

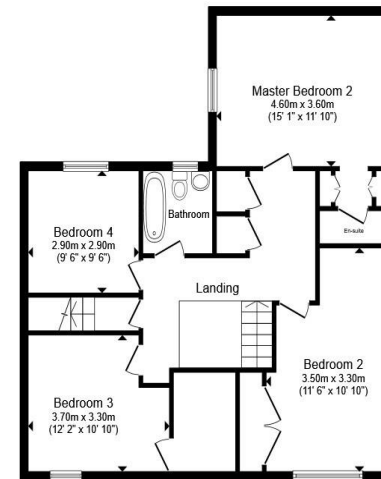
- Detached family home arranged over three floors
- Large Open-plan Dining Kitchen with Double Oven & Gas Hob
- Separate Utility Room & Ground Floor WC
- Two Master Bedrooms with Ensuites
- Lounge with Feature Fireplace & French Doors to Garden

Tenure: Freehold EPC Rating: A  
Council Tax Band: F

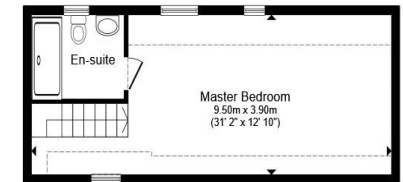
**£525,000**



Ground Floor



First Floor



Second Floor

Total floor area 208.6 m<sup>2</sup> (2,245 sq.ft.) approx

This floor plan is for illustrative purposes only. It is not drawn to scale. Any measurements, floor areas (including any total floor area), openings and orientation are approximate. No details are guaranteed, they cannot be relied upon for any purpose and they do not form part of any agreement. No liability is taken for any error, omission or misstatement. A party must rely upon its own inspection(s). Powered by [www.propertybox.io](http://www.propertybox.io)



**view this property online** [williamhbrown.co.uk/Property/LBH115601](http://williamhbrown.co.uk/Property/LBH115601)



Property Ref:  
LBH115601 - 0010

1. MONEY LAUNDERING REGULATIONS Intending purchasers will be asked to produce identification documentation at a later stage and we would ask for your co-operation in order that there is no delay in agreeing the sale. 2. These particulars do not constitute part or all of an offer or contract. 3. The measurements indicated are supplied for guidance only and as such must be considered incorrect. Potential buyers are advised to recheck measurements before committing to any expense. 4. We have not tested any apparatus, equipment, fixtures or services and it is in the buyers interest to check the working condition of any appliances. 5. Where an EPC, or a Home Report (Scotland only) is held for this property, it is available for inspection at the branch by appointment. If you require a printed version of a Home Report, you will need to pay a reasonable production charge reflecting printing and other costs. 6. We are not able to offer an opinion either written or verbal on the content of these reports and this must be obtained from your legal representative. 7. Whilst we take care in preparing these reports, a buyer should ensure that his/her legal representative confirms as soon as possible all matters relating to title including the extent and boundaries of the property and other important matters before exchange of contracts.

William H Brown is a trading name of Sequence (UK) Limited which is registered in England and Wales under company number 4268443, Registered Office is Cumbria House, 16-20 Hockliffe Street, Leighton Buzzard, Bedfordshire, LU7 1GN. VAT Registration Number is 500 2481 05.

  
william h brown



**01509 214686**



[loughborough@williamhbrown.co.uk](mailto:loughborough@williamhbrown.co.uk)



22-23 Swan Street, LOUGHBOROUGH,  
Leicestershire, LE11 5BL



**[williamhbrown.co.uk](http://williamhbrown.co.uk)**