



**West Gate, Plumpton Green Lewes BN7 3BQ**



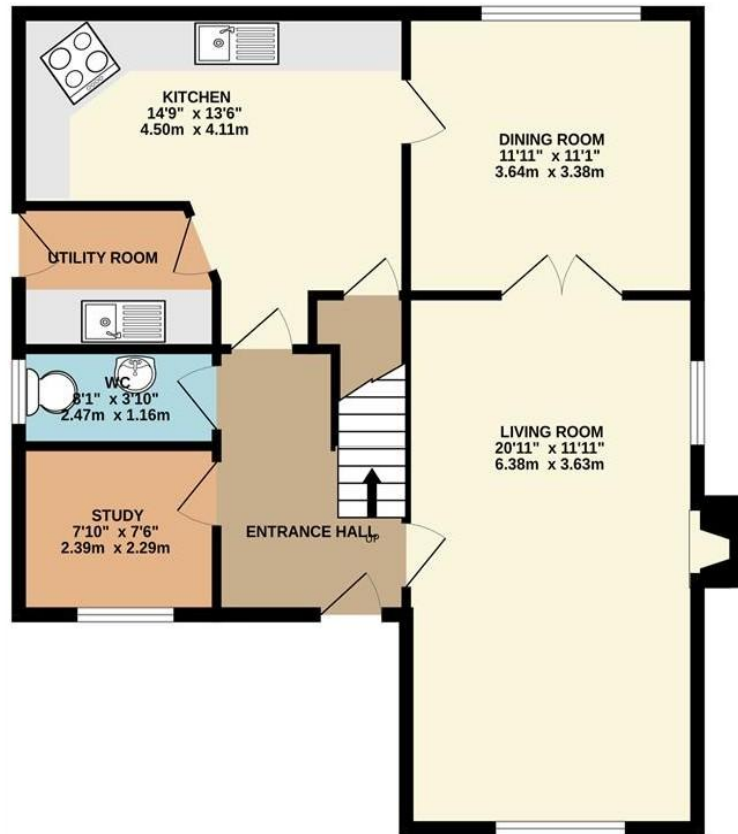
**welcome to**

## **West Gate, Plumpton Green Lewes**

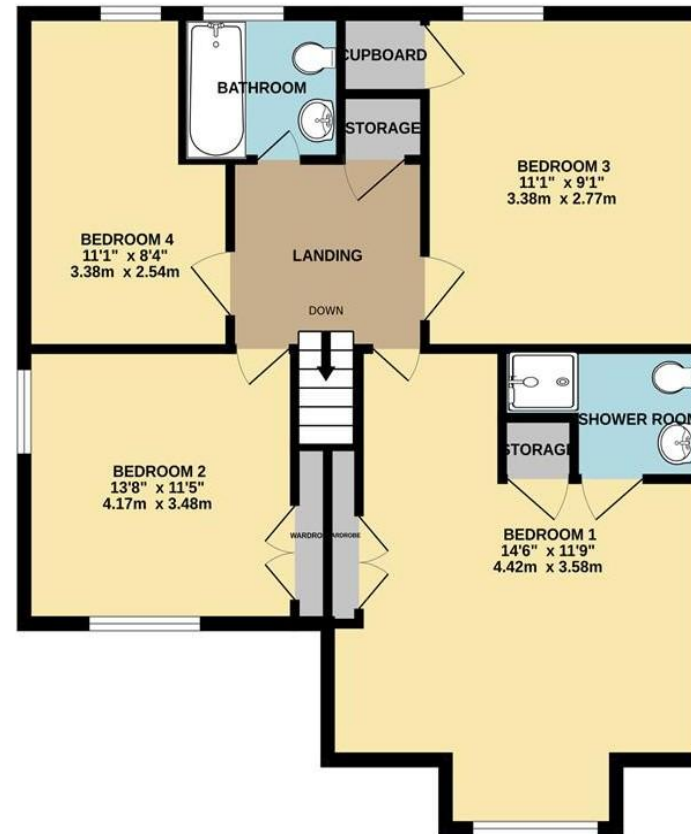
Four Bedroom Detached Family Home with Eco-Extras in Sought-After Village Location. This is a rare opportunity to acquire a ready-to-move-into family home that seamlessly combines village charm with modern, sustainable living. Early viewing is highly recommended.



GROUND FLOOR  
759 sq.ft. (70.5 sq.m.) approx.



1ST FLOOR  
769 sq.ft. (71.4 sq.m.) approx.



TOTAL FLOOR AREA : 1527 sq.ft. (141.9 sq.m.) approx.

Whilst every attempt has been made to ensure the accuracy of the floorplan contained here, measurements of doors, windows, rooms and any other items are approximate and no responsibility is taken for any error, omission or mis-statement. This plan is for illustrative purposes only and should be used as such by any prospective purchaser. The services, systems and appliances shown have not been tested and no guarantee as to their operability or efficiency can be given.  
Made with Metropix ©2026

**welcome to**

## **West Gate, Plumpton Green Lewes**

- Four generous double bedrooms, including a main suite with en-suite shower room
- Modern eco-package: Integrated solar panels, battery storage system, and a dedicated electric vehicle charging point
- Sun-trap rear patio, perfect for alfresco dining and summer entertaining
- double garage and a driveway providing ample off-road parking.
- A peaceful village setting with a strong community, yet within easy reach of local amenities and transport links.

Tenure: Freehold EPC Rating: D



Please note the marker reflects the postcode not the actual property

**check out more properties at [fox-and-sons.co.uk](https://fox-and-sons.co.uk)**



Property Ref:  
LEW106461 - 0002

1. MONEY LAUNDERING REGULATIONS Intending purchasers will be asked to produce identification documentation at a later stage and we would ask for your co-operation in order that there is no delay in agreeing the sale. 2. These particulars do not constitute part or all of an offer or contract. 3. The measurements indicated are supplied for guidance only and as such must be considered incorrect. Potential buyers are advised to recheck measurements before committing to any expense. 4. We have not tested any apparatus, equipment, fixtures or services and it is in the buyers interest to check the working condition of any appliances. 5. Where an EPC, or a Home Report (Scotland only) is held for this property, it is available for inspection at the branch by appointment. If you require a printed version of a Home Report, you will need to pay a reasonable production charge reflecting printing and other costs. 6. We are not able to offer an opinion either written or verbal on the content of these reports and this must be obtained from your legal representative. 7. Whilst we take care in preparing these reports, a buyer should ensure that his/her legal representative confirms as soon as possible all matters relating to title including the extent and boundaries of the property and other important matters before exchange of contracts.

Fox & Sons is a trading name of Sequence (UK) Limited which is registered in England and Wales under company number 4268443, Registered Office is Cumbria House, 16-20 Hockliffe Street, Leighton Buzzard, Bedfordshire, LU7 1GN. VAT Registration Number is 500 2481 05.



**01273 476378**



[Lewes@fox-and-sons.co.uk](mailto:Lewes@fox-and-sons.co.uk)



192 High Street, LEWES, East Sussex, BN7 2NS



**[fox-and-sons.co.uk](https://fox-and-sons.co.uk)**