



**Court Farm Close, Piddinghoe Newhaven BN9 9AR**

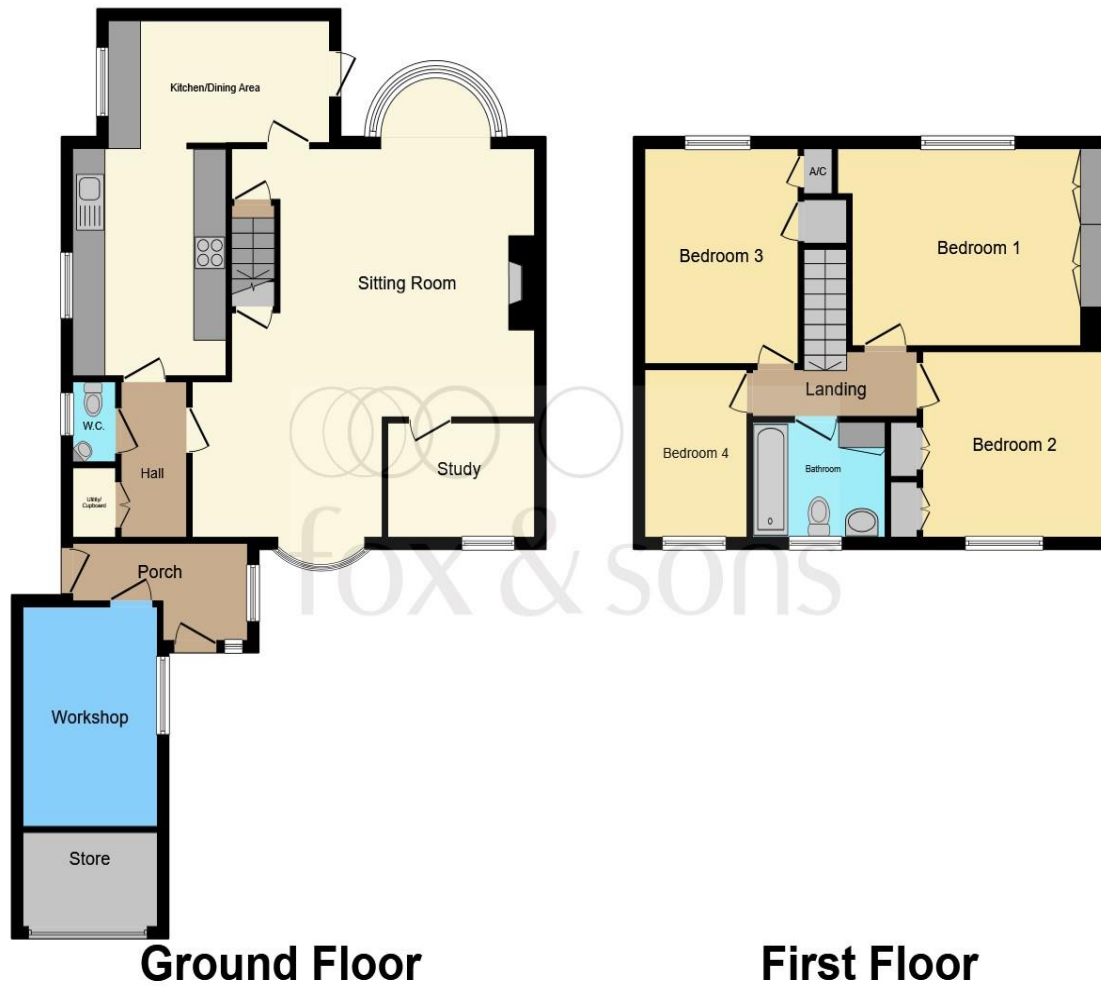


**welcome to**

## **Court Farm Close, Piddinghoe Newhaven**

**\*\*Ideal Family Home\*\*** Four-bedroom detached house located in a sought after village. Piddinghoe is situated approximately six miles south of the historic town of Lewes and only a few miles from the South Coast.





## Entrance Hall

## Cloakroom

## Lounge

20' 4" @ max into bay window x 23' 8" @ max ( 6.20m @ max into bay window x 7.21m @ max )

## Kitchen/Dining Room

14' 2" @ max x 20' @ max ( 4.32m @ max x 6.10m @ max )

## Bedroom One

11' 1" x 13' 11" @ max ( 3.38m x 4.24m @ max )

## Bedroom Two

10' 8" x 11' 2" ( 3.25m x 3.40m )

## Bedroom Three

12' 1" x 9' 5" ( 3.68m x 2.87m )

## Bedroom Four

9' 8" x 6' 2" ( 2.95m x 1.88m )

## Bathroom

## Workshop

## Store

Total floor area 145.8 m<sup>2</sup> (1,569 sq.ft.) approx

This floor plan is for illustrative purposes only. It is not drawn to scale. Any measurements, floor areas (including any total floor area), openings and orientation are approximate. No details are guaranteed, they cannot be relied upon for any purpose and they do not form part of any agreement. No liability is taken for any error, omission or misstatement. A party must rely upon its own inspection(s). Powered by [www.focalagent.com](http://www.focalagent.com)

welcome to

## Court Farm Close, Piddinghoe Newhaven

- Detached
- Four Bedrooms
- Log Burner in Lounge
- Workshop & Store
- Off Street Parking

Tenure: Freehold EPC Rating: D

offers in excess of

**£575,000**



Please note the marker reflects the postcode not the actual property

check out more properties at [fox-and-sons.co.uk](https://fox-and-sons.co.uk)



Property Ref:  
LEW106270 - 0002

1. MONEY LAUNDERING REGULATIONS Intending purchasers will be asked to produce identification documentation at a later stage and we would ask for your co-operation in order that there is no delay in agreeing the sale. 2. These particulars do not constitute part or all of an offer or contract. 3. The measurements indicated are supplied for guidance only and as such must be considered incorrect. Potential buyers are advised to recheck measurements before committing to any expense. 4. We have not tested any apparatus, equipment, fixtures or services and it is in the buyers interest to check the working condition of any appliances. 5. Where an EPC, or a Home Report (Scotland only) is held for this property, it is available for inspection at the branch by appointment. If you require a printed version of a Home Report, you will need to pay a reasonable production charge reflecting printing and other costs. 6. We are not able to offer an opinion either written or verbal on the content of these reports and this must be obtained from your legal representative. 7. Whilst we take care in preparing these reports, a buyer should ensure that his/her legal representative confirms as soon as possible all matters relating to title including the extent and boundaries of the property and other important matters before exchange of contracts.

Fox & Sons is a trading name of Sequence (UK) Limited which is registered in England and Wales under company number 4268443, Registered Office is Cumbria House, 16-20 Hockliffe Street, Leighton Buzzard, Bedfordshire, LU7 1GN. VAT Registration Number is 500 2481 05.



**01273 476378**



[Lewes@fox-and-sons.co.uk](mailto:Lewes@fox-and-sons.co.uk)



192 High Street, LEWES, East Sussex, BN7 2NS



**[fox-and-sons.co.uk](https://fox-and-sons.co.uk)**