



**Chaucer Walk, Eastbourne BN23 7QT**



**welcome to**

## **Chaucer Walk, Eastbourne**

Semi detached bungalow located in the popular Poets Estate being within close proximity to local shopping facilities and amenities and local transport routes and comprising one bedroom, bathroom, kitchen, lounge, conservatory, rear garden with pergola and a double garage!



### Entrance Hall

### Bathroom

### Kitchen

9' 1" x 8' 2" ( 2.77m x 2.49m )

### Lounge

13' 2" x 11' 5" ( 4.01m x 3.48m )

### Bedroom

12' 4" x 9' 8" ( 3.76m x 2.95m )

### Conservatory

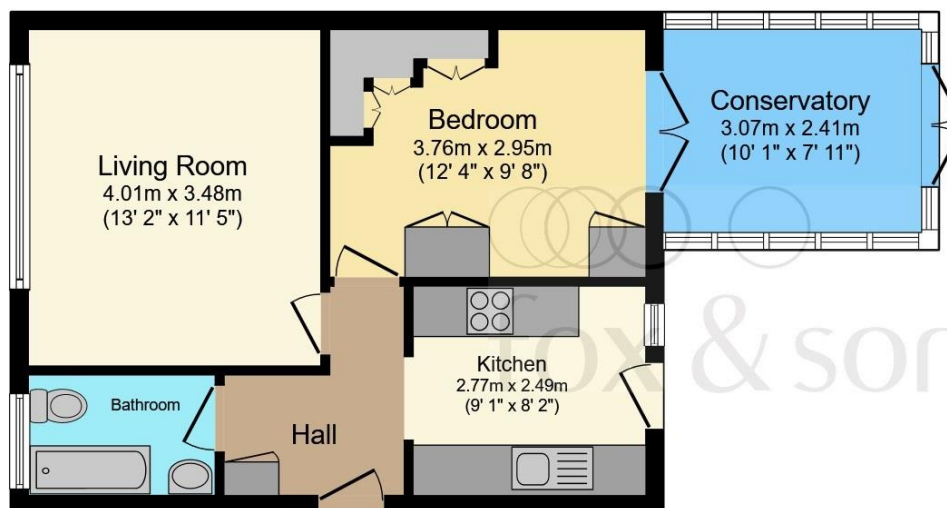
10' 1" x 7' 11" ( 3.07m x 2.41m )

### Outside

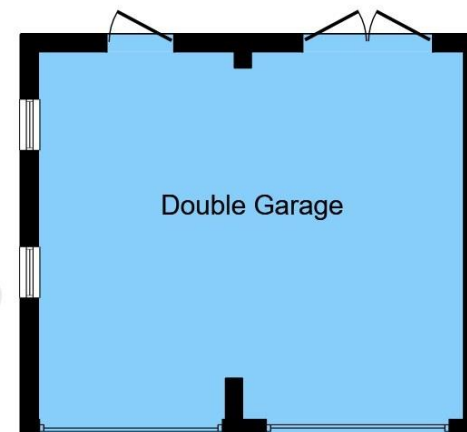
### Rear Garden

### Front Garden

### Double Garage



**Floor Plan**



**Double Garage**

Total floor area 70.6 m<sup>2</sup> (760 sq.ft.) approx

This floor plan is for illustrative purposes only. It is not drawn to scale. Any measurements, floor areas (including any total floor area), openings and orientation are approximate. No details are guaranteed, they cannot be relied upon for any purpose and they do not form part of any agreement. No liability is taken for any error, omission or misstatement. A party must rely upon its own inspection(s). Powered by [www.focalagent.com](http://www.focalagent.com)



**view this property online** [fox-and-sons.co.uk/Property/LGL110916](http://fox-and-sons.co.uk/Property/LGL110916)



welcome to

## Chaucer Walk, Eastbourne

- SEMI DETACHED BUNGALOW
- ONE BEDROOM WITH FITTED WARDROBES
- FITTED KITCHEN & BATHROOM
- SEPARATE LIVING ROOM & CONSERVATORY
- REAR GARDEN WITH PERGOLA
- DOUBLE GARAGE
- AIR CONDITIONING UNIT
- POPULAR POETS ESTATE

Tenure: Freehold EPC Rating: C

**£270,000**



Please note the marker reflects the postcode not the actual property

**view this property online** [fox-and-sons.co.uk/Property/LGL110916](https://fox-and-sons.co.uk/Property/LGL110916)



Property Ref:  
LGL110916 - 0007

1. MONEY LAUNDERING REGULATIONS Intending purchasers will be asked to produce identification documentation at a later stage and we would ask for your co-operation in order that there is no delay in agreeing the sale. 2. These particulars do not constitute part or all of an offer or contract. 3. The measurements indicated are supplied for guidance only and as such must be considered incorrect. Potential buyers are advised to recheck measurements before committing to any expense. 4. We have not tested any apparatus, equipment, fixtures or services and it is in the buyers interest to check the working condition of any appliances. 5. Where an EPC, or a Home Report (Scotland only) is held for this property, it is available for inspection at the branch by appointment. If you require a printed version of a Home Report, you will need to pay a reasonable production charge reflecting printing and other costs. 6. We are not able to offer an opinion either written or verbal on the content of these reports and this must be obtained from your legal representative. 7. Whilst we take care in preparing these reports, a buyer should ensure that his/her legal representative confirms as soon as possible all matters relating to title including the extent and boundaries of the property and other important matters before exchange of contracts.

Fox & Sons is a trading name of Sequence (UK) Limited which is registered in England and Wales under company number 4268443, Registered Office is Cumbria House, 16-20 Hockliffe Street, Leighton Buzzard, Bedfordshire, LU7 1GN. VAT Registration Number is 500 2481 05.

  
fox & sons



**01323 735561**



[langney@fox-and-sons.co.uk](mailto:langney@fox-and-sons.co.uk)



20 Winston Crescent, Langney, EASTBOURNE,  
East Sussex, BN23 6NL



**[fox-and-sons.co.uk](https://fox-and-sons.co.uk)**