



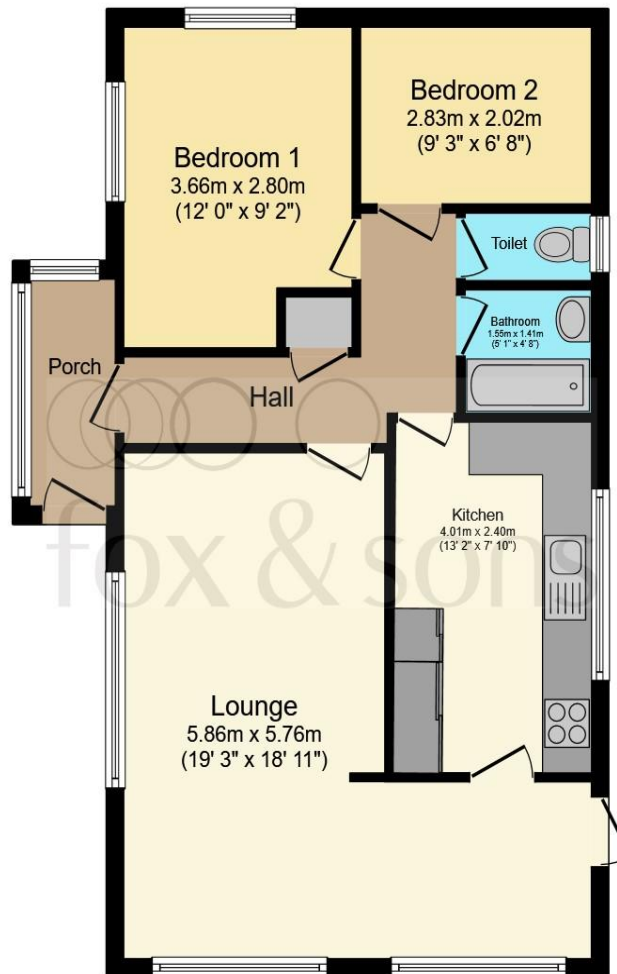
**Woodpecker Walk Turners Hill Park, Turners Hill Crawley RH10
4TY**

welcome to

Woodpecker Walk Turners Hill Park, Turners Hill Crawley

A two bedroom park home in Turners Hill Park with a lovely garden and surrounded by woodland and countryside. This home has two well proportioned bedrooms, large double aspect lounge with space for a dining area, fitted kitchen, bathroom and separate toilet. Age restriction: over 50's only.





Porch

Hall

Lounge

Irregular Shaped Room 19' 3" x 18' 11" (5.87m x 5.77m)

Bedroom 1

12' x 9' 2" (3.66m x 2.79m)

Bedroom 2

9' 3" x 6' 8" (2.82m x 2.03m)

Kitchen

13' 2" x 7' 10" (4.01m x 2.39m)

Bathroom

5' 1" x 4' 8" (1.55m x 1.42m)

Toilet

Total floor area 63.8 m² (687 sq.ft.) approx

This floor plan is for illustrative purposes only. It is not drawn to scale. Any measurements, floor areas (including any total floor area), openings and orientation are approximate. No details are guaranteed, they cannot be relied upon for any purpose and they do not form part of any agreement. No liability is taken for any error, omission or misstatement. A party must rely upon its own inspection(s). Powered by www.focalagent.com

welcome to

Woodpecker Walk Turners Hill Park, Turners Hill Crawley

- TWO BEDROOM PARK HOME IN RURAL SURROUNDINGS
- LARGE DOUBLE ASPECT LOUNGE/DINER
- LOVELY GARDEN
-
-

Tenure: EPC Rating: Exempt
Council Tax Band: A

We are currently awaiting Tenure details. For further information please contact the branch. Please note additional fees could be incurred for items such as leasehold packs.

offers in excess of



Please note the marker reflects the
postcode not the actual property

view this property online fox-and-sons.co.uk/Property/LCG106304



Property Ref:
LCG106304 - 0008

1. MONEY LAUNDERING REGULATIONS Intending purchasers will be asked to produce identification documentation at a later stage and we would ask for your co-operation in order that there is no delay in agreeing the sale. 2. These particulars do not constitute part or all of an offer or contract. 3. The measurements indicated are supplied for guidance only and as such must be considered incorrect. Potential buyers are advised to recheck measurements before committing to any expense. 4. We have not tested any apparatus, equipment, fixtures or services and it is in the buyers interest to check the working condition of any appliances. 5. Where an EPC, or a Home Report (Scotland only) is held for this property, it is available for inspection at the branch by appointment. If you require a printed version of a Home Report, you will need to pay a reasonable production charge reflecting printing and other costs. 6. We are not able to offer an opinion either written or verbal on the content of these reports and this must be obtained from your legal representative. 7. Whilst we take care in preparing these reports, a buyer should ensure that his/her legal representative confirms as soon as possible all matters relating to title including the extent and boundaries of the property and other important matters before exchange of contracts.

fox & sons



01903 766041



Lancing@fox-and-sons.co.uk



8/10 North Road, LANCING, West Sussex,
BN15 9AE



fox-and-sons.co.uk