



**Pavilion Close, Leicester LE2 7HS**

**welcome to**

**Pavilion Close, Leicester**

A two bedroom flat located in a popular area offering open plan lounge/kitchen, two bedrooms, one with en-suite and a family bathroom. The flat benefits from having an allocated parking space. Ideal FIRST TIME BUY or BUY TO LET





## Communal Entrance

## Open Plan Lounge / Kitchen

21' 2" x 13' 4" ( 6.45m x 4.06m )

## Bedroom One

11' x 9' 4" ( 3.35m x 2.84m )

## En-Suite

## Bedroom Two

10' x 9' 4" ( 3.05m x 2.84m )

## Bathroom

## Parking

This floor plan is for illustrative purposes only. It is not drawn to scale. Any measurements, floor areas (including any total floor area), openings and orientation are approximate. No details are guaranteed, they cannot be relied upon for any purpose and they do not form part of any agreement. No liability is taken for any error, omission or misstatement. A party must rely upon its own inspection(s). Powered by [www.focalagent.com](http://www.focalagent.com)



**welcome to**

## **Pavilion Close, Leicester**

- Flat
- Two Bedrooms
- En-Suite
- Allocated Parking
- Ideal First Time/Investment Buy

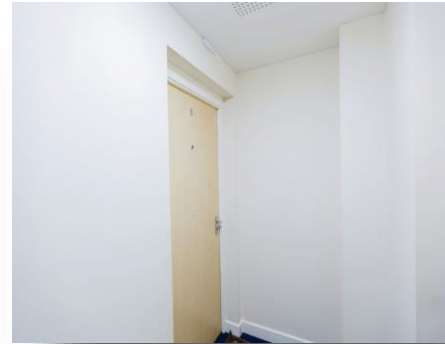
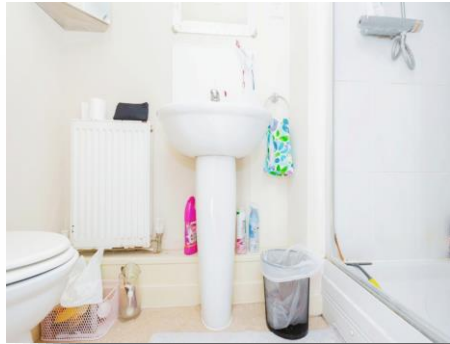
Tenure: Leasehold EPC Rating: B

This is a Leasehold property with details as follows; Term of Lease 125 years from 01 Jan 2010. Should you require further information please contact the branch. Please Note additional fees could be incurred for items such as Leasehold packs.

offers over

**£135,000**

Awaiting Photograph



**view this property online** [williamhbrown.co.uk/Property/LHS118402](http://williamhbrown.co.uk/Property/LHS118402)

Please note the marker reflects the  
postcode not the actual property



Property Ref:  
LHS118402 - 0014

1. MONEY LAUNDERING REGULATIONS Intending purchasers will be asked to produce identification documentation at a later stage and we would ask for your co-operation in order that there is no delay in agreeing the sale. 2. These particulars do not constitute part or all of an offer or contract. 3. The measurements indicated are supplied for guidance only and as such must be considered incorrect. Potential buyers are advised to recheck measurements before committing to any expense. 4. We have not tested any apparatus, equipment, fixtures or services and it is in the buyers interest to check the working condition of any appliances. 5. Where an EPC, or a Home Report (Scotland only) is held for this property, it is available for inspection at the branch by appointment. If you require a printed version of a Home Report, you will need to pay a reasonable production charge reflecting printing and other costs. 6. We are not able to offer an opinion either written or verbal on the content of these reports and this must be obtained from your legal representative. 7. Whilst we take care in preparing these reports, a buyer should ensure that his/her legal representative confirms as soon as possible all matters relating to title including the extent and boundaries of the property and other important matters before exchange of contracts.



**william h brown**



**0116 251 4131**



[Leicester@williamhbrown.co.uk](mailto:Leicester@williamhbrown.co.uk)



16-18 Halford Street, LEICESTER, Leicestershire,  
LE1 1JB



**[williamhbrown.co.uk](http://williamhbrown.co.uk)**