

THE Lower Acre

The Speedwell

Two-bedroom double-fronted house with a dual aspect to the kitchen/diner, living room and principal bedroom.



02380 688400
eastbrookehomes.co.uk



The Speedwell

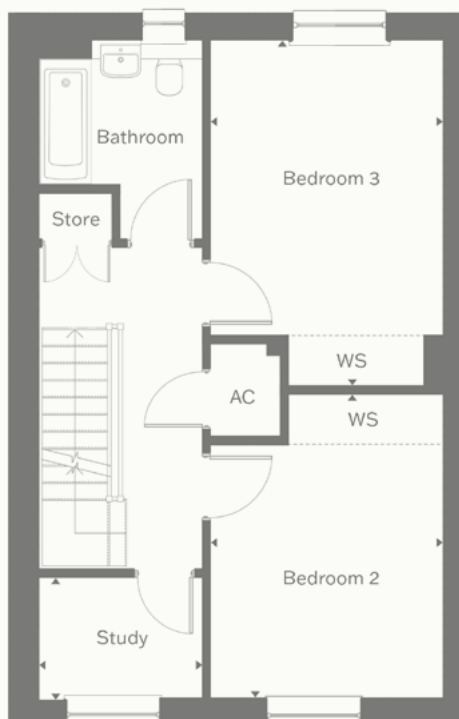
Total floor area 125.72m² (1,353ft²)

W = Wardrobe
WS = Suggested space for wardrobe
AC = Airing cupboard
▼ = Dimensions measured from these points



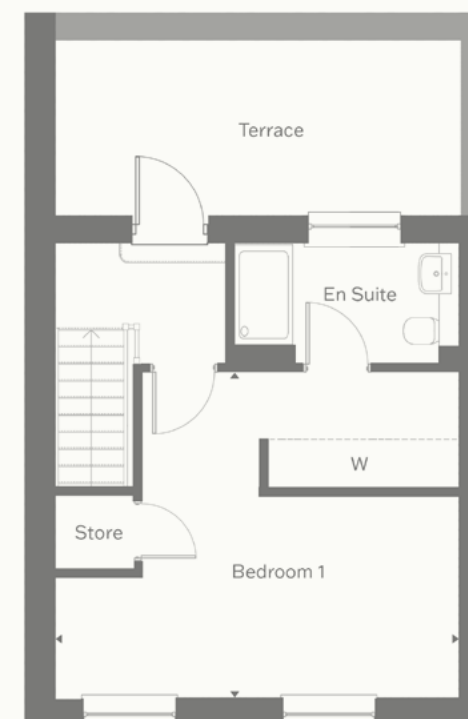
Ground floor

Kitchen/Dining	5.31m x 3.47m	17'5" x 11'5"
Living	4.26m x 3.00m	13'12" x 9'10"



First floor

Bedroom 2	4.06m x 3.00m	13'4" x 9'10"
Bedroom 3	4.59m x 3.00m	15'1" x 9'10"
Study	2.13m x 1.59m	6'12" x 5'3"



Second floor

Bedroom 1	5.31m x 4.36m	17'5" x 14'4"
-----------	---------------	---------------

Important information Consumer Protection from Unfair Trading Regulations 2008: These particulars have been prepared for prospective purchasers for guidance only. They are not part of an offer or contract. Whilst some descriptions are inevitably subjective and given in good faith, they should not be relied upon as statements or representations of fact. All measurements are taken from plans and must be treated as approximate. Plans are not to scale. Please note that any computer-generated images were commissioned before finalisation of plans and landscaping and as such, some variation in the finished construction and landscaping should be expected. Any landscaping shown on computer generated images indicate possible mature landscaping. The information contained within this literature is correct at the time of publication June 2025. Your safety: Building sites are potentially dangerous. The Law requires all visitors to be protected against injury. No one will be allowed to inspect these properties if they are still under construction, without the permission of the Site Manager or Sales Adviser. Visitors will be required to wear full PPE and on no account will persons under the age of 16 be permitted on site.

