



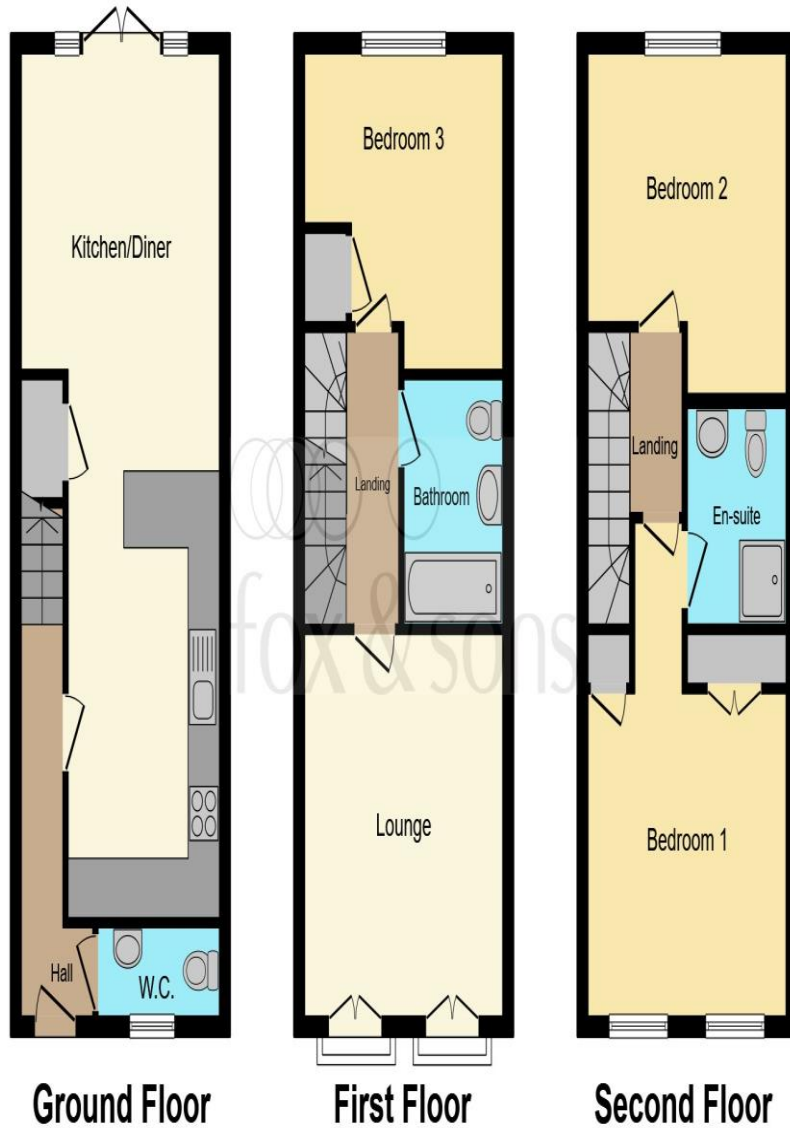
Pandora Close, Locks Heath, Southampton, SO31 6BS

welcome to

Pandora Close, Locks Heath Southampton

Tucked away in the desirable neighbourhood of Locks Heath, this three bedroom townhouse boasts ample space spread across three levels. Built in 2016, it comes with the peace of mind of NHBC coverage.





Entrance Hall

Cloakroom

Lounge

12' 8" x 12' 6" (3.86m x 3.81m)

Kitchen/Diner

27' 10" x 12' 6" (8.48m x 3.81m)

Landing

Bedroom 1

16' 7" x 12' 6" (5.05m x 3.81m)

En-Suite

Bedroom 2

11' 2" x 12' 5" (3.40m x 3.78m)

Bedroom 3

10' 5" x 12' 5" (3.17m x 3.78m)

Bathroom

Second Floor Landing

Front Garden

Rear Garden

This floor plan is for illustrative purposes only. It is not drawn to scale. Any measurements, floor areas (including any total floor area), openings and orientation are approximate. No details are guaranteed, they cannot be relied upon for any purpose and they do not form part of any agreement. No liability is taken for any error, omission or misstatement. A party must rely upon its own inspection(s). Powered by www.focalagent.com

welcome to

Pandora Close, Locks Heath Southampton

- VACANT AND CHAIN FREE
- READY NOW
- THREE DOUBLE BEDROOMS
- EN-SUITE TO MASTER
- TANDEM PARKING WITH CAR PORT

Tenure: Freehold EPC Rating: B

£370,000



Please note the marker reflects the postcode not the actual property

check out more properties at fox-and-sons.co.uk



Property Ref:
HEE105547 - 0002

1. MONEY LAUNDERING REGULATIONS Intending purchasers will be asked to produce identification documentation at a later stage and we would ask for your co-operation in order that there is no delay in agreeing the sale. 2. These particulars do not constitute part or all of an offer or contract. 3. The measurements indicated are supplied for guidance only and as such must be considered incorrect. Potential buyers are advised to recheck measurements before committing to any expense. 4. We have not tested any apparatus, equipment, fixtures or services and it is in the buyers interest to check the working condition of any appliances. 5. Where an EPC, or a Home Report (Scotland only) is held for this property, it is available for inspection at the branch by appointment. If you require a printed version of a Home Report, you will need to pay a reasonable production charge reflecting printing and other costs. 6. We are not able to offer an opinion either written or verbal on the content of these reports and this must be obtained from your legal representative. 7. Whilst we take care in preparing these reports, a buyer should ensure that his/her legal representative confirms as soon as possible all matters relating to title including the extent and boundaries of the property and other important matters before exchange of contracts.



01489 785269



HedgeEnd@fox-and-sons.co.uk



Stirling House, 5 St. Johns Road, Hedge End,
SOUTHAMPTON, Hampshire, SO30 4AA



fox-and-sons.co.uk