



Pretoria Road, Hedge End, Southampton, SO30 0BT

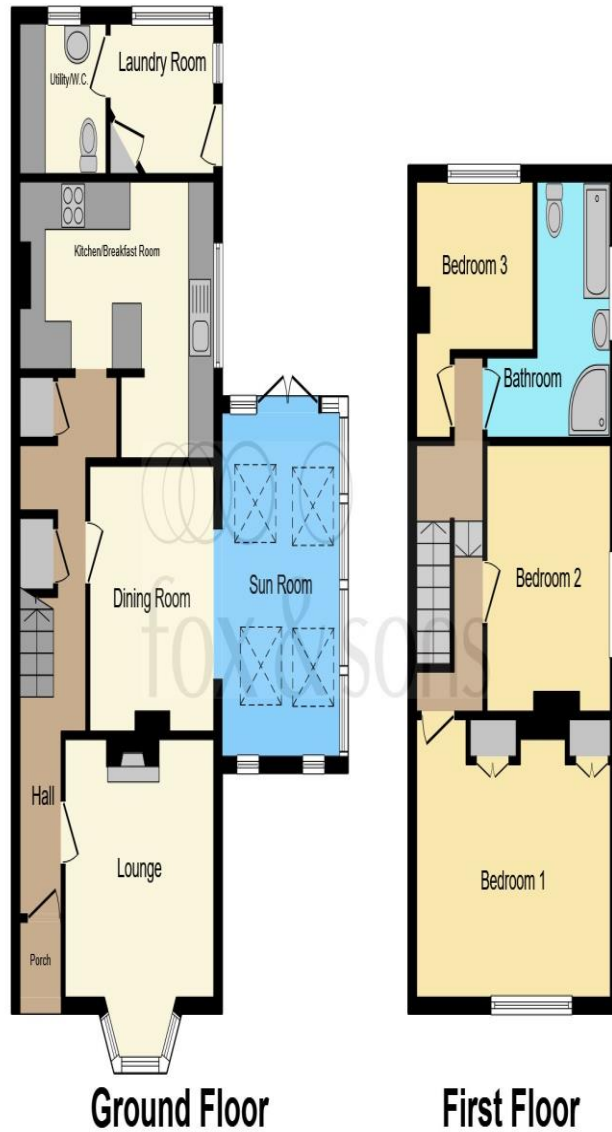


welcome to
Pretoria Road, Hedge End Southampton

Fox and Sons are glad to present this period home, boasting three bedrooms and ample extensions, comes with off-road parking for three cars and a sunny rear garden.

Call today to book your viewing
01489785269





Entrance Hall

Lounge

13' 7" Max x 11' 7" (4.14m Max x 3.53m)

Dining Room

1' 11" Max x 9' 8" (0.58m Max x 2.95m)

Sun Room

14' 2" x 9' 9" (4.32m x 2.97m)

Kitchen

11' 5" Max x 15' 2" Max (3.48m Max x 4.62m Max)

Laundry Room

6' 2" x 7' 4" (1.88m x 2.24m)

Utility Room - W/C

6' 2" x 6' 6" (1.88m x 1.98m)

Landing

Bedroom 1

11' 6" x 15' 2" (3.51m x 4.62m)

Bedroom 2

11' x 9' 9" (3.35m x 2.97m)

Bedroom 3

11' 11" Max x 9' 1" Max (3.63m Max x 2.77m Max)

Family Bathroom

Front Garden

Rear Garden

Summer House / Bar

9' 5" x 9' 8" (2.87m x 2.95m)

This floor plan is for illustrative purposes only. It is not drawn to scale. Any measurements, floor areas (including any total floor area), openings and orientation are approximate. No details are guaranteed, they cannot be relied upon for any purpose and they do not form part of any agreement. No liability is taken for any error, omission or misstatement. A party must rely upon its own inspection(s). Powered by www.focalagent.com

welcome to

Pretoria Road, Hedge End Southampton

- Three Bedroom Semi-Detached
- No onward chain
- Three Reception Rooms
- Off road parking
- Private rear garden

Tenure: Freehold EPC Rating: C

offers in the region of

£400,000



Please note the marker reflects the postcode not the actual property

view this property online fox-and-sons.co.uk/Property/HEE105511



Property Ref:
HEE105511 - 0005

1. MONEY LAUNDERING REGULATIONS Intending purchasers will be asked to produce identification documentation at a later stage and we would ask for your co-operation in order that there is no delay in agreeing the sale. 2. These particulars do not constitute part or all of an offer or contract. 3. The measurements indicated are supplied for guidance only and as such must be considered incorrect. Potential buyers are advised to recheck measurements before committing to any expense. 4. We have not tested any apparatus, equipment, fixtures or services and it is in the buyers interest to check the working condition of any appliances. 5. Where an EPC, or a Home Report (Scotland only) is held for this property, it is available for inspection at the branch by appointment. If you require a printed version of a Home Report, you will need to pay a reasonable production charge reflecting printing and other costs. 6. We are not able to offer an opinion either written or verbal on the content of these reports and this must be obtained from your legal representative. 7. Whilst we take care in preparing these reports, a buyer should ensure that his/her legal representative confirms as soon as possible all matters relating to title including the extent and boundaries of the property and other important matters before exchange of contracts.

Fox & Sons is a trading name of Sequence (UK) Limited which is registered in England and Wales under company number 4268443, Registered Office is Cumbria House, 16-20 Hockliffe Street, Leighton Buzzard, Bedfordshire, LU7 1GN. VAT Registration Number is 500 2481 05.


fox & sons



01489 785269



HedgeEnd@fox-and-sons.co.uk



Stirling House, 5 St. Johns Road, Hedge End,
SOUTHAMPTON, Hampshire, SO30 4AA



fox-and-sons.co.uk