



**Hanlye View Hanlye Lane,Cuckfield Haywards Heath RH17 5HN**

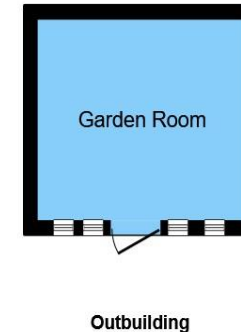
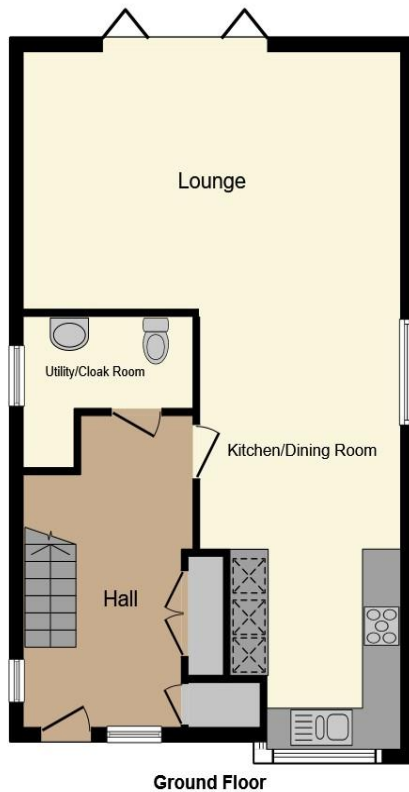


**welcome to**

## **Hanlye View Hanlye Lane, Cuckfield Haywards Heath**

**\*NEW VIEWING PLOT LAUNCH EVENT 17TH JANUARY\*** Introducing the FINAL unit of our exclusive 4 bedroom link-detached new home at Hanlye View with versatile garden room. This luxurious home boasts contemporary design, spacious interiors and high-end finishes throughout. **\*Tailor made incentives available\***





Total floor area 155.5 m<sup>2</sup> (1,674 sq.ft.) approx

This floor plan is for illustrative purposes only. It is not drawn to scale. Any measurements, floor areas (including any total floor area), openings and orientation are approximate. No details are guaranteed, they cannot be relied upon for any purpose and they do not form part of any agreement. No liability is taken for any error, omission or misstatement. A party must rely upon its own inspection(s). Powered by [www.focalagent.com](http://www.focalagent.com)

## Lounge

19' 5" at max x 12' 4" at max ( 5.92m at max x 3.76m at max )

## Dining Room / Kitchen

20' 9" at max x 10' 2" at max ( 6.32m at max x 3.10m at max )

## Cloakroom

## Garden Room

10' 10" x 9' 8" ( 3.30m x 2.95m )

## Principal Bedroom

16' 2" at max x 8' 8" at max ( 4.93m at max x 2.64m at max )

## En Suite

## Bedroom 2

13' 8" at max x 11' at max ( 4.17m at max x 3.35m at max )

## En Suite

## Bedroom 3

12' 2" at max x 11' 11" at max ( 3.71m at max x 3.63m at max )

## Bedroom 4

13' 8" at max x 8' 1" at max ( 4.17m at max x 2.46m at max )

## Bathroom

welcome to

## Hanlye View Hanlye Lane, Cuckfield Haywards Heath

- Finest Quality, Individual Design & Select Location-  
The Sigma Difference \*Tailor made incentives  
available\*
- Open plan Dining Room / Kitchen, lounge with bi-  
folding doors leading to the garden
- Contemporary designed handleless kitchen with  
integrated high-spec Bosch appliances and  
undercupboard lighting
- Four double bedrooms all with built in Hammond  
wardrobes
- Principal Bedroom and bedroom two both with  
ensuite with demister mirrors, Vado® brushed black



Please note the marker reflects the  
postcode not the actual property

**view this property online** [fox-and-sons.co.uk/Property/HHT110095](https://fox-and-sons.co.uk/Property/HHT110095)



Property Ref:  
HHT110095 - 0004

1. MONEY LAUNDERING REGULATIONS Intending purchasers will be asked to produce identification documentation at a later stage and we would ask for your co-operation in order that there is no delay in agreeing the sale. 2. These particulars do not constitute part or all of an offer or contract. 3. The measurements indicated are supplied for guidance only and as such must be considered incorrect. Potential buyers are advised to recheck measurements before committing to any expense. 4. We have not tested any apparatus, equipment, fixtures or services and it is in the buyers interest to check the working condition of any appliances. 5. Where an EPC, or a Home Report (Scotland only) is held for this property, it is available for inspection at the branch by appointment. If you require a printed version of a Home Report, you will need to pay a reasonable production charge reflecting printing and other costs. 6. We are not able to offer an opinion either written or verbal on the content of these reports and this must be obtained from your legal representative. 7. Whilst we take care in preparing these reports, a buyer should ensure that his/her legal representative confirms as soon as possible all matters relating to title including the extent and boundaries of the property and other important matters before exchange of contracts.

Fox & Sons is a trading name of Sequence (UK) Limited which is registered in England and Wales under company number 4268443, Registered Office is Cumbria House, 16-20 Hockliffe Street, Leighton Buzzard, Bedfordshire, LU7 1GN. VAT Registration Number is 500 2481 05.

  
fox & sons



**01444 450105**



[HaywardsHeath@fox-and-sons.co.uk](mailto:HaywardsHeath@fox-and-sons.co.uk)



115 South Road, HAYWARDS HEATH, West  
Sussex, RH16 4LR



**[fox-and-sons.co.uk](https://fox-and-sons.co.uk)**