



  
Sigma Homes  
LOCATION + QUALITY + DESIGN

**Spring Bank, Haywards Heath RH16 4LF**

  
fox & sons



**welcome to**

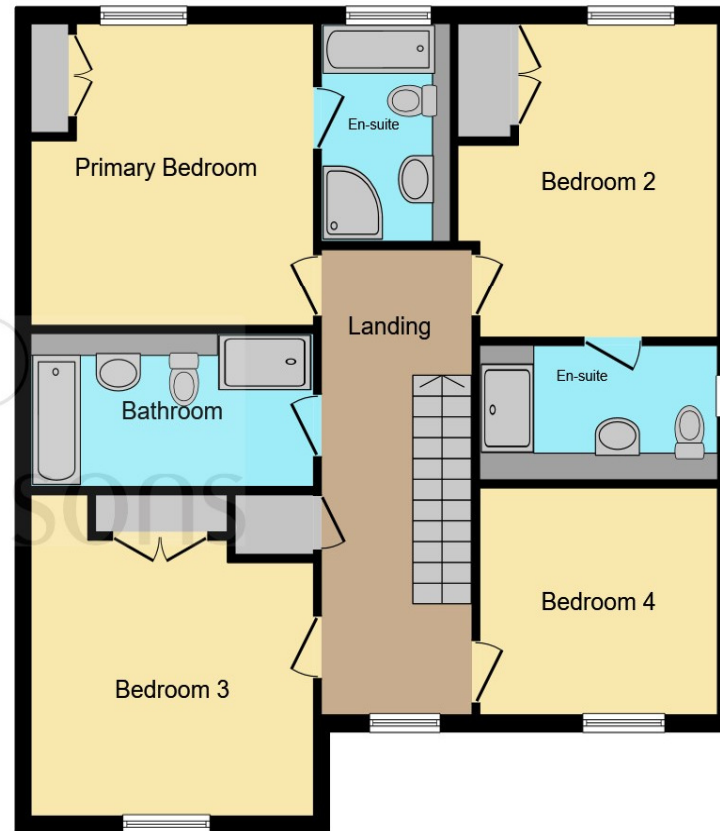
## **Spring Bank, Haywards Heath**

Fox and sons welcomes this stunning four bedroom detached house with spacious kitchen & dining area, utility area & dedicated study room. Upstairs both the master bedroom and 2nd bedroom have their own ensuites & the home also include a double garage! **\*STAMP DUTY INCLUDED\***





**Ground Floor**



**First Floor**

Total floor area 175.0 m<sup>2</sup> (1,883 sq.ft.) approx

This floor plan is for illustrative purposes only. It is not drawn to scale. Any measurements, floor areas (including any total floor area), openings and orientation are approximate. No details are guaranteed, they cannot be relied upon for any purpose and they do not form part of any agreement. No liability is taken for any error, omission or misstatement. A party must rely upon its own inspection(s). Powered by [www.focalagent.com](http://www.focalagent.com)

### **Dining Room / Kitchen**

30' 9" at max x 13' 3" at max ( 9.37m at max x 4.04m at max )

### **Lounge**

15' 1" at max x 12' 8" at max ( 4.60m at max x 3.86m at max )

### **Study**

9' 6" at max x 9' 4" at max ( 2.90m at max x 2.84m at max )

### **Cloakroom**

### **Utility**

### **Principal Bedroom**

13' 3" at max x 12' 8" at max ( 4.04m at max x 3.86m at max )

### **En Suite**

### **Bedroom 2**

13' 3" at max x 11' 1" at max ( 4.04m at max x 3.38m at max )

### **En Suite**

### **Bedroom 3**

12' 8" at max x 10' 7" at max ( 3.86m at max x 3.23m at max )

### **Bedroom 4**

9' 6" at max x 9' 3" at max ( 2.90m at max x 2.82m at max )

### **Family Bathroom**



welcome to

## Spring Bank, Haywards Heath

- STUNNING FOUR BEDROOM DETACHED HOUSE
- MODERN, LOCALLY DESIGNED KITCHEN WITH STYLISH SHAKER UNITS & INTEGRATED HIGH SPEC BOSCH APPLIANCES
- ENERGY EFFICIENT AIR SOURCE HEAT PUMPS PROVIDING UNDERFLOOR HEATING TO THE GROUND FLOOR
- 4 DOUBLE BEDROOM ALL WITH BUILT IN HAMMOND SHAKER STYLE WARDROBES
- 2 MILES TO HAYWARDS HEATH TOWN CENTRE & DIRECT TRAIN ROUTES TO LONDON IN LESS THAN 1 HOUR
- FAMILY BATHROOM COMPLETE WITH BATH & SHOWER, PREMIUM SANITARYWARE, PRESSURISED SHOWER, DEMISTER MIRRORS, HEATED TOWEL RAIL AND CHROME FITTINGS
- GARAGE WITH DOUBLE POWER SOCKET AND ELECTRIC CAR CHARGING POINT (IP65 RATED)
- UNIQUE, SMALL DEVELOPMENT OF ONLY 20 CAREFULLY CRAFTED HOMES

Tenure: Freehold EPC Rating: Exempt

offers in excess of

**£900,000**



Please note the marker reflects the postcode not the actual property

**view this property online** [fox-and-sons.co.uk/Property/HHT109997](https://fox-and-sons.co.uk/Property/HHT109997)



Property Ref:  
HHT109997 - 0002

1. MONEY LAUNDERING REGULATIONS Intending purchasers will be asked to produce identification documentation at a later stage and we would ask for your co-operation in order that there is no delay in agreeing the sale. 2. These particulars do not constitute part or all of an offer or contract. 3. The measurements indicated are supplied for guidance only and as such must be considered incorrect. Potential buyers are advised to recheck measurements before committing to any expense. 4. We have not tested any apparatus, equipment, fixtures or services and it is in the buyers interest to check the working condition of any appliances. 5. Where an EPC, or a Home Report (Scotland only) is held for this property, it is available for inspection at the branch by appointment. If you require a printed version of a Home Report, you will need to pay a reasonable production charge reflecting printing and other costs. 6. We are not able to offer an opinion either written or verbal on the content of these reports and this must be obtained from your legal representative. 7. Whilst we take care in preparing these reports, a buyer should ensure that his/her legal representative confirms as soon as possible all matters relating to title including the extent and boundaries of the property and other important matters before exchange of contracts.

Fox & Sons is a trading name of Sequence (UK) Limited which is registered in England and Wales under company number 4268443, Registered Office is Cumbria House, 16-20 Hockliffe Street, Leighton Buzzard, Bedfordshire, LU7 1GN. VAT Registration Number is 500 2481 05.

  
fox & sons



**01444 450105**



[HaywardsHeath@fox-and-sons.co.uk](mailto:HaywardsHeath@fox-and-sons.co.uk)



115 South Road, HAYWARDS HEATH, West  
Sussex, RH16 4LR



**[fox-and-sons.co.uk](https://fox-and-sons.co.uk)**